

**INSTRUMENT APPROACH CHART (IAC)**

**RIO DE JANEIRO / Galeão - Antônio Carlos Jobim, INTL (SBGL)**

**AD ELEV: 28'**

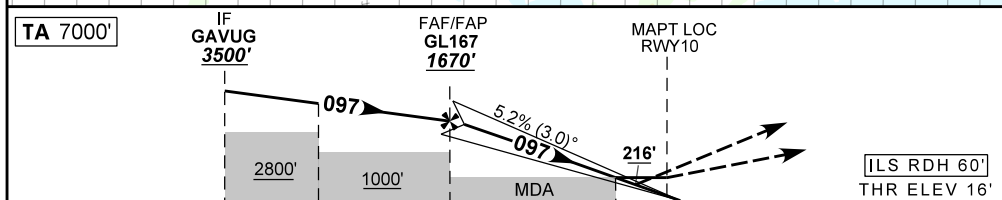
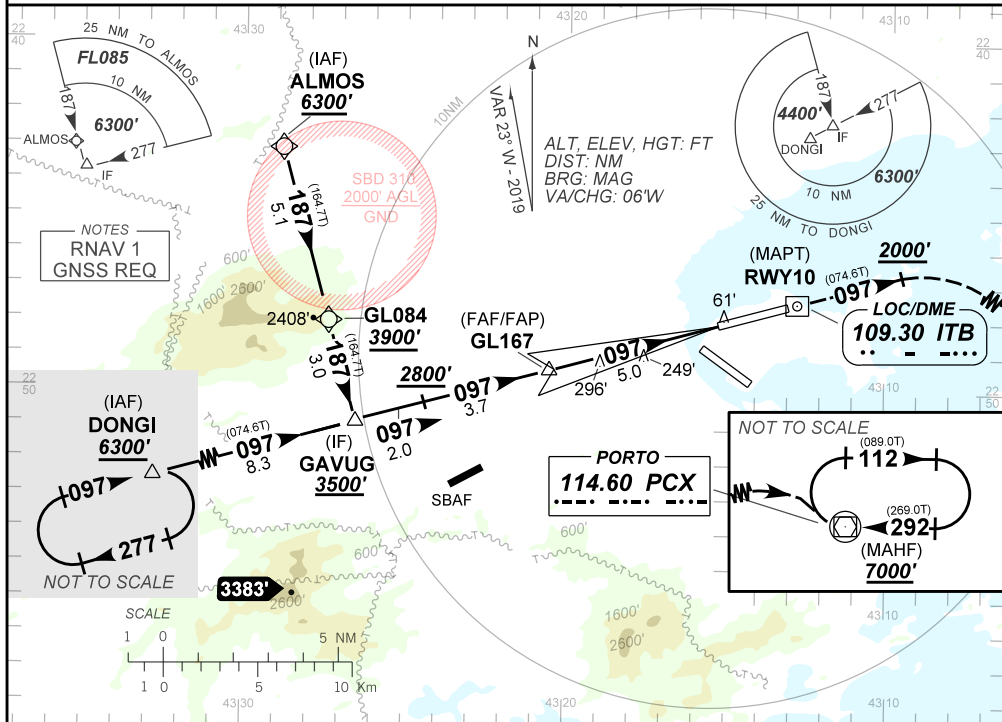
**ILS X or LOC X RWY 10**

D-ATIS <b>127.60</b>	APP RIO <b>124.95 125.95 129.80 134.95 121.50</b>	TWR GALEÃO <b>118.00 118.20 121.50</b>	GNDC GALEÃO <b>121.65 128.35</b>
-------------------------	--	---	-------------------------------------

LOC ITB <b>109.30 MHz</b>	FINAL CRS <b>097°</b>	FAF: <b>1670'</b>	CAT I DA / (OCH): <b>216' / (200')</b>	LOC only: MDA / (OCH): <b>550' / (540')</b>
------------------------------	--------------------------	----------------------	---	--

APCH Perdida: 1) Subir para **7000'** no rumo **097°**. Após **2000'**, curvar à DIREITA para espera no VOR PCX.  
Missed APCH: 1) Climb to **7000'** course **097°**. After **2000'** turn RIGHT for holding over VOR PCX.

RMK: NIL.



TO THR 10 (NM)	10.7	8.7	5.0	2.5	1.5	0.0
TO ITB (DME)	13.1	11.1	7.4	4.9	3.9	2.4

	GL167	4.0	3.0	2.0	1.5	RWY10	KT	090	110	130	150	170	190
	1670	1350	1032	713	550	ALT	FPM	500	600	700	800	900	1000
	1654	1334	1016	697	540	(HGT)	FAF-MAPT	NA					

STRAIGHT-IN	CAT	A	B	C	D	E
	DA / (OCH)	216' / (200')				
CAT I	ALS/NO ALS/ RVR ALS (m)	800 / 1200 / 550				
	MDA / (OCH)	550' / (540')				
LOC	ALS/NO ALS/RVR ALS (m)	750 / 1600 / 700	800 / 1600 / 700	1700 / 2400 / 1550		
	MDA / (OCH)	NA				
CIRCLING	MDA / (OCH)	NA				
	VIS (m)	NA				

CHANGES: FREQ.