

INSTRUMENT APPROACH  
CHART (IAC)

**CARTA DE USO EXCLUSIVO  
ACFT MILITARES**

NATAL / Augusto Severo, MIL (SBNT)

**PAR RWY 34R**

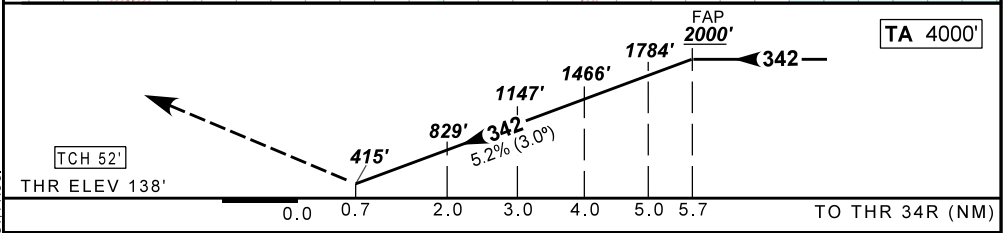
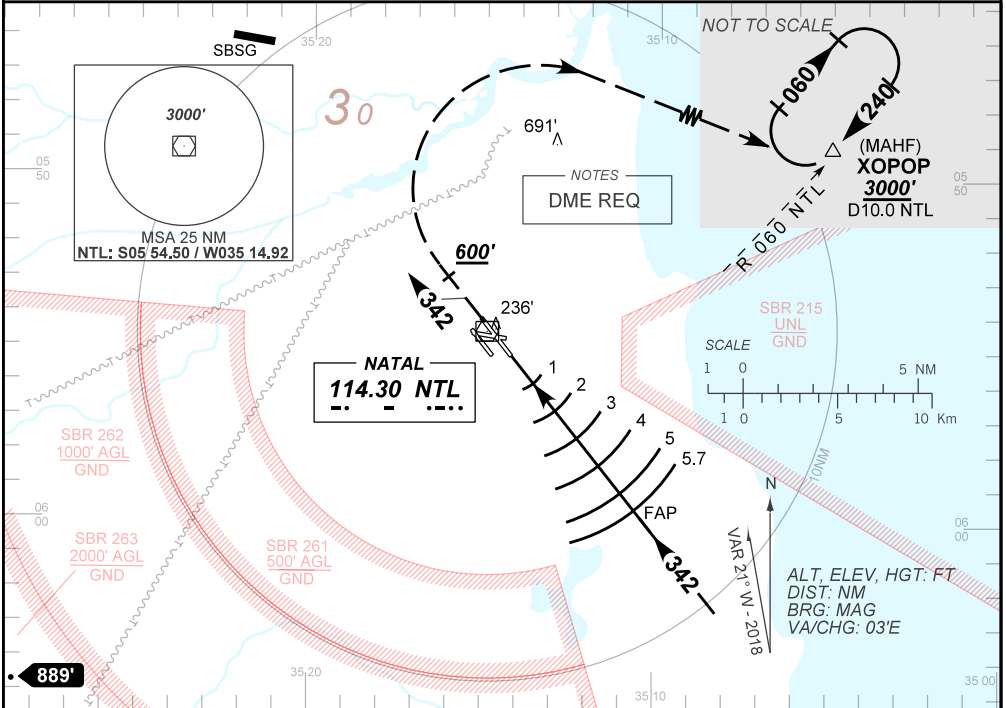
**AD ELEV: 171'**

D-ATIS <b>132.65</b>	APP NATAL <b>119.30 119.65 120.65 129.80 121.50</b>	PAR NATAL <b>128.875 132.40 348.65 359.00</b>	TWR NATAL <b>118.70 122.80 121.50</b>	GNDC NATAL <b>121.90</b>
<b>N/A</b>	FINAL CRS <b>342°</b>	FAP <b>2000'</b>	PAR DA / (OCH): <b>415' / (277')</b>	<b>N/A</b>

APCH Perdida: Subir para **3000'**. Após **600'**, curvar à DIREITA direto XOPOP para espera.

Missed APCH: Climb to **3000'**. After **600'**, turn RIGHT direct to XOPOP for holding.

RMK: NIL.



RW34R	NIL	KT	090	110	130	150	170	190
ALT	NIL	FPM	500	600	700	800	900	1000
(HGT)	NIL	FAF-MAPT	NA					

STRAIGHT-IN	CAT	A	B	C	D	E
PAR	DA / (OCH)	415' / (277')				
	ALS/NO ALS/ RVR ALS (m)	NIL / 1300 / NIL				
CIRCLING	MDA / (OCH)	NA				
	VIS (m)	NA				

CHANGES: DA, EAC, MA, FREQ, LAYOUT, PROC.

AIRAC AMDT 20/18 08 NOV 18

DEPARTAMENTO DE CONTROLE DO ESPAÇO AÉREO  
**CARTA DE USO EXCLUSIVO ACFT MILITARES**

SBNT\_IAC\_01M 1/1  
IAC PAR RWY 34R