

**INSTRUMENT APPROACH
CHART (IAC)**

VITÓRIA / Eurico de Aguiar Salles (SBVT)

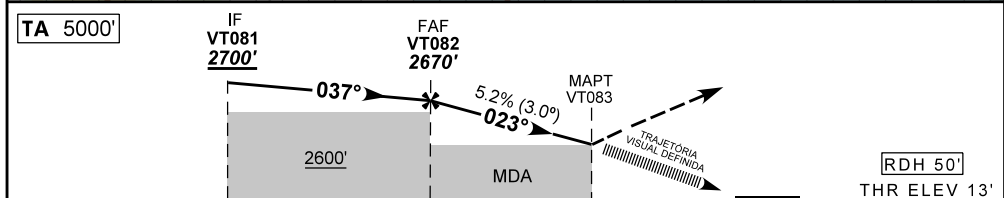
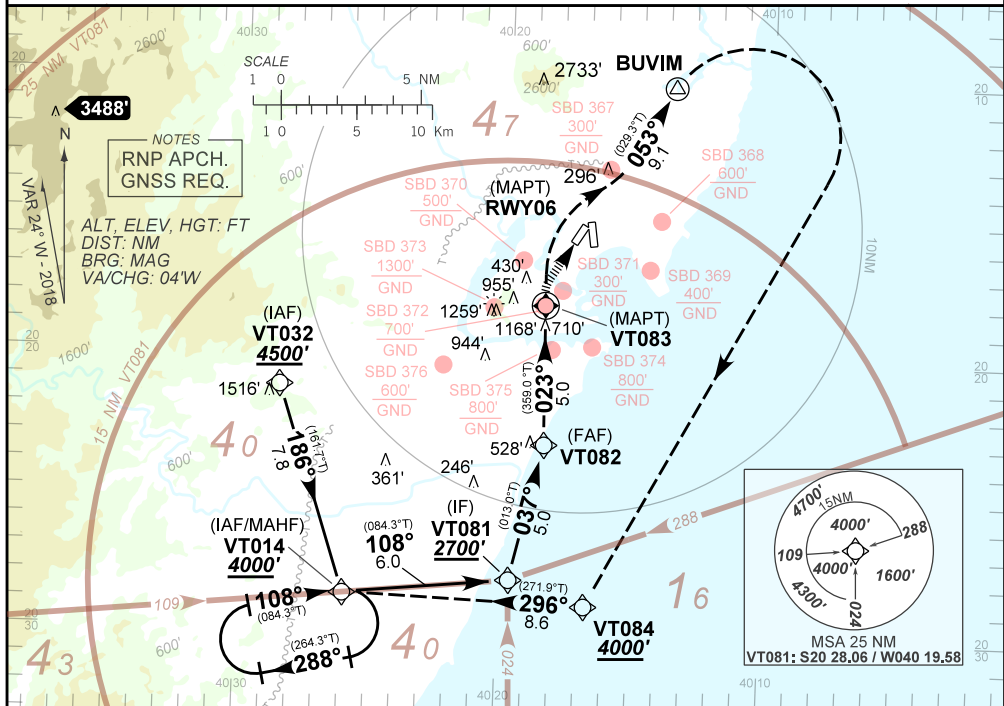
AD ELEV: 34'

RNAV(GNSS) B RWY 06

ATIS 127.575	APP VITÓRIA 119.85 121.50	TWR VITÓRIA 118.10 121.50	GNDC VITÓRIA 121.95
N/A	FINAL CRS 023°	FAF 2670'	LNAV/VNAV DA / (OCH): N/A
			LNAV MDA / (OCH): N/A

APCH Perdida: 1) Subir para **4000'**. Curvar à DIREITA rumo **053** para BUVIM. Curvar à DIREITA para VT084. Após, curvar à DIREITA, rumo **296** para VT014 para espera.
Missed APCH: 1) Climb to **4000'**. Turn RIGHT course **053** up to BUVIM. Turn RIGHT up to VT084. Then, turn RIGHT course **296** up to VT014 for holding.

RMK: NIL.



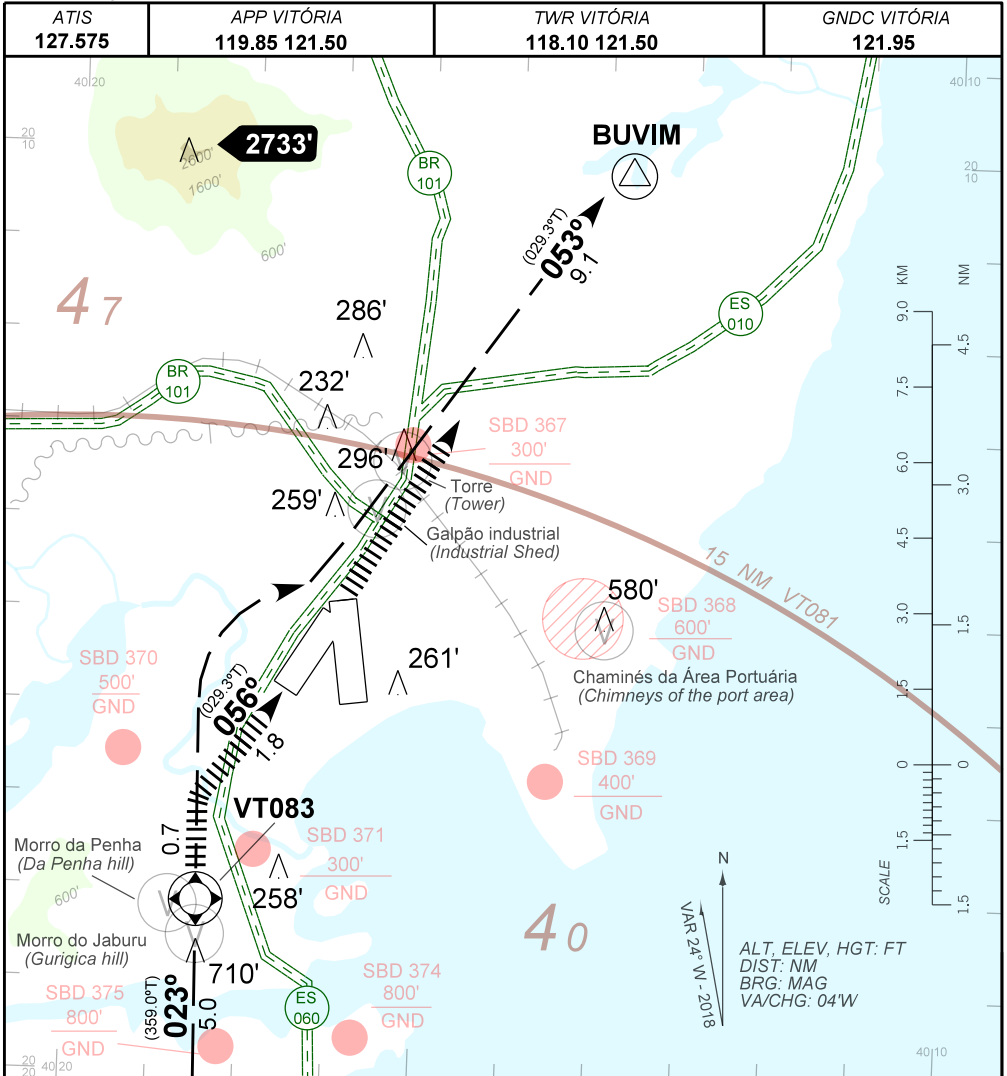
TO THR 06 (NM) 10.0 5.0 2.5 0.0

VT082	4.0	3.0	2.0	1.0	VT083	RWY06	KT	090	110	130	150	170	190
2700	2384	2065	1747	1429	1100	ALT	FPM	600	700	850	NA	NA	NA
2690	2374	2055	1737	1419	1090	(HGT)	FAF-MAPT	NA					

STRAIGHT-IN	CAT	A	B	C	D	E
	MDA / (OCH)			NA		
LNAV	ALS/NO ALS/ RVR ALS (m)			NA		
	DA / (OCH)			NA		
LNAV/VNAV	ALS/NO ALS/ RVR ALS (m)			NA		
	MDA / (OCH)	1100' / (1090')				NA
CIRCLING	MS (m)	NIL / 2000 / NIL	NIL / 2400 / NIL	NIL / 4900 / NIL		

CHANGES: NEW CHART

AD ELEV: 34'



**TRAJETÓRIA VISUAL DEFINIDA RWY 06
VISUAL PRESCRIBED TRACK RWY 06**

1) O piloto deverá estar em contato visual e prover sua própria separação com as referências visuais:

Torre (S20 13.34, W40 16.27), Chaminés da Área Portuária (S20 15.10, W40 13.91).

The pilot should have visual contact and provide his own separation with the visual references:

Tower (S20 13.34, W40 16.27), Chimneys of the port area (S20 15.10, W40 13.91).

2) Em caso de arremetida durante a manobra para circular: Subir para 4000' e voar direto BUVIM para interceptar a trajetória de aproximação perdida publicada.

In case of go around during the visual manoeuvring: Climbing to 4000' and fly direct BUVIM to intercept the trajectory of the missed approach published.

CHANGES: NEW CHART