

INSTRUMENT APPROACH CHART (IAC)

RIO DE JANEIRO / Galeão - Antônio Carlos Jobim, INTL (SBGL)

NDB RWY 10

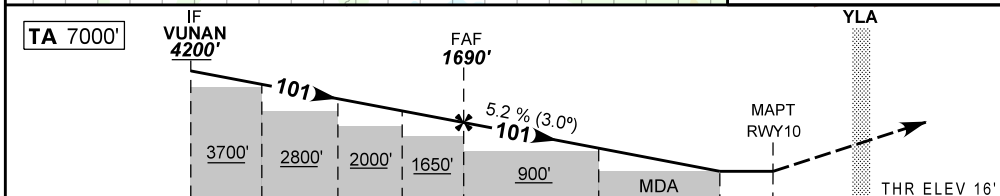
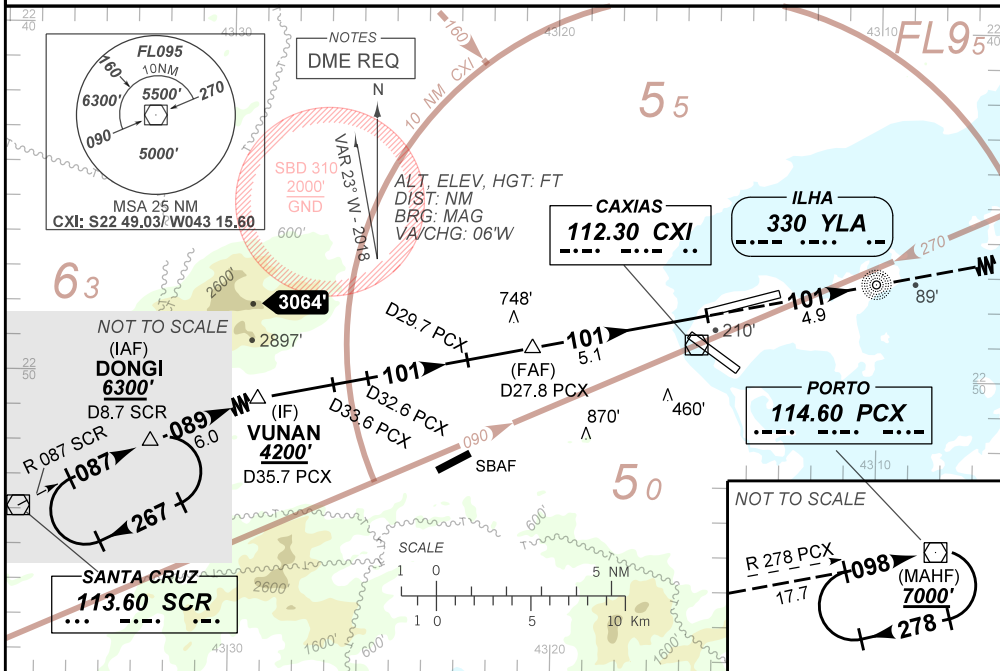
AD ELEV: 28'

D-ATIS 127.60	APP RIO 126.20 133.30 134.40 121.25 129.80 125.95 128.90 119.35 121.50	TWR GALEÃO 118.00 118.20 121.50	GND C GALEÃO 128.35 121.65
NDB YLA 330 KHZ	FINAL CRS 101°	FAF 1690'	NA
		NDB MDA / (OCH): 620' (610')	

APCH Perdida: 1) Subir para **7000'**, gradiente MNM 5%. Manter QDM **101°** YLA. Após NDB YLA, RDL **278'** PCX para espera no VOR PCX.

Missed APCH: 1) Climb to **7000'**, MNM gradient 5%. Maintain **101°** YLA QDM. After YLA NDB, **278'** PCX RDL for holding at PCX VOR.

RMK: NIL.



TO THR 10 (NM)	13.1	10.9	9.9	7.0	5.1	3.1	1.7	0.0
TO PCX (DME)	35.7	33.6	32.6	29.7	27.8	25.8	24.4	22.7

	FAF	4.0	3.0	2.0	1.7	RWY10		KT	090	110	130	150	170	190
	1690	1340	1021	702	620	ALT		FPM	500	600	700	800	900	1000
	1674	1324	1005	686	610	(HGT)		FAF-MAPT	3:23	2:47	2:21	2:02	1:48	1:37

STRAIGHT-IN	CAT	A	B	C	D	E
NDB	MDA / (OCH)	620' / (610')				
	ALS/NO ALS/ RVR ALS (m)	1200 / 1600 / NIL			2100 / 2800 / NIL	
CIRCLING	MDA / (OCH)	NA				
	VIS (m)					

CHANGES: PROC.