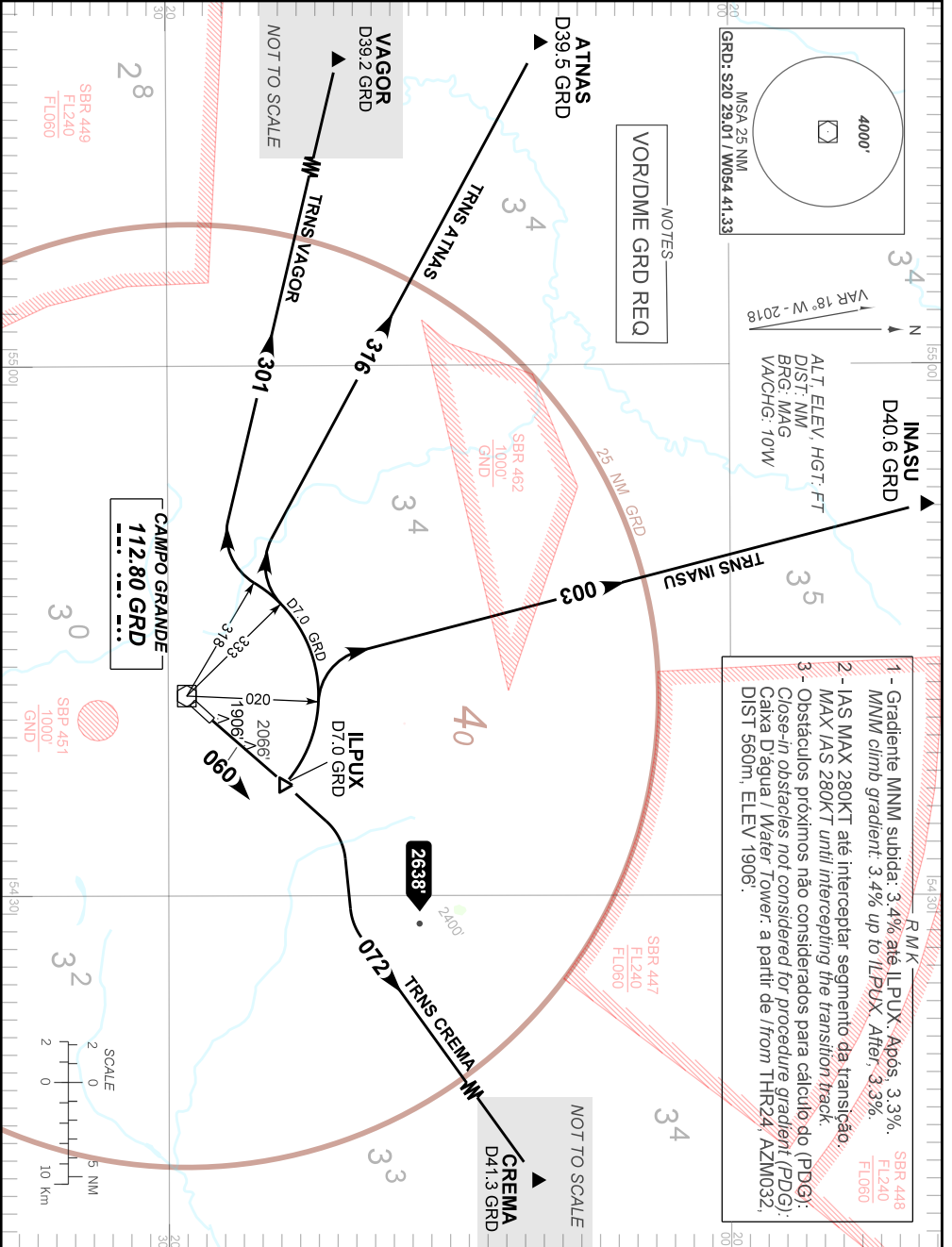


STANDARD DEPARTURE CHART  
INSTRUMENT(SID)

CAMPO GRANDE / Campo Grande, INTL (SBCG)  
RWY 06  
ILPUX 1A

AD ELEV: 1834'

TA 5000'	TWR CAMPO GRANDE 118.10 121.50	APP CAMPO GRANDE 119.35 119.65 120.20 121.00 121.50	ACC CURITIBA 123.70 124.85 128.15 129.25 121.50
----------	-----------------------------------	---	---



**R/M/K**

1 - Gradiente MNM subida: 3.4% até ILPUX. Após 3.3% MNM climb gradient: 3.4% up to ILPUX. After 3.3% SBR 448 FL240 FLO60

2 - IAS MAX 280KT até interceptar segmento da transição. MAX IAS 280KT until intercepting the transition track.

3 - Obstáculos próximos não considerados para cálculo do (PDG): Close-in obstacles not considered for procedure gradient (PDG): Caixa D'água / Water Tower: a partir de 170m THR24, AZM032, DIST 560m, ELEV 1906.