

**INSTRUMENT APPROACH  
CHART (IAC)**

**SÃO PEDRO DA ALDEIA / São Pedro da Aldeia, MIL (SBES)**

**RNAV(GNSS) Z RWY 25**

**AD ELEV: 61'**

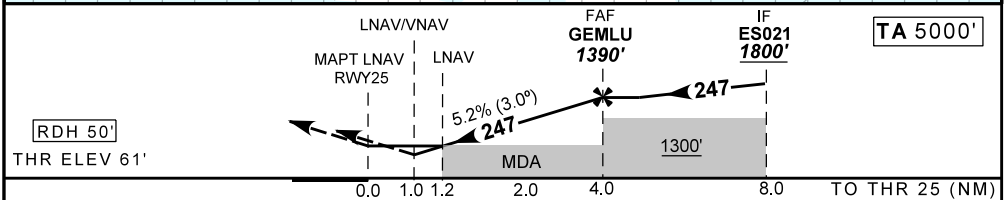
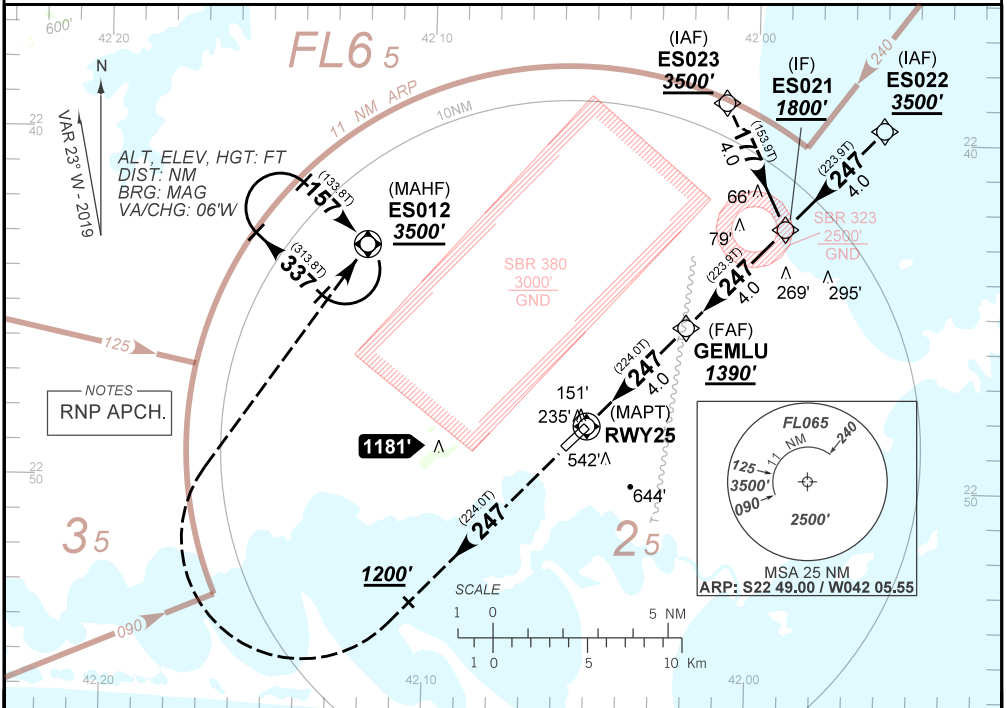
|                    |                                    |   |  |
|--------------------|------------------------------------|---|--|
| ATIS<br><b>NIL</b> | APP ALDEIA<br><b>119.45 120.30</b> | TWR ALDEIA<br><b>118.30 122.80 (MIL) 121.50</b> | GNDC ALDEIA<br><b>121.90</b>                   |
| <b>N/A</b>         | FINAL CRS<br><b>247°</b>           | FAF<br><b>1390'</b>                             | LNNAV/VNAV<br>DA / (OCH): <b>454' / (393')</b> |
|                    |                                    |   | LNNAV<br>MDA / (OCH): <b>500' / (440')</b>     |

APCH Perdida: Subir para **3500'**. Manter o rumo **247** até **1200'** após curvar à DIREITA direto ES012 para espera.

Missed APCH: Climb to **3500'**. Maintain course **247** until **1200'** after turn RIGHT direct to ES012 for holding.

RMK: 1) Para sistemas não compensados Baro-VNAV, LNAV/VNAV NÃO AUTORIZADO abaixo de 0°C ou acima de 48°C.

1) For uncompensated systems Baro-VNAV, LNAV/VNAV NOT AUTHORIZED below 0°C or above 48°C.



|       |     |     |      |       |  |          |     |     |     |     |     |      |
|-------|-----|-----|------|-------|--|----------|-----|-----|-----|-----|-----|------|
| RWY25 | 1.2 | 2.0 | 3.0  | GEMLU |  | KT       | 090 | 110 | 130 | 150 | 170 | 190  |
| ALT   | 500 | 748 | 1066 | 1390  |  | FPM      | 500 | 600 | 700 | 800 | 900 | 1000 |
| (HGT) | 440 | 687 | 1005 | 1329  |  | FAF-MAPT |     |     |     | NA  |     |      |

|             |                         |                      |   |   |   |    |
|-------------|-------------------------|----------------------|---|---|---|----|
| STRAIGHT-IN | CAT                     | A                    | B | C | D | E  |
| LNNAV/VNAV  | DA / (OCH)              | <b>454' / (393')</b> |   |   |   | NA |
|             | ALS/NO ALS/ RVR ALS (m) | NIL / 1600 / NIL     |   |   |   |    |
| LNNAV       | MDA / (OCH)             | <b>500' / (440')</b> |   |   |   |    |
|             | ALS/NO ALS/RVR ALS (m)  | NIL / 1600 / NIL     |   |   |   |    |
| CIRCLING    | MDA / (OCH)             | NA                   |   |   |   |    |
|             | VIS (m)                 | NA                   |   |   |   |    |

CHANGES: NEW CHART.