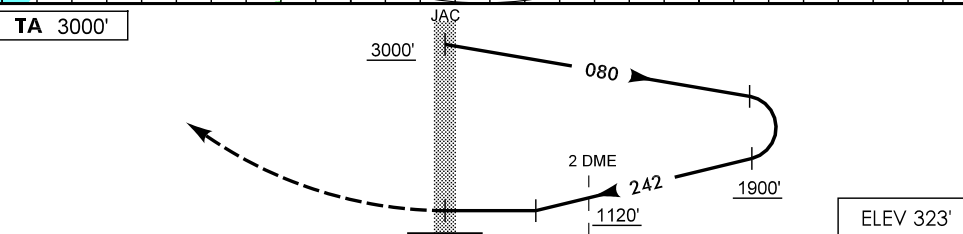
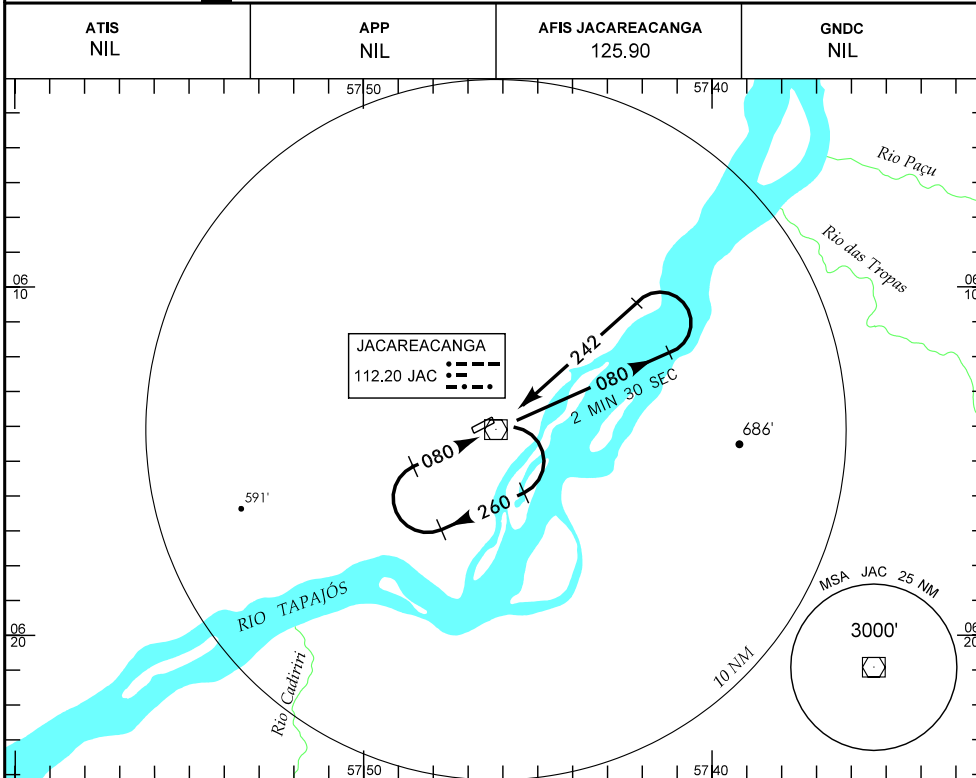


JACAREACANGA / JACAREACANGA
PA-BRASIL
VOR OU VOR/DME RWY 26

IAC - SBK WGS-84



NM

APROXIMAÇÃO PERDIDA SUBIR PARA 3000' NA RDL 242.

RMK: NIL.

C	POUSO DIRETO RWY 26		IFR OPS DIURNA		PARA CIRCULAR			
	VOR		VOR/DME					
A	MDA 1120'	TETO 800'	MDA 840'	TETO 600'	CAT	MDA	TETO	VIS
A	1600 M							
B	2000 M				B	2000 M		
C	3600 M				C	3600 M		
D	4000 M				D	4000 M		
E	4400 M				E	4400 M		

KT	090	110	130	150	170	190					
FPM	600										

f:\mop\iac\pac\sbek\bek_vor_ou_vordme_rwy26.dgn

DEPARTAMENTO DE CONTROLE DO ESPAÇO AÉREO - COMAER - BRASIL.