

IAC - SBGM

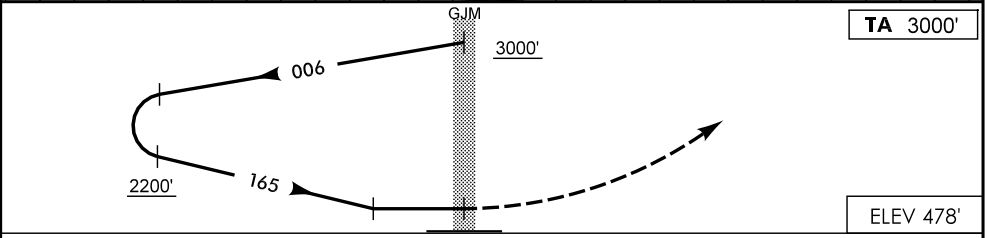
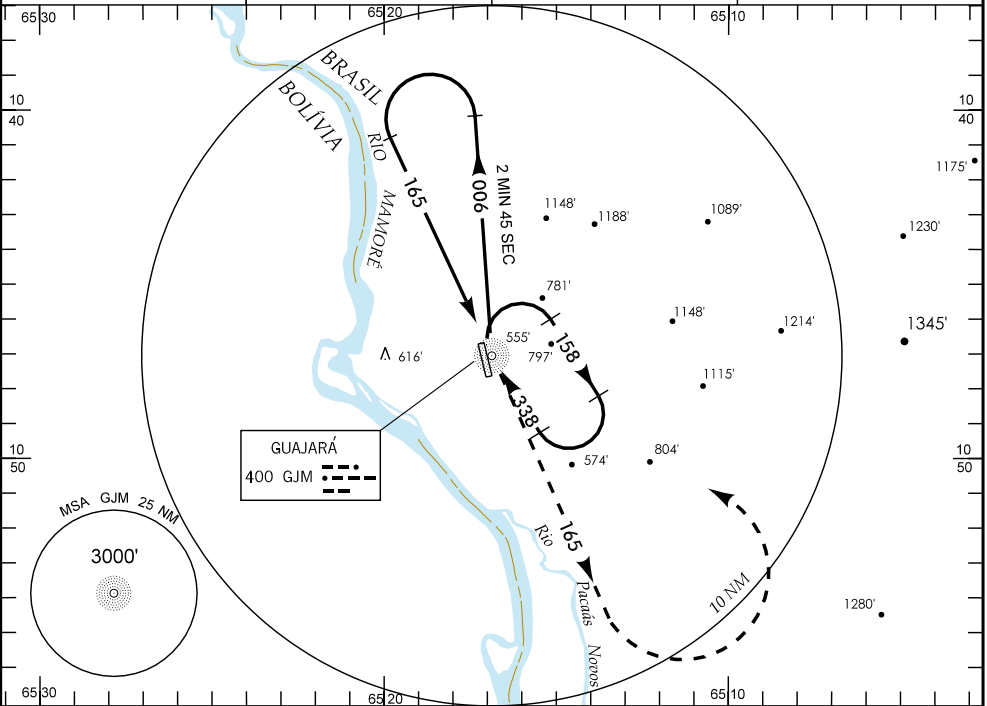
WGS-84

ATIS  
NIL

APP  
NIL

AFIS GUAJARÁ-MIRIM  
125.90

GNDC  
NIL



NM

**APROXIMAÇÃO PERDIDA** SUBIR PARA 3000' NO QDR 165 E RETORNAR COM CURVA À ESQUERDA.

RMK: IAS MAX NO AFASTAMENTO 250 KT.

<b>C</b>	POUSO DIRETO RWY 17	IFR OPS DIURNA / NOTURNA	PARA CIRCULAR			
<b>A</b>	NDB					
<b>T</b>	MDA 920'	TETO 500'	CAT	MDA	TETO	VIS
<b>A</b>	VIS		A	1100'	700'	1600 M
<b>B</b>	1600 M		B	1100'	700'	1600 M
<b>C</b>	2000 M		C	1450'	1000'	4800 M
<b>D</b>	2400 M		D	1490'	1100'	4800 M
<b>E</b>	NA		E	NA		

RAZÃO DE DESCIDA NA APROXIMAÇÃO FINAL						
KT	090	110	130	150	170	190
FPM	700					