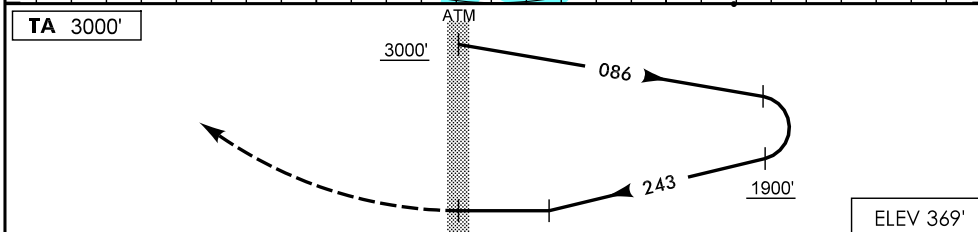
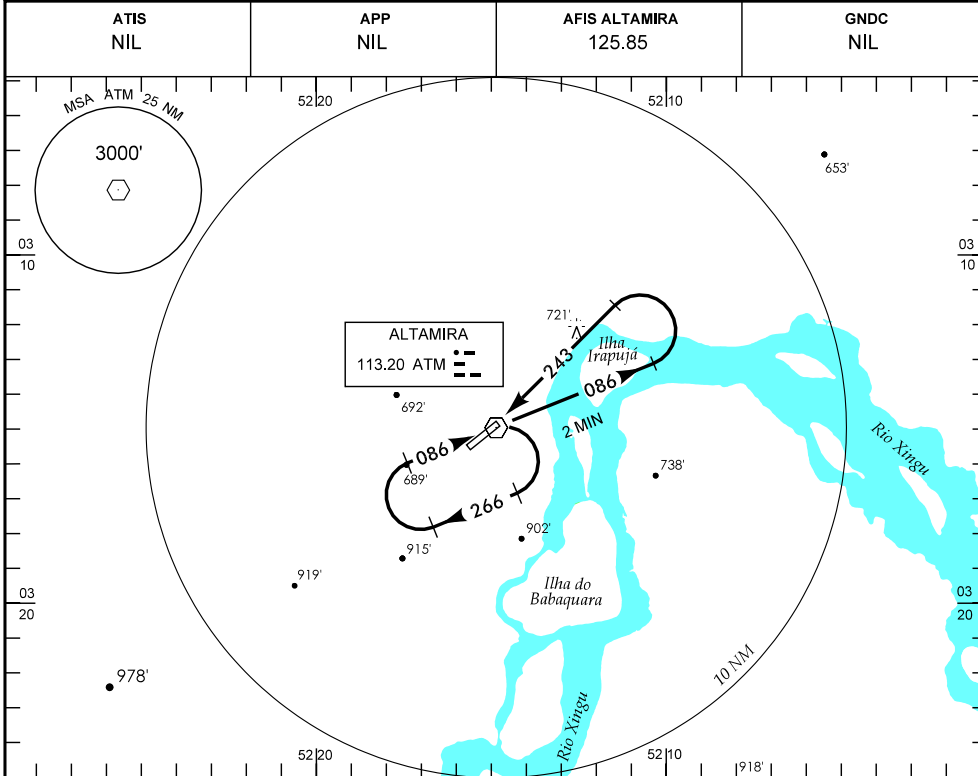


IAC - SBHT WGS-84

ALTAMIRA / ALTAMIRA
PA-BRASIL
VOR RWY 25



TA 3000'

ATM

3000'

086

243

1900'

ELEV 369'

NM

APROXIMAÇÃO PERDIDA SUBIR PARA 3000' NA RDL 243.

RMK: NIL.

C	POUSO DIRETO RWY 25	IFR OPS DIURNA / NOTURNA	PARA CIRCULAR		
A	VOR				
T	MDA 1250'	TETO 900'			
	VIS		CAT	MDA	TETO
A	2000 M		A		2000 M
B			B	1270'	1000'
C	4400 M		C		4400 M
D			D		
E	NA		E	NA	

RAZÃO DE DESCIDA NA APROXIMAÇÃO FINAL						
KT	090	110	120	130	140	160
FPM	600					

f:\map\iac\pa\sbht\vbht_vor_rw25.dgn

DEPARTAMENTO DE CONTROLE DO ESPAÇO AÉREO - COMAER - BRASIL