

**INSTRUMENT APPROACH
CHART (IAC)**

SALVADOR / Deputado Luís Eduardo Magalhães, INTL (SBSV)

AD ELEV: 63'

ILS Y or LOC Y RWY 10

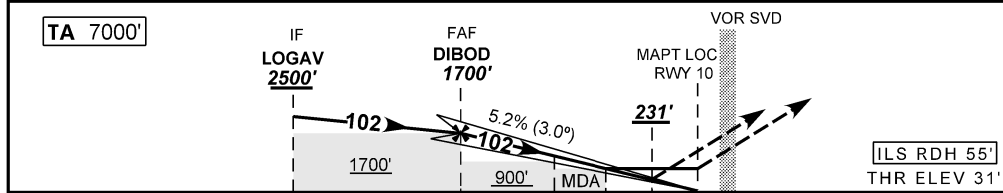
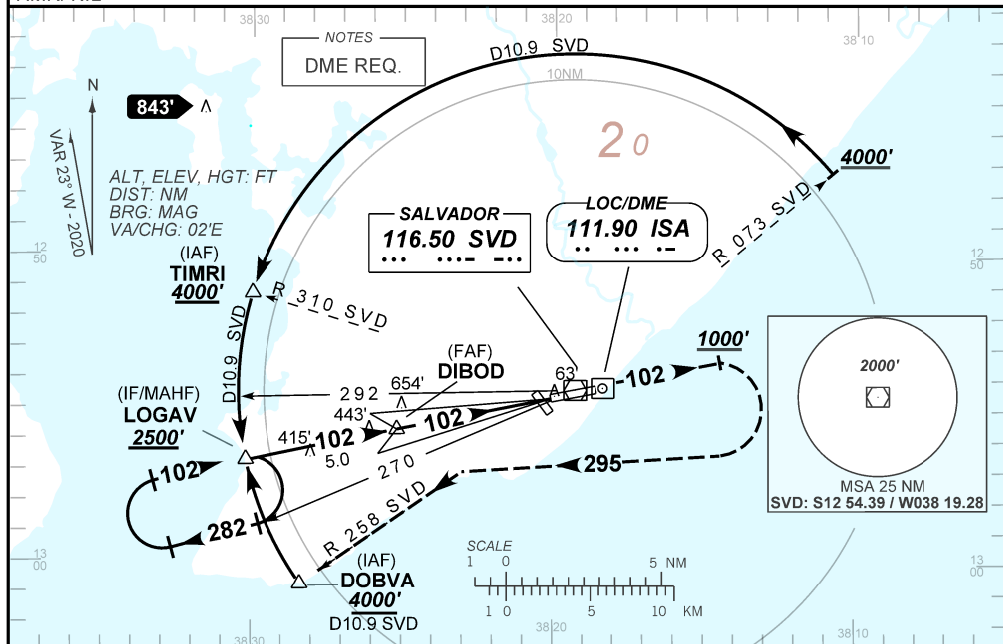
D-ATIS 127.75	APP SALVADOR 119.35 119.80 120.80 129.45	TWR SALVADOR 118.30 118.60 118.95 121.10 121.50	GNDC SALVADOR 121.90
-------------------------	--	---	--------------------------------

LOC ISA 111.90 MHz	FINAL CRS 102°	FAF: 1700'	CAT I DA / (OCH): 231' / (200')	LOC only MDA / (OCH): 410' / (380')
------------------------------	--------------------------	----------------------	---	---

APCH Perdida: Subir para **4000'**. Manter proa **102** até cruzar **1000'**. Após, curvar à DIREITA proa **295** para interceptar RDL **258** do VOR SVD até DOBVA e ingressar no arco DME 10.9 SVD para espera em LOGAV.

Missed APCH: Climb to **4000'**. Maintain heading **102** until passing **1000'**. After, turn RIGHT heading **295** to intercept **258** RDL SVD VOR up to DOBVA to join 10.9 DME SVD arc for holding at LOGAV.

RMK: NIL



TO THR 10 (NM)	10.1	5.1	3.1	1.0	0.5	0.0
TO ISA (DME)	11.8	6.8	4.8	2.7	2.2	1.7

	FAF	4.0	3.1	2.0	1.0	RWY10	KT	090	110	130	150	170	190
	1700	1360	1073	723	410	ALT	FPM	500	600	700	800	900	NA
	1669	1329	1042	692	380	(HGT)	FAF-MAPT	NA					

STRAIGHT-IN	CAT	A	B	C	D	E
CAT I	DA / (OCH)	231' / (200')				NA
	ALS/NO ALS/ RVR ALS (m)	NIL / 1200 / NIL				
LOC	MDA / (OCH)	410' / (380')				
	ALS/NO ALS/ RVR ALS (m)	NIL / 1600 / NIL		NIL / 1700 / NIL		
CIRCLING	MDA / (OCH)	NA				
	VIS (m)	NA				

CHANGES: ADEL DA GFA LAYOUT, RDH, THEL