

STANDARD DEPARTURE CHART  
INSTRUMENT (SID)

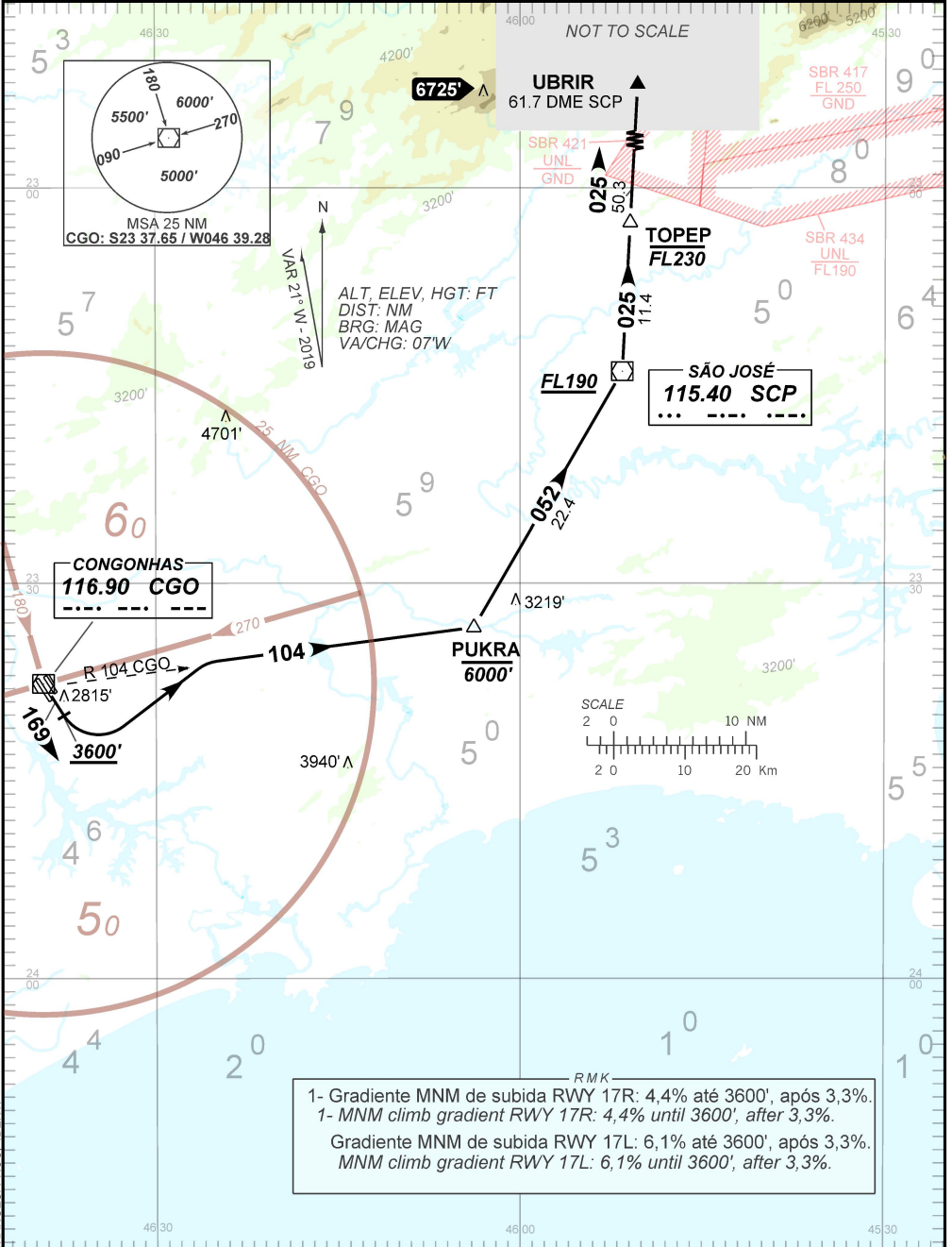
SÃO PAULO / Congonhas (SBSP)

RWY 17R / 17L

AD ELEV: 2631'

PUKRA 2B

TA 8000'	TWR SÃO PAULO 118.05 118.35 127.15 121.50	APP SÃO PAULO 120.45 129.05 129.75 121.35 123.90 121.50	ACC BRASÍLIA 126.15 127.25 123.35 134.00 126.80 128.50 121.50
----------	---	---	---



RMK

1- Gradiente MNM de subida RWY 17R: 4,4% até 3600', após 3,3%.  
1- MNM climb gradient RWY 17R: 4,4% until 3600', after 3,3%.  
Gradiente MNM de subida RWY 17L: 6,1% até 3600', após 3,3%.  
MNM climb gradient RWY 17L: 6,1% until 3600', after 3,3%.

CHANGES PROC. IDENT.