

STANDARD DEPARTURE CHART  
INSTRUMENT (SID)

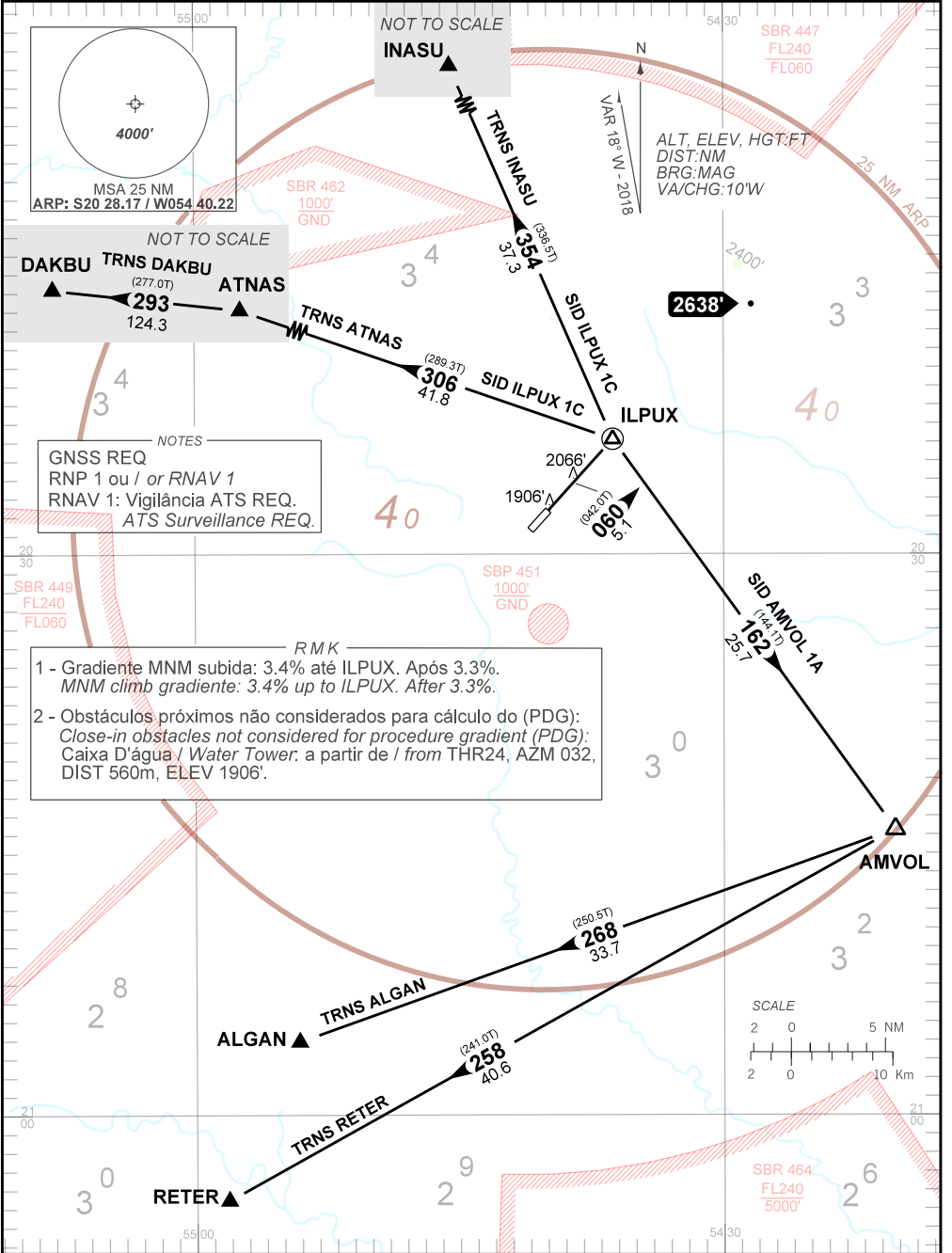
CAMPO GRANDE / Campo Grande, INTL (SBCG)

RWY 06

AD ELEV: 1834'

RNAV AMVOL 1A - ILPUX 1C

TA 5000'	TWR CAMPO GRANDE 118.10 121.50	APP CAMPO GRANDE 119.35 119.65 120.20 121.00 121.50	ACC CURITIBA 128.15 124.85 128.35 135.80 129.25 123.70 121.50
----------	-----------------------------------	--	---



NOTES  
GNSS REQ  
RNP 1 ou / or RNAV 1  
RNAV 1: Vigilância ATS REQ.  
ATS Surveillance REQ.

RMK  
1 - Gradiente MNM subida: 3.4% até ILPUX. Após 3.3%.  
MNM climb gradiente: 3.4% up to ILPUX. After 3.3%.  
2 - Obstáculos próximos não considerados para cálculo do (PDG):  
Close-in obstacles not considered for procedure gradient (PDG):  
Caixa D'água / Water Tower: a partir de / from THR24, AZM 032,  
DIST 560m, ELEV 1906'.

CHANGES: RMK