

INSTRUMENT APPROACH
CHART (IAC)

PORTO ALEGRE / Canoas, MIL (SBCO)

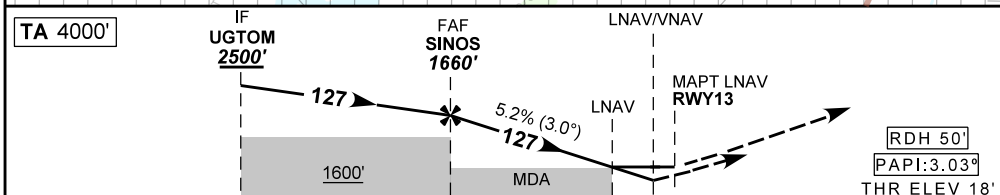
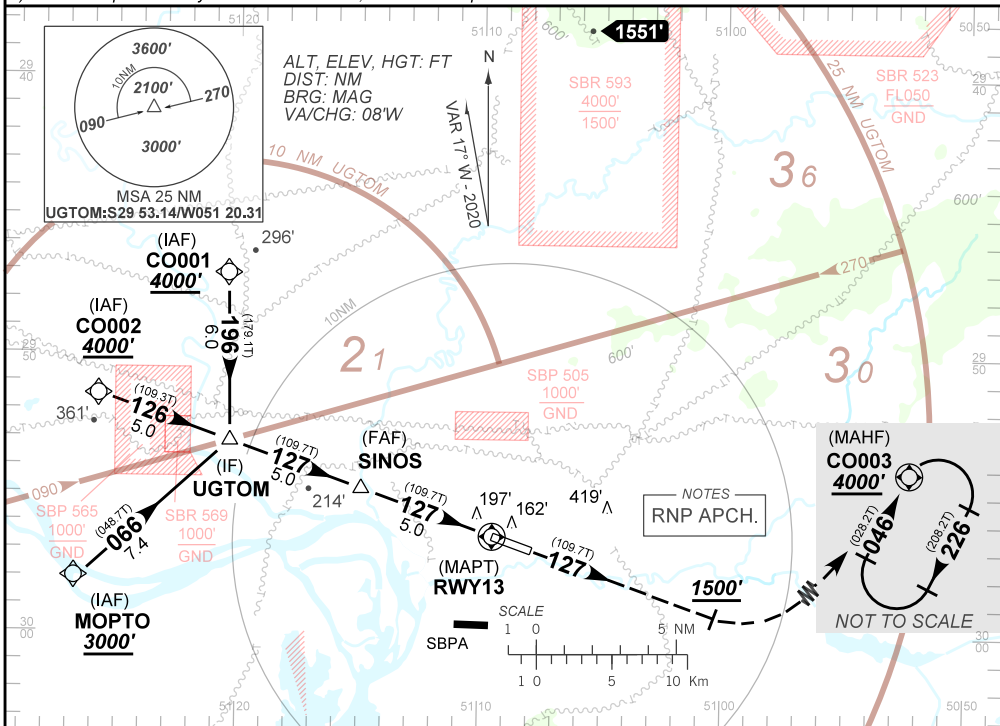
AD ELEV: 26'

RNAV(GNSS) RWY 13

ATIS NIL	APP PALEGRE 119.00 120.10 120.55 128.90 121.50	TWR CANOAS 118.50 122.80 (MIL) 121.50	GNDC CANOAS 121.70
N/A	FINAL CRS 127°	FAF 1660'	LNAV/VNAV DA / (OCH): 357' / (340')
			LNAV MDA / (OCH): 450' / (440')

APCH Perdida: Subir para **4000'**. Manter rumo **127°** até cruzar **1500'**. Então, curvar à ESQUERDA direto CO003 para espera.
Missed APCH: Climb to **4000'**. Maintain course **127°** until passing **1500'**. Then, turn LEFT direct CO003 for holding.

RMK: 1) Para sistemas BARO-VNAV não compensados, procedimento LNAV/VNAV não autorizado abaixo de -10°C.
1) For uncompensated systems BARO-VNAV, LNAV/VNAV procedure not authorized below -10°C.



TO THR 13 (NM)	10.0	5.0	1.2	1.0	0.0
----------------	------	-----	-----	-----	-----

	SINOS	4.0	3.0	2.0	1.2	RWY13	KT	090	110	130	150	170	190
	1660	1342	1023	705	450	ALT	FPM	500	600	700	800	900	1000
	1642	1324	1005	687	440	(HGT)	FAF-MAPT			NA			

STRAIGHT-IN	CAT	A	B	C	D	E
	LNNAV/VNAV	DA / (OCH)	357' / (340')			
LNNAV	MDA / (OCH)	450' / (440')				
	MALS/SINO MALS/RVR ALS (m)	800 / 1600 / NIL		1300 / 2000 / NIL		
CIRCLING	MDA / (OCH)	NA				
	VIS (m)					

CHANGES: NEW CHART.