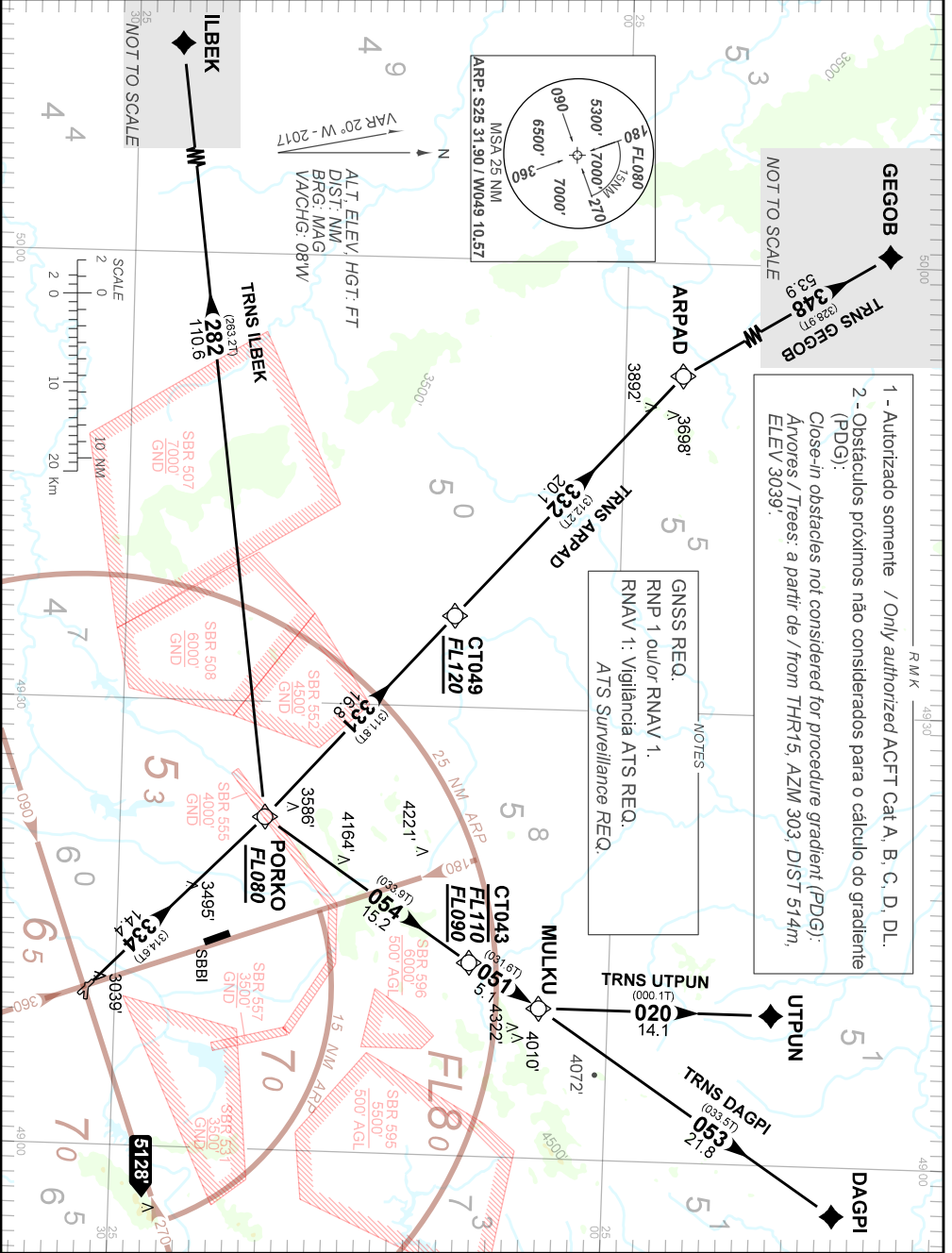


AD ELEV: 2989'

RNAV MULKU 1A - PORKO 1B

TA 7000'	TWR CURITIBA 118.15 121.50	APP CURITIBA 119.70 119.95 120.65 129.55 120.95 133.15 121.50	ACC CURITIBA 125.80 127.20 126.95 128.25 121.50
----------	-------------------------------	---	---



NOT TO SCALE

GEGOB 53.9 (53.87)

NOT TO SCALE

1 - Autorizado somente / Only authorized ACFT Cat A, B, C, D, DL. (PDG).
2 - Obstáculos próximos não considerados para o cálculo do gradiente (PDG).
Close-in obstacles not considered for procedure gradient (PDG).
Árvores / Trees: a partir de / from THR15, AZM 303, DIST 514m, ELEV 3039'.

NOTES

GSSS REQ.
RNP 1 ou/ou RNAV 1.
RNAV 1: Vigilância ATS REQ.
ATS Surveillance REQ.