

**INSTRUMENT APPROACH
CHART (IAC)**

JOINVILLE / Lauro Carneiro de Loyola (SBJV)

AD ELEV: 15'

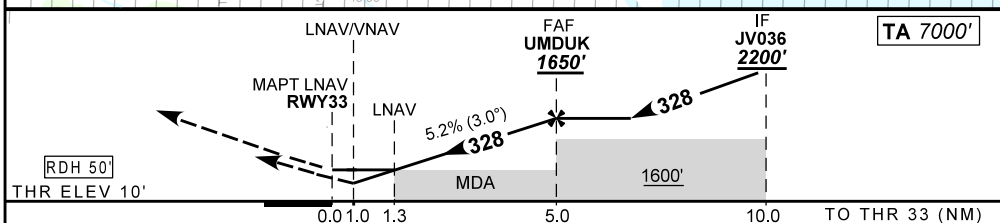
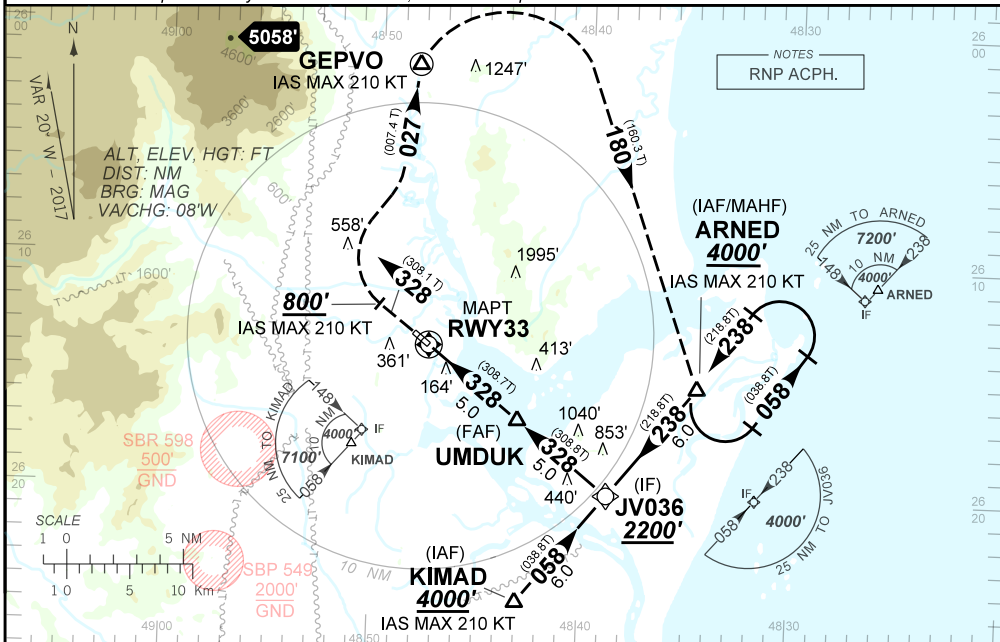
RNAV (GNSS) Z RWY 33

ATIS NIL	APP CURITIBA 119.70 119.95 120.65 120.95 129.55 133.15 121.50				TWR JOINVILLE 118.00	GND NIL
N/A	FINAL CRS 328°	FAF 1650'	LNAV/VNAV DA / (OCH): 365' (355')		LNAV MDA / (OCH): 470' (460')	

APCH Perdida: Subir para **4000'**. Manter rumo **328**, IAS MAX 210KT, até cruzar **800'**. Curvar à DIREITA rumo **027**, IAS MAX 210KT, para GEPVO. Curvar à DIREITA rumo **180**, IAS MAX 210KT, para ARNED, para espera.

Missed APCH: Climb to **4000'**. Maintain course **328**, IAS MAX 210KT, until passing **800'**. Then, turn RIGHT course **027**, IAS MAX 210KT, to GEPVO. Then, turn RIGHT course **180**, IAS MAX 210KT, to ARNED for holding.

RMK: 1) Para sistemas BARO-VNAV não compensados, procedimento LNAV/VNAV não autorizado abaixo de -10°C.
For uncompensated systems BARO-VNAV, LNAV/VNAV procedure not authorized below -10°C.



	RWY33	1.3	2.0	3.0	4.0	UMDUK	KT	090	110	130	150	170	190
	ALT	470	697	1015	1334	1650	FPM	500	600	700	800	900	NA
	(HGT)	460	687	1005	1324	1640	FAF-MAPT	NA					

STRAIGHT-IN	CAT	A	B	C	D	E
LNAV/VNAV	DA / OCH / TETO ALS/NO ALS/RVR ALS (m)	365' / (355') / 400' NIL / 1600' / NIL				NA
LNAV	MDA / OCH / TETO ALS/NO ALS/RVR ALS (m)	470' / (460') / 500' NIL / 1600' / NIL				NA
CIRCLING	MDA / OCH / TETO VIS (m)	NA				

CHANGES: LAYOUT, PROC. IDENT.