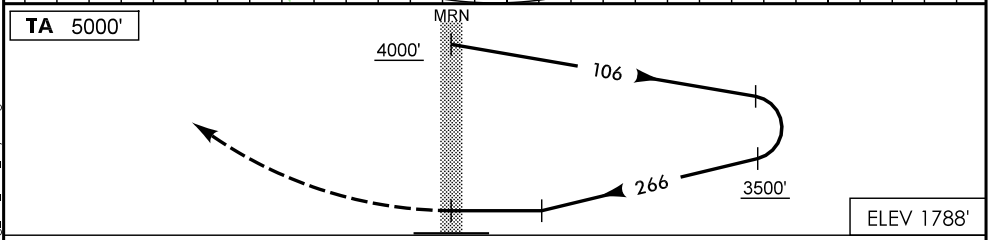
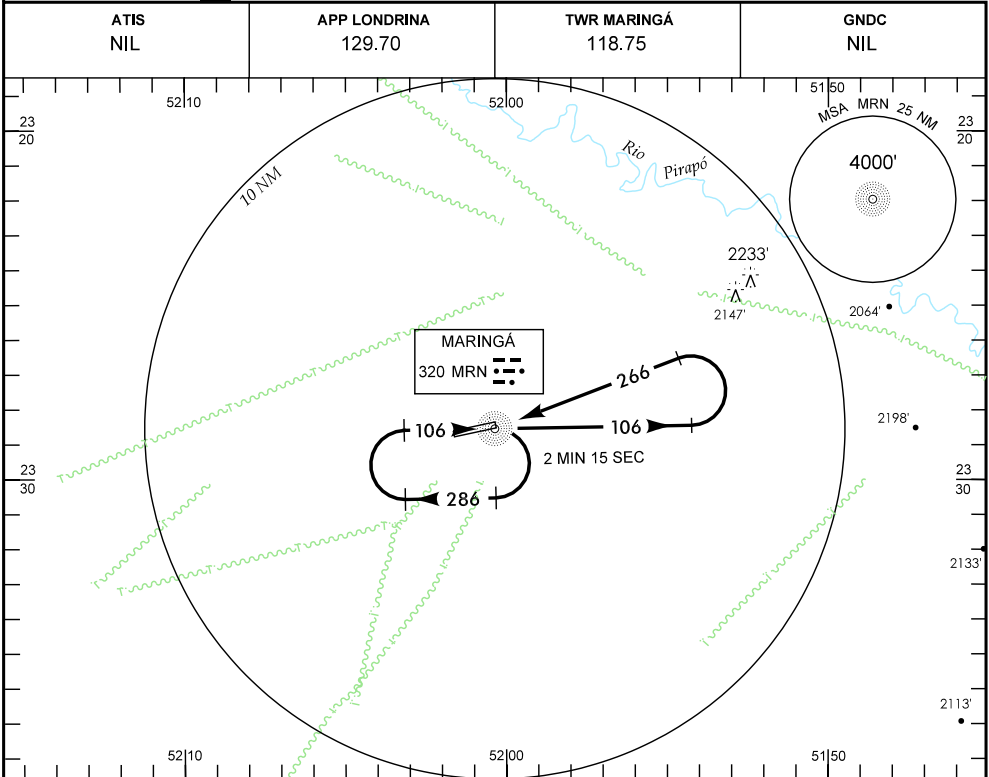


IAC - SBMG

WGS-84



NM

TA 5000'

MRN

ELEV 1788'

APROXIMAÇÃO PERDIDA SUBIR PARA 4000' NO QDR 266.

RMK: IAS MAX NO AFASTAMENTO 210 KT.

C	POUSO DIRETO RWY 28	IFR OPS DIURNA / NOTURNA	PARA CIRCULAR		
A	NDB				
T	MDA 2540'	TETO 800'	CAT	MDA	TETO
A	VIS		A		
B	1600 M		B		
C	2000 M		C		
D	3800 M		D		
E	4000 M		E		
	4400 M			NA	

RAZÃO DE DESCIDA NA APROXIMAÇÃO FINAL						
KT	090	110	130	150	170	190
FPM	650					