

**IAC - SBMN**

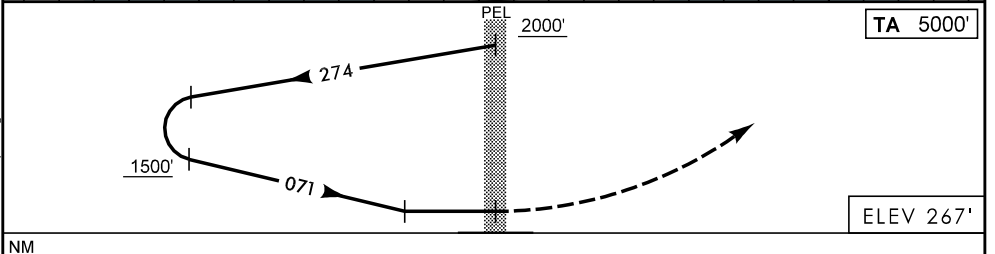
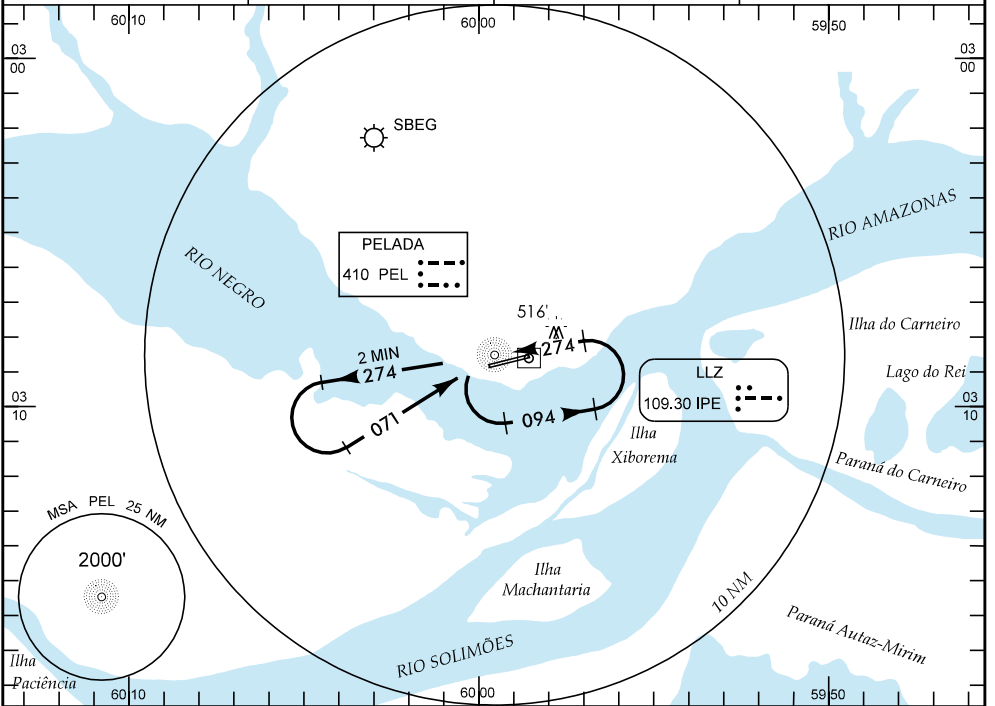
WGS-84

ATIS  
127.65

APP MANAUS  
119.25 119.70 120.40

TWR MANAUS  
118.10

GNDC  
NIL



**APROXIMAÇÃO PERDIDA** SUBIR PARA 2000' NO QDR 071, APÓS APROAR O NDB PEL.

**RMK** 1) POUSO RWY 27 - CIRCULE SETOR S DO AERÓDROMO.

<b>C</b>	POUSO DIRETO RWY 09	IFR OPS	DIURNA / NOTURNA	PARA CIRCULAR (VER RMK)		
<b>A</b>	NDB			CAT	MDA	TETO
<b>T</b>	MDA 830'	TETO 600'		A	830'	600'
	VIS			B		
A	1600 M			C		2400 M
B	2400 M			D	880'	700'
C	2400 M			E		3200 M
D	2800 M					
E	3200 M					

RAZÃO DE DESCIDA NA APROXIMAÇÃO FINAL						
KT	90	110	130	150	170	190
FPM	600					