

CARTA DE APROXIMAÇÃO  
POR INSTRUMENTOS (IAC)  
INSTRUMENT APPROACH CHART (IAC)

BRASÍLIA / Pres. Juscelino Kubitschek, INTL (SBBR)

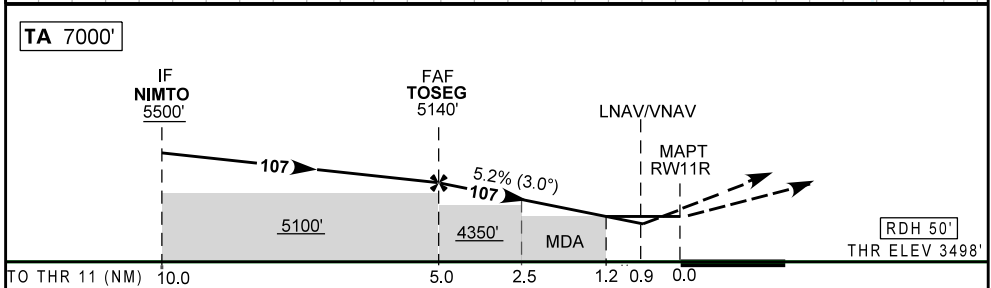
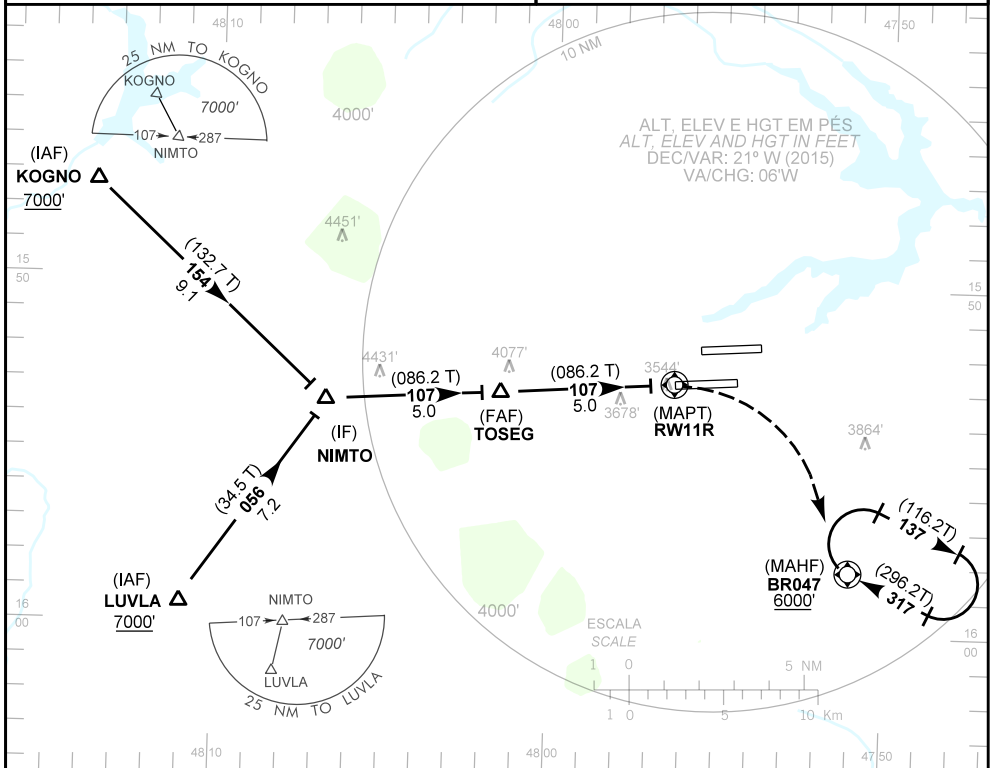
RNAV (GNSS) Z RWY 11R

AD ELEV: 3498'	D-ATIS 127.80	APP BRASÍLIA 120.65 129.15 129.60 119.50 121.50	TWR BRASÍLIA 118.10 118.45 118.75 121.50	GNDC BRASÍLIA 121.80 121.95
----------------	------------------	--	--	--------------------------------

RMK: 1) Procedimento BARO-VNAV não autorizado abaixo de 0°C.  
RMK: 1) BARO-VNAV procedure not authorized below 0°C.  
2) RNP APCH.

Aproximação Perdida: Curvar à direita e subir para 6000',  
gradiente de 5%, para espera em BR047.

Missed Approach: Turn right and climb to 6000', 5% gradient,  
for holding at BR047.



TOSEG	4.0	3.0	2.0	1.2	RW11R	KT	090	110	130	150	170	190
5140	4821	4502	4184	3920	ALT	FPM	500	600	700	800	900	1000
1642	1323	1004	686	430	(HGT)	FAF-MAPT 5NM	NIL					

POUSO DIRETO STRAIGHT-IN	CAT	A	B	C	D	E
	DA / OCH	3823 / 330				
LNAV/VNAV	ALS/NO ALS/ RVR ALS (m)	800 / 1500 / NIL				
	MDA / OCH	3920 / 430				
LNAV	ALS/NO ALS/ RVR ALS (m)	800 / 1600 / NIL		1300 / 2000 / NIL		
	MDA / OCH	NA				
CIRCULAR TO CIRCLE	MDA / OCH	NA				
	VIS (m)	NA				

CHANGES: D-ATIS, ELEV, EAC, PROC, RMK.