

INSTRUMENT APPROACH
CHART (IAC)

GAVIÃO PEIXOTO / EMBRAER - Unidade Gavião Peixoto (SBGP)

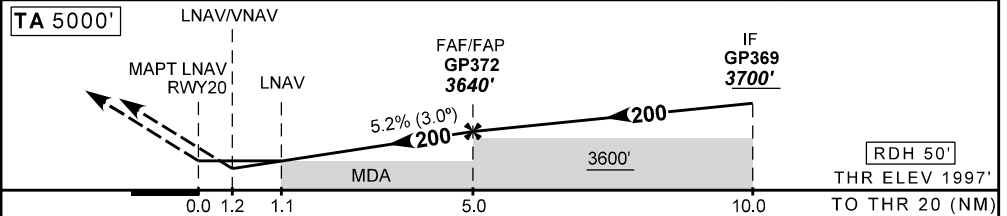
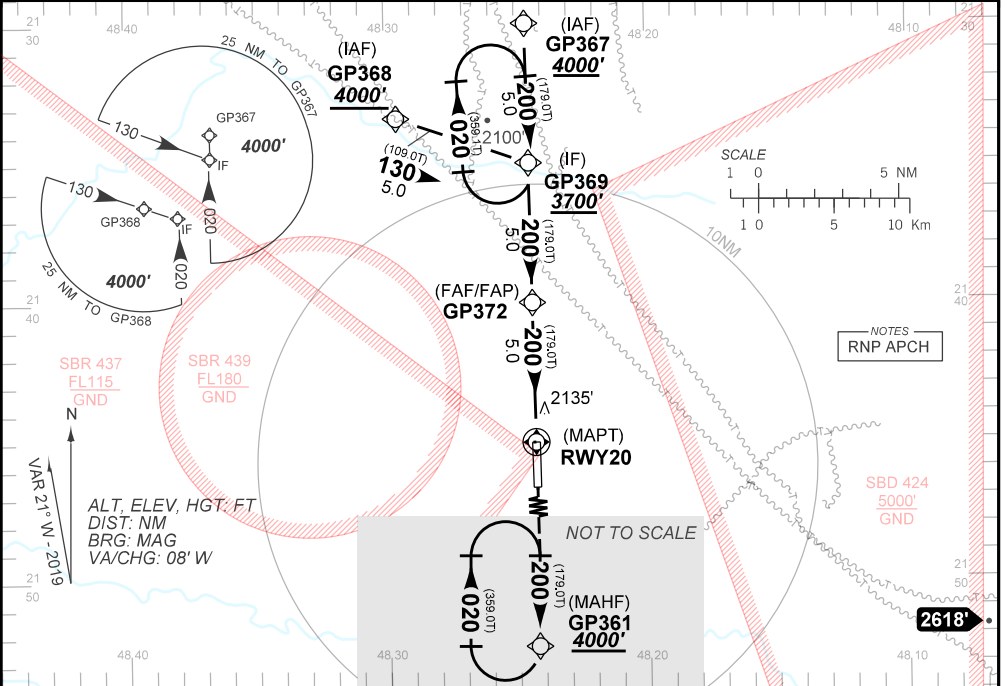
AD ELEV: 1998'

RNAV (GNSS) RWY 20

ATIS NIL	APP NIL	AFIS GAVIÃO PEIXOTO 118.95	GNDC GAVIÃO PEIXOTO 121.80
N/A	FINAL CRS 200°	FAF: 3640'	LNAV/VNAV DA / (OCH): 2340' / (350') LNAV MDA / (OCH): 2400' / (410')

APCH Perdida: Subir para **4000'** no rumo **200** até GP361.

RMK: 1) ACFT não compensadas Baro-VNAV, LNAV/VNAV NÃO AUTORIZADO abaixo de -10°C e acima de 50°C. 2) Espera em GP369 a 3700' ou acima.



RWY20	1.1	2.0	3.0	4.0	5.0		KT	090	110	130	150	170	190
ALT	2400	2684	3002	3320	3640		FPM	500	600	700	800	900	1000
(HGT)	410	687	1005	1324	1642		FAF-MAPT	NA					

STRAIGHT-IN	CAT	A	B	C	D	E
	DA / (OCH)	2340' / (350')				
LNAV/VNAV	ALS/NO ALS/ RVR ALS (m)	NIL / 1600 / NIL				
	MDA / (OCH)	2400' / (410')				
LNAV	ALS/NO ALS/ RVR ALS (m)	NIL / 1600 / NIL		NIL / 1900 / NIL		
	MDA / (OCH)	NA				
CIRCLING	VIS (m)	NA				

CHANGES: DEC. LAYOUT. PROC.