

STANDARD DEPARTURE CHART
INSTRUMENT (SID)

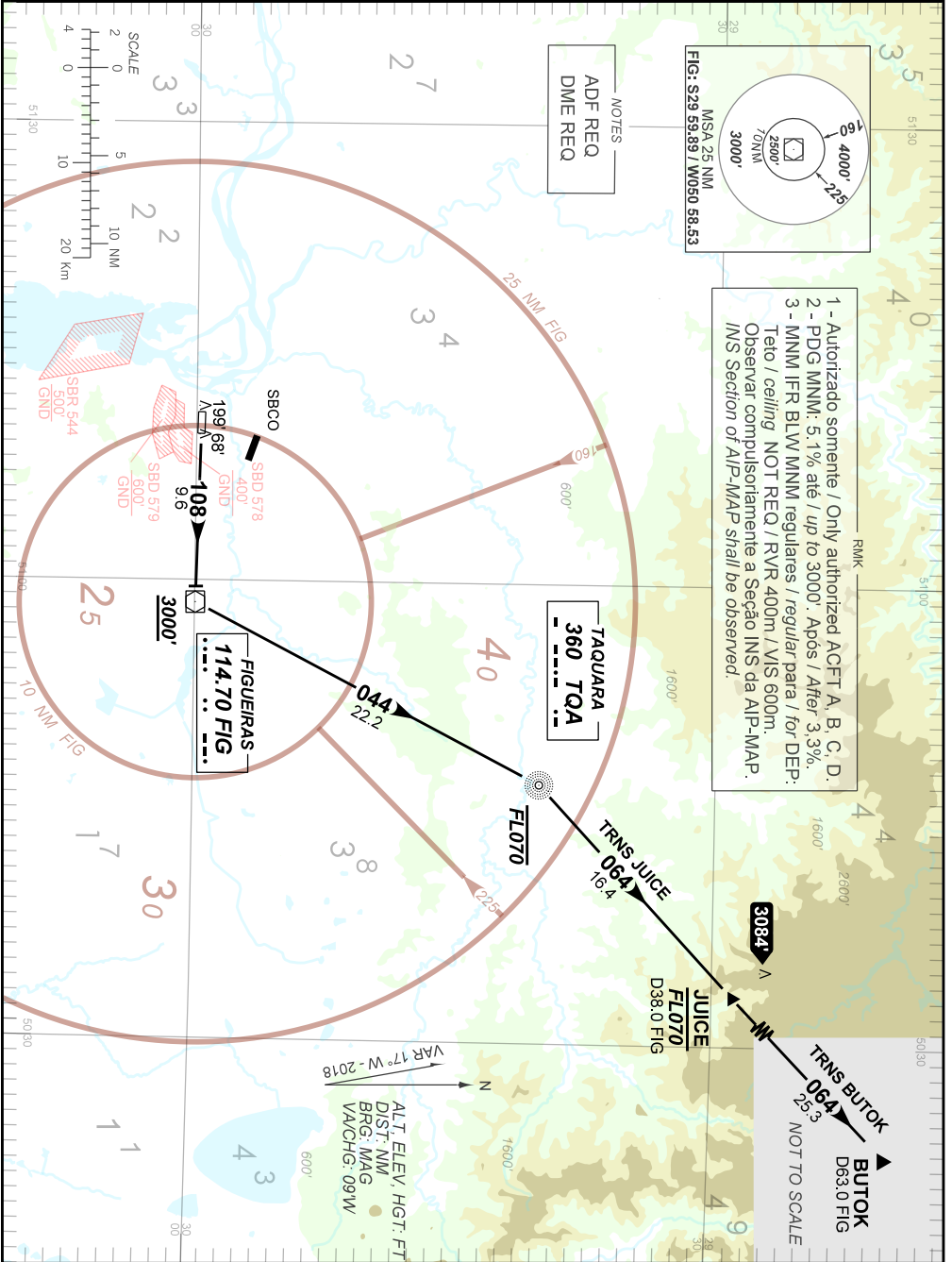
PORTO ALEGRE / Salgado Filho, INTL (SBPA)

RWY 11

TQA 1A

AD ELEV: 12'

TA 4000'	TWR PALEGRE 118.10 121.50	APP PALEGRE 119.00 120.10 120.55 128.90 121.50	ACC CURITIBA 135.85 128.45 121.50
----------	------------------------------	---	--------------------------------------



- NOTES
- 1 - Autorizado somente / Only authorized ACFT A, B, C, D.
 - 2 - PDG MNM: 5.1% até / up to 3000'. Após / After 3.3%.
 - 3 - MNM IFR BLW MNM regulares / regular para / for DEP: Tejo / ceiling NOT REQ / RVR 400m / VIS 600m. Observar compulsoriamente a Seção INS da AIP-MAP. INS Section of AIP-MAP shall be observed.

ADFE REQ
DME REQ

ALT ELEV, HGT: FT
DST: NM
BRG: MAG
VAR CHG: 09 W
VAR 17° W - 2018

CHANGES: LAYOUT.