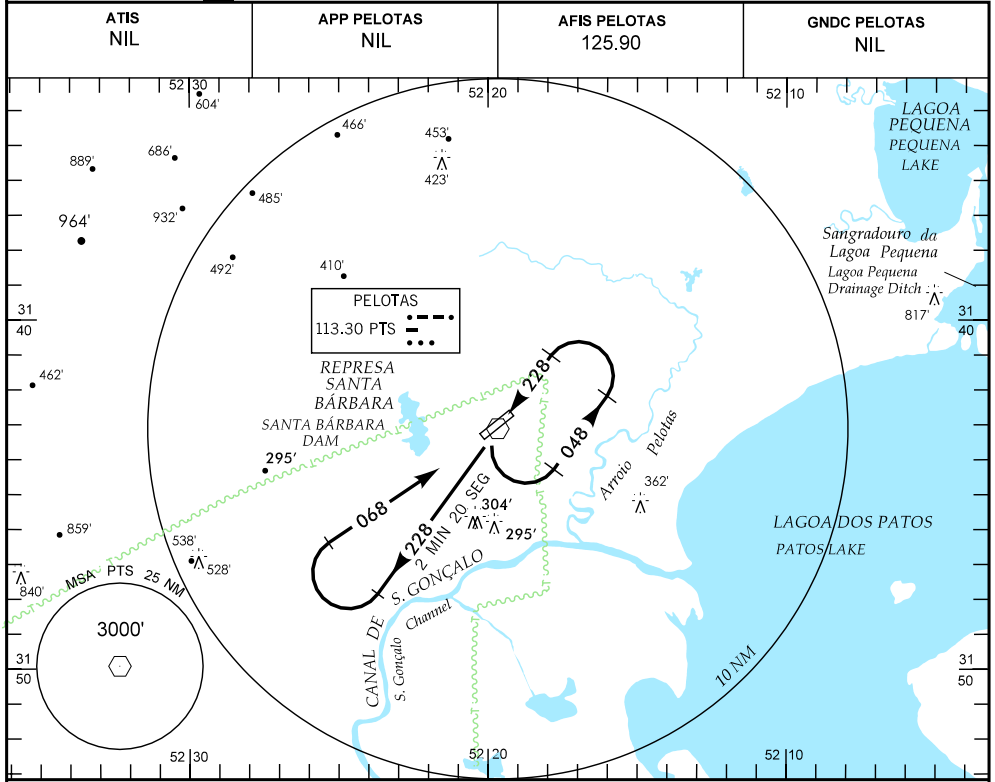


# IAC - SBPK

WGS-84

PELOTAS / PELOTAS, INTL  
RS-BRASIL

**VOR RWY 06**



**RMK:** IAS MAX NA INICIAL 190 KT. MAX IAS AT INITIAL 190 KT.

C	POUSO DIRETO RWY 06		STRAIGHT-IN TO RWY 06		IFR OPS DIURNA / NOTURNA DAY / NIGHT		PARA CIRCULAR TO CIRCLING (RMK)				
	VOR						TETO CEILING 700'				
A	MDA 660'						TETO CEILING 700'				
T	VIS						CAT	MDA	TETO CEILING	VIS	
A	1600 M						A	660'	700'	1600 M	
B	2800 M						B			2800 M	
C	3200 M						C			3200 M	
D	3600 M						D			3600 M	
E	3600 M						E			710'	3600 M

RAZÃO DE DESCIDA NA APROXIMAÇÃO FINAL RATE OF DESCENT ON FINAL APPROACH										
KT	090	110	130	150	170	190				
FPM	600									

\\lca\_server-05\vsfbb-Producao\AIP-MA\FM\AIP-PELOTAS\S3BPK\bpk\_ldc\_vor\_rwy06.dgm

DEPARTAMENTO DE CONTROLE DO ESPAÇO AÉREO - COMAER - BRASIL