

**INSTRUMENT APPROACH
CHART (IAC)**

GAVIÃO PEIXOTO / EMBRAER - Unidade Gavião Peixoto (SBGP)

**CARTA DE USO EXCLUSIVO
ENSAIO EM VOO**

ILS Y RWY 20

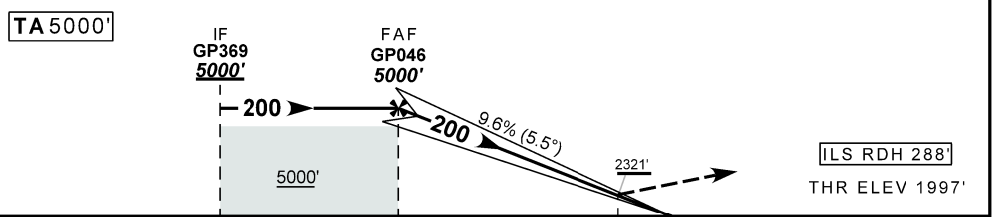
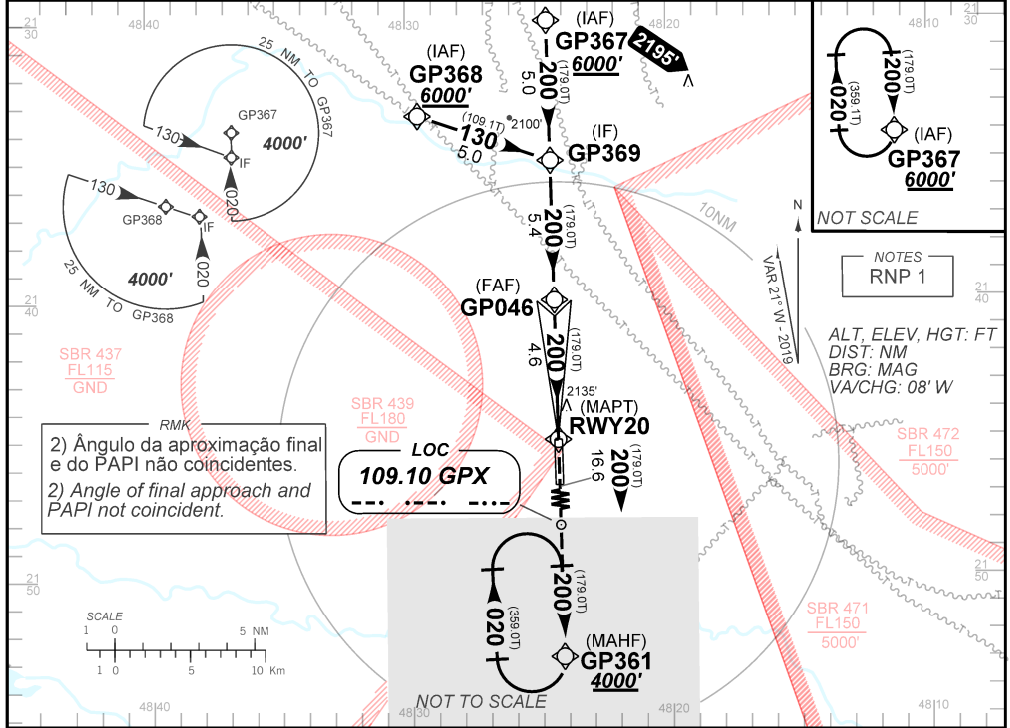
AD ELEV: 1998'

ATIS NIL	APP NIL	AFIS GAVIÃO 118.95	GND: GAVIÃO 121.80
LOC GPX 109.10 MHz	FINAL CRS 200°	FAF: 5000'	CAT I DA / (OCH): 2321' (324')

APCH Perdida: Subir para **4000'**. Manter rumo **200** até GP361 para espera.

Missed APCH: Climb to **4000'**. Maintain course **200** up to GP361 for holding.

RMK: 1) Procedimento de uso exclusivo da EMBRAER para ensaio em voo. Compulsório voo diurno sob VFR.
1) Procedure of exclusive use by EMBRAER for flight test. Compulsory daylight flight under VFR.



TO THR 20 (NM)	10.0	4.6	0.5			
	NIL	RWY20 ALT (HGT)	KT FPM FAF-MAPT	NIL		
STRAIGHT-IN	CAT	A	B	C	D	E
CAT I	DA / (OCH)	2321' / (324')				
	ALS/NO ALS/ RVR ALS (m)	NIL / 1600 / NIL				
CIRCLING	MDA / (OCH)	NA				
	VIS (m)					

CHANGES: A1'S SERVICE: WPT

AMDT 2006C 21 MAY 20

DEPARTAMENTO DE CONTROLE DO ESPAÇO AÉREO
CARTA DE USO EXCLUSIVO: ENSAIO EM VOO

SBGP_IAC_00E 1/1
IAC ILS Y RWY 20