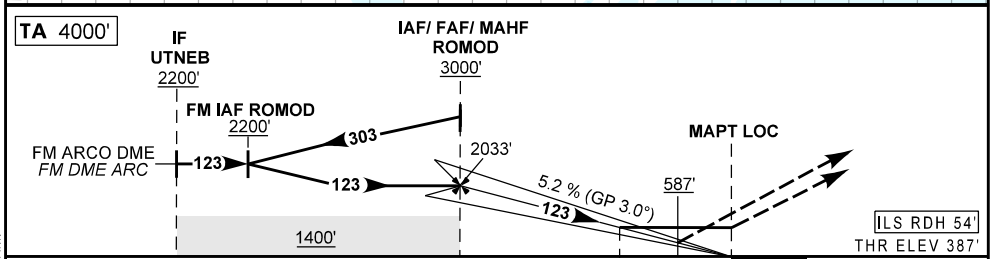
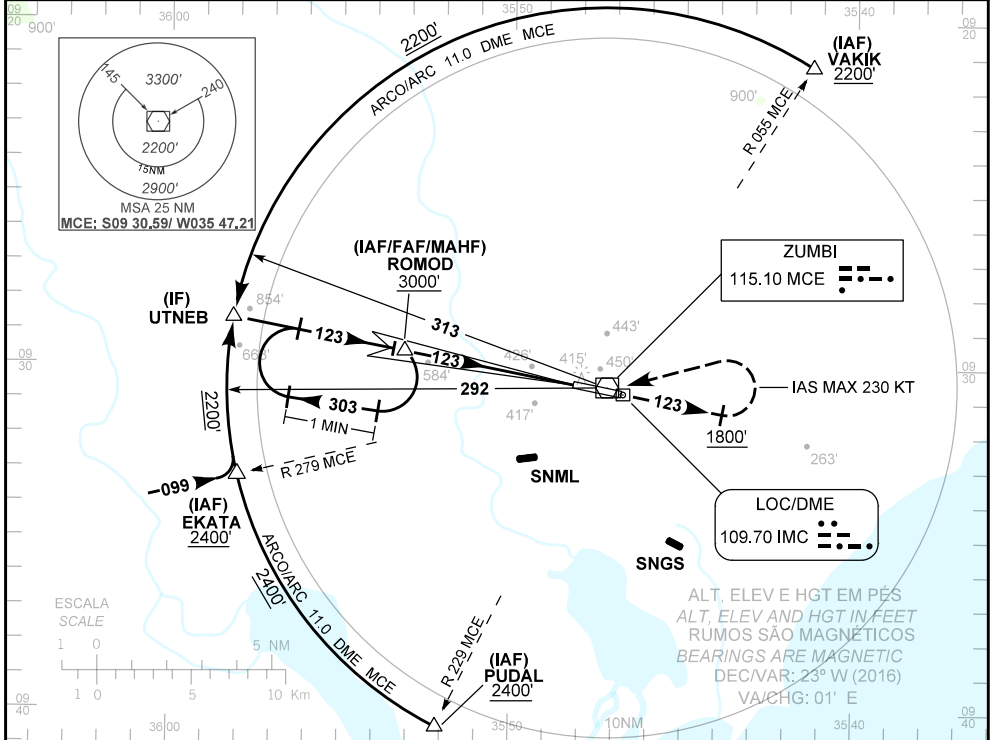


CARTA DE APROXIMAÇÃO
POR INSTRUMENTOS (IAC)
INSTRUMENT APPROACH CHART (IAC)

MACEIÓ / Zumbi dos Palmares (SBMO)

ILS Z ou/ or LOC Z RWY 12

AD ELEV: 387'	ATIS NIL	APP MACEIÓ 119.25 128.90 121.50	TWR MACEIÓ 118.00 118.25 121.50	GNDC NIL
<p>RMK: 1) D-ATIS AVBL. 2) VEL MAX de cruzamento de cabeceira: 190 KIAS.</p> <p>RMK: 1) D-ATIS AVBL. 2) MAX threshold crossing speed: 190 KIAS.</p>		<p>Aproximação Perdida: 1) Subir para 3000' na proa 123. Ao passar 1800', curvar à esquerda, voar direto até o VOR Zumbi. Então, curvar à direita, RDL 302 MCE, até ROMOD para espera. 2) Curva da aproximação perdida limitada a IAS MAX 230 KT.</p> <p>Missed Approach: 1) Climb to 3000' on heading 123. On passing 1800', turn left, fly direct up to Zumbi VOR. Then turn right on 302 RDL MCE to ROMOD for holding. 2) Missed approach turning limited to 230 Kt IAS maximum.</p>		



TO THR 12 (NM)	10.0	5.0	1.2	0.4	0.0
TO IMC (DME)	11.5	6.5	2.7	1.9	1.5

ROMOD	4.0	3.0	2.0	1.2	0.4	RWY12	KT	090	110	130	150	170	190
2033	1734	1416	1098	830	587	ALT	FPM	500	600	700	800	900	1000
1646	1347	1029	711	450	200	(HGT)	FAF-MAPT	NIL					

POUSO DIRETO STRAIGHT IN	CAT	A	B	C	D	E
	DA / OCH / TETO	587 / 200 / 200				
CAT I	ALS/NO ALS/ RVR ALS (m)	NIL/ 1200 / NIL				
	MDA / OCH / TETO	830 / 450 / 500				
LOC	ALS/NO ALS/RVR ALS (m)	NIL/ 1600 / NIL		NIL/ 2100 / NIL		
	MDA / OCH / TETO	NA				
CIRCULAR TO CIRCLE	MDA / OCH / TETO	NA				
	VIS (m)	NA				

MODIFICAÇÕES / CHANGES: CARTA NOVA/NEW CHART.