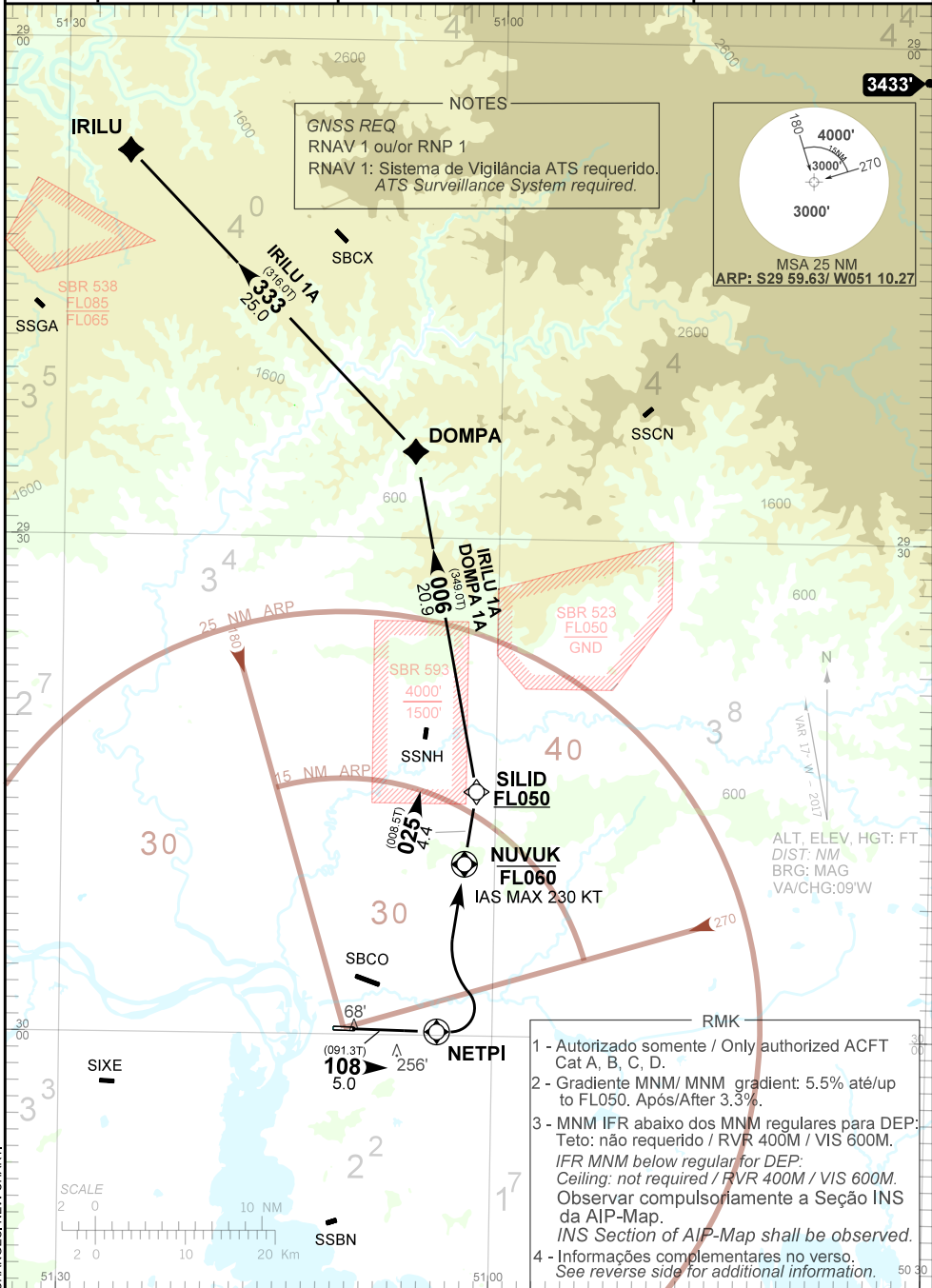
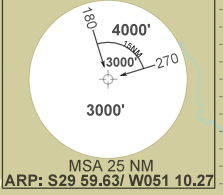


AD ELEV: 12'

TA 4000'	TWR PORTO ALEGRE 118.10 121.50	APP PORTO ALEGRE 119.00 120.10 120.55 128.90 121.50	AFIS CAXIAS 131.60
----------	-----------------------------------	--	-----------------------



NOTES  
GNSS REQ  
RNAV 1 ou/ou RNP 1  
RNAV 1: Sistema de Vigilância ATS requerido.  
ATS Surveillance System required.



- 1 - Autorizado somente / Only authorized ACFT Cat A, B, C, D.
- 2 - Gradiente MNM/ MNM gradient: 5.5% até/up to FL050. Após/After 3.3%.
- 3 - MNM IFR abaixo dos MNM regulares para DEP: Teto: não requerido / RVR 400M / VIS 600M.  
IFR MNM below regular for DEP: Ceiling: not required / RVR 400M / VIS 600M. Observar compulsoriamente a Seção INS da AIP-Map.  
INS Section of AIP-Map shall be observed.
- 4 - Informações complementares no verso. See reverse side for additional information.

CHANGES: NEW CHART.

— R M K —

5 - Obstáculos próximos não considerados para o cálculo do gradiente de subida:  
*Close-in obstacles not taken into account on climb gradient calculation*

Árvores / Trees: a partir de / from THR29, AZM 160, DIST 150m, ELEV 68'.

6 - Gradiente superior a 3.3% devido aos espaços aéreos condicionados SBR523 e SBR593.  
*Climb gradient greater than 3.3% due to SBR523 and SBR593 conditioned airspaces.*