

STANDARD ARRIVAL CHART  
INSTRUMENT (STAR)

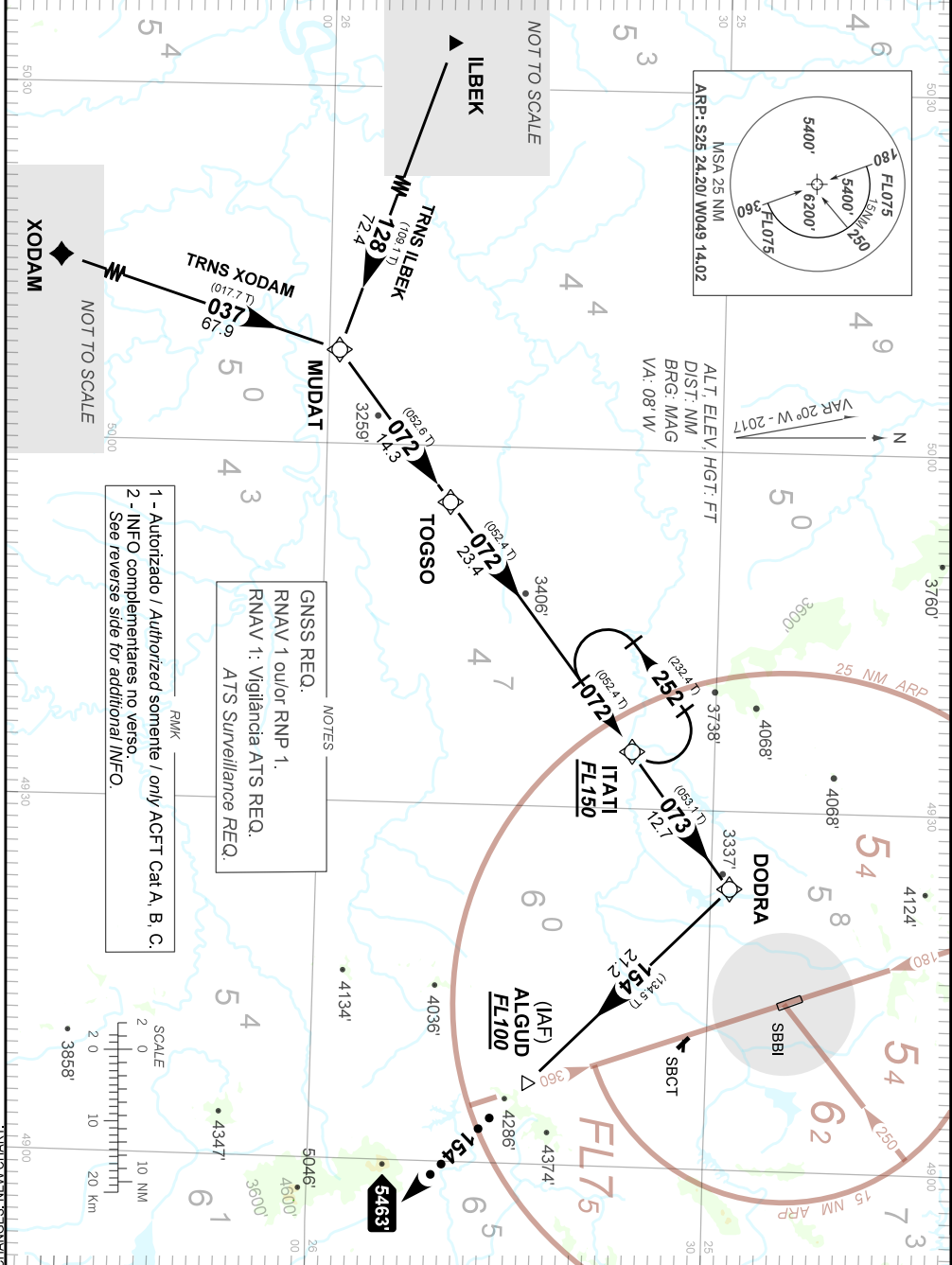
CURITIBA / Bacacheri (SBBI)

RWY 36

RNAV MUDAT 1A

AD ELEV: 3059'

TA 7000'	ATIS 132.325	ACC CURITIBA 126.10 127.50 125.80 127.20 124.90 133.80 121.50				APP CURITIBA 119.70 119.95 120.65 120.95 129.55 133.15 121.50				TWR BACACHERI 118.90
----------	--------------	---	--	--	--	---	--	--	--	-------------------------



CHANGES: NEW CHART

FALHA DE COMUNICAÇÃO  
COMMUNICATION FAILURE

Acionar transponder A7600, completar chegada até ALGUD. Abandonar ALGUD, no rumo 154 por 20NM. Mínimo FL100. Então, curvar à esquerda para interceptar aproximação final do procedimento em uso pelo ATC.

*Set transponder A7600, complete arrival until ALGUD. Leave ALGUD on course 154 for 20NM. Minimum FL100. Then, turn left to intercept final approach of the procedure in use by ATC.*