

STANDARD ARRIVAL CHART  
INSTRUMENT (STAR)

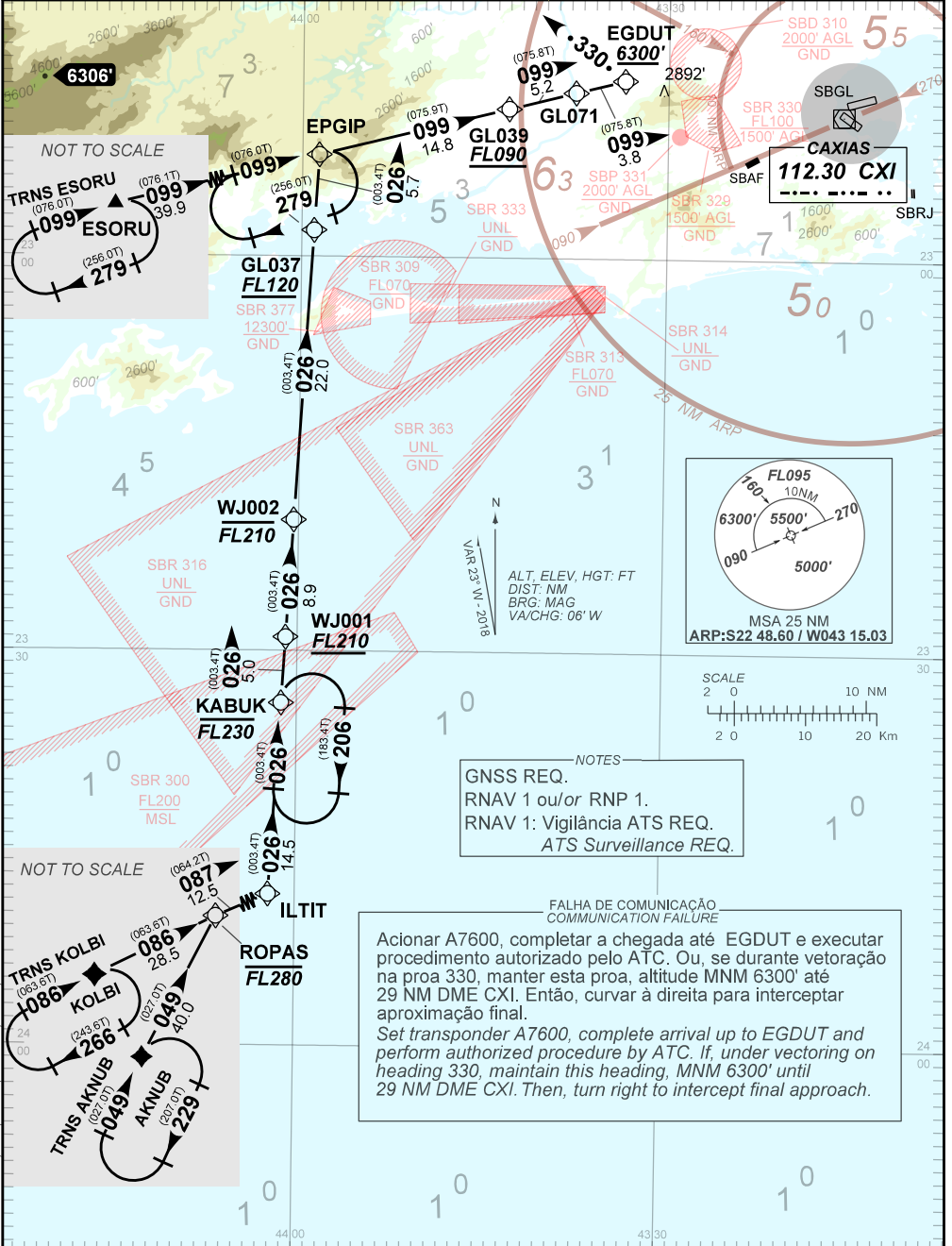
RIO DE JANEIRO / Galeão - Antônio Carlos Jobim, INTL (SBGL)

RWY 15

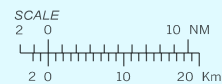
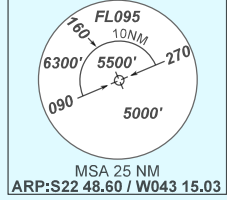
RNAV EPGIP 2A

AD ELEV: 28'

TA 7000'	D-ATIS 127.60	ACC CURITIBA 127.05 128.40 121.50	APP SAO PAULO 121.35 123.90 124.70 125.60 121.50	APP RIO 119.00 119.35 120.55 121.25 124.95 125.95 128.90 129.80 134.40 121.50	TWR GALEAO 118.00 118.20 121.50
----------	---------------	--------------------------------------	---	--	------------------------------------



CHANGES: DEC. EAC. IDENT. LAYOUT. PROC. TEXTUAL DESCRIPTION.



**NOTES**  
 GNSS REQ.  
 RNAV 1 ou/ou RNP 1.  
 RNAV 1: Vigilância ATS REQ.  
 ATS Surveillance REQ.

**FALHA DE COMUNICAÇÃO  
 COMMUNICATION FAILURE**  
 Acionar A7600, completar a chegada até EGDUT e executar procedimento autorizado pelo ATC. Ou, se durante vetoração na proa 330, manter esta proa, altitude MNM 6300' até 29 NM DME CXI. Então, curvar à direita para interceptar aproximação final.  
 Set transponder A7600, complete arrival up to EGDUT and perform authorized procedure by ATC. If, under vectoring on heading 330, maintain this heading, MNM 6300' until 29 NM DME CXI. Then, turn right to intercept final approach.