

**INSTRUMENT APPROACH  
CHART (IAC)**

**GUARATINGUETÁ / Guaratinguetá (SBGW)**

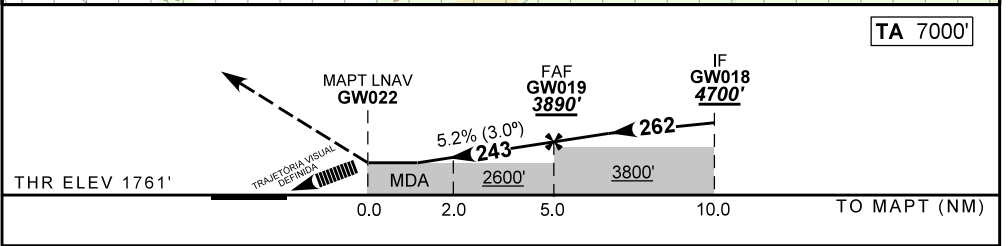
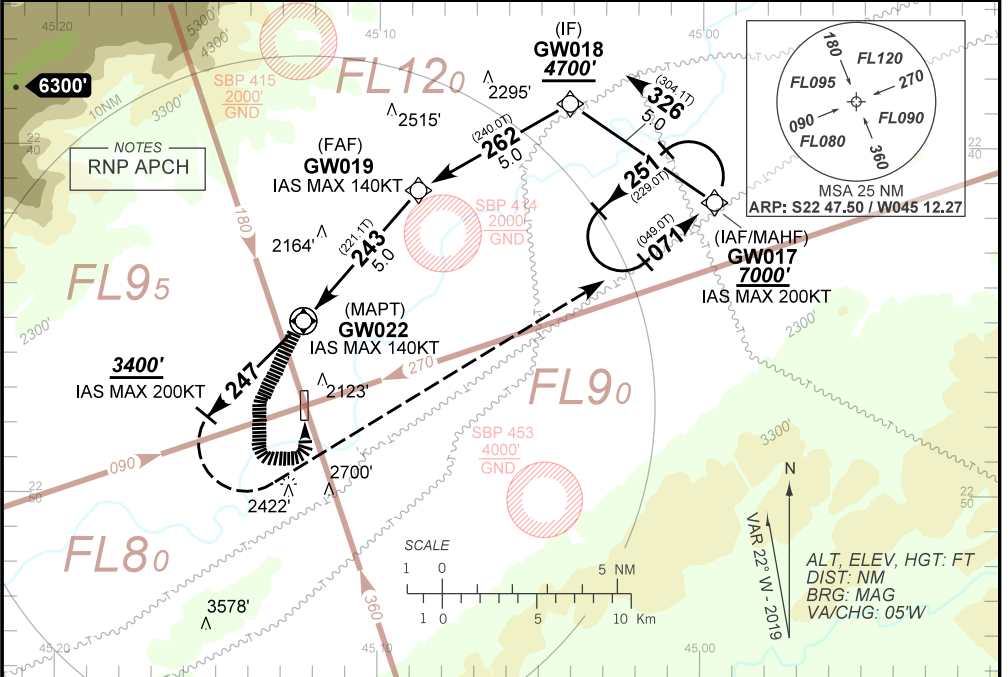
**AD ELEV: 1762'**

**RNAV(GNSS) B RWY 02**

<b>ATIS</b> NIL	<b>APP GUARÁ</b> 120.15	<b>TWR GUARÁ</b> 118.15	<b>GNDC</b> NIL
<b>N/A</b>	<b>FINAL CRS</b> 243°	<b>FAF:</b> 3890'	<b>N/A</b>

APCH Perdida: Subir para **7000'**. Manter rumo **247** até cruzar **3400'**. Então, curvar à ESQUERDA direto GW017 para espera.  
 Missed APCH: Climb to **7000'**. Maintain course **247** until passing **3400'**. Then, LEFT turn direct to GW017 for holding.

RMK: NIL.



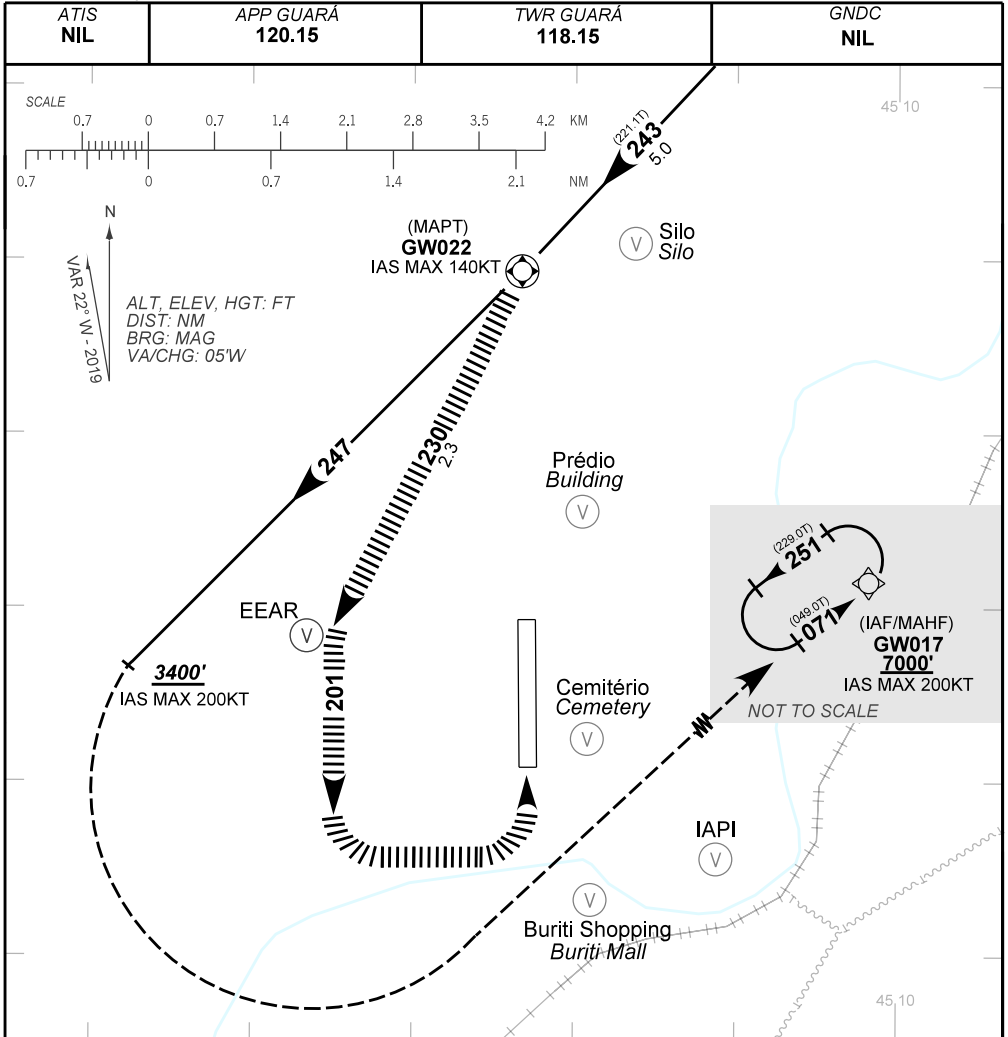
MAPT GW022	1.0	2.0	3.0	4.0	GW019	KT	090	110	130	150	170	190
ALT	2400	2718	3036	3355	3673	FPM	500	600	700	800	NA	NA
(HGT)	640	957	1275	1594	1912	FAF-MAPT	NA					

STRAIGHT-IN	CAT	A	B	C	D	E
	MDA / (OCH)	NA				
LNAV	ALS/NO ALS/ RVR ALS (m)	NA				
	MDA / (OCH)	2400' / (640')				
CIRCLING	MDA / (OCH)	2400' / (640')				
	VIS (m)	1900	2800	3700	NA	

CHANGES: VIS.

AD ELEV: 1762'

RNAV(GNSS) B RWY 02



**TRAJETÓRIA VISUAL DEFINIDA RWY 02  
VISUAL PRESCRIBED TRACK RWY 02**

- 1) O procedimento deverá ser autorizado pelo APP GUARÁ durante a aproximação final e aproximação perdida.  
*Procedure must be authorized by GUARÁ APP on final and missed approaches.*
- 2) O piloto deverá estar em contato visual e prover sua própria separação com as referências visuais:  
*The pilot should have visual contact and provide his own separation with the visual references: Silo (S22 44.90 W045 11.62), Prédio (S22 46.44 W045 11.95) e a EEAR (S22:47.16 W045:13.66).*  
*The pilot should have visual contact and provide his own separation with the visual references: Silo (S22 44.90 W045 11.62), Building (S22 46.44 W045 11.95) and EEAR (S22:47.16 W045:13.66).*
- 3) Em caso de perda de referência visual, durante a manobra para circular: subir imediatamente para 7000' direto GW017.  
*In case of visual reference loss during the circling maneuvering: climb immediately to 7000' direct to GW017.*
- 4) Observar AIC sobre circulação visual na Terminal São Paulo.  
*See AIC about visual flight in São Paulo Terminal Area.*

CHANGES: VIS