

INSTRUMENT APPROACH  
CHART (IAC)

Vitória da Conquista / Glauber de Andrade Rocha (SSVC)

RNAV(GNSS) RWY 15

AD ELEV: 2934'

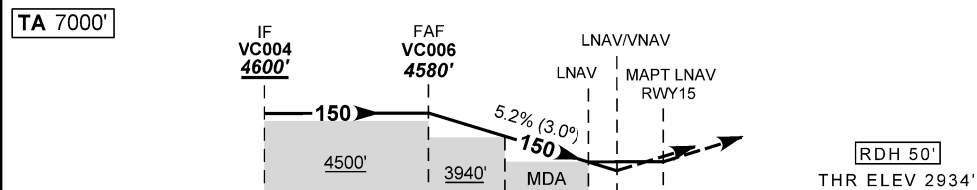
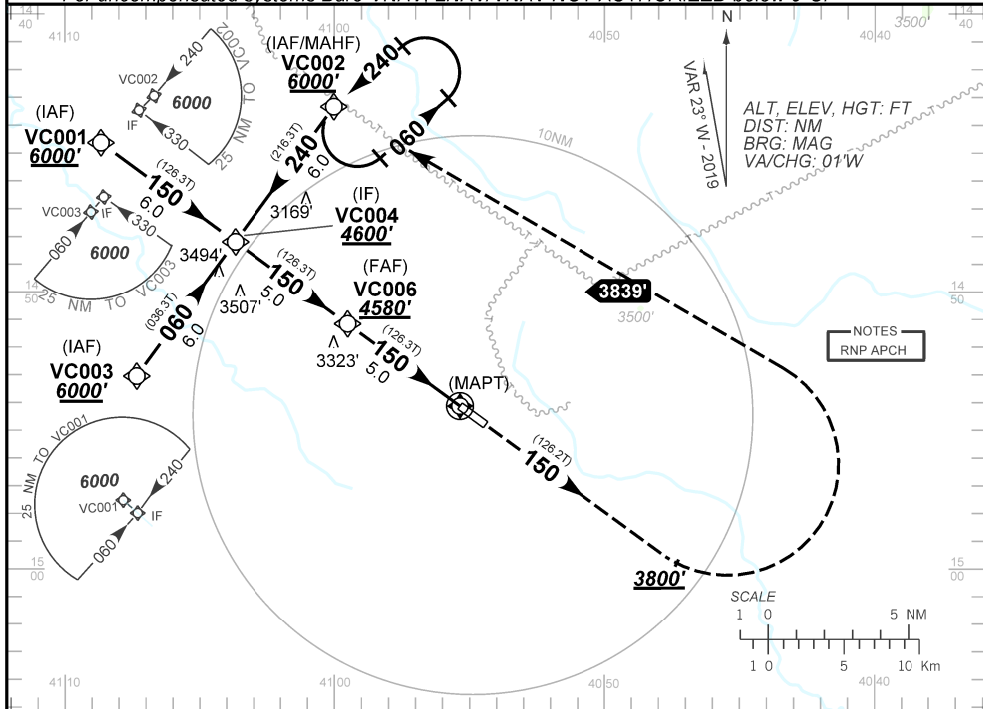
ATIS NIL	APP NIL	AFIS CONQUISTA 130.30		GNDC NIL
N/A	FINAL CRS 150°	FAF 4580'	LNAV/VNAV DA / (OCH): 3184' / (250')	LNAV MDA / (OCH): 3244' (310')

APCH Perdida: Subir para **6000'** no rumo **150°**. Após **8300'**, curvar à ESQUERDA direto VC002 para espera.

Missed APCH: Climb to **6000'** on course **150°**. After **8300'**, turn LEFT direct to VC002 for holding.

RMK: Para sistemas não compensados Baro-VNAV, LNAV/VNAV NÃO AUTORIZADO abaixo de 0°C.

For uncompensated systems Baro-VNAV, LNAV/VNAV NOT AUTHORIZED below 0°C.



TO THR 15 (NM) 10.0 5.0 3.0 1.3 0.8 0.0

VC006	4.0	3.0	2.0	1.0	RWY15	KT	090	110	130	150	170	190
4580	4532	3940	3620	3300	ALT	FPM	500	600	700	800	900	NA
1646	1598	1006	686	366	(HGT)	FAF-MAPT	NA					

STRAIGHT-IN	CAT	A	B	C	D	E	
	DA / OCH	3184' / (250')					NA
LNAV/VNAV	ALS/NO ALS/ RVR ALS (m)	NIL / 1300 / NIL					
	MDA / OCH / TETO	3250' / (310')					
LNAV	ALS/NO ALS/RVR ALS (m)	NIL / 1400 / NIL					
	MDA / OCH	NA					
CIRCLING	VIS (m)	NA					

CHANGES: NEW CHART.

SUP N152/19 18 JUL 19 TIL 12 SEP 19

DEPARTAMENTO DE CONTROLE DO ESPAÇO AÉREO

SBVC\_IAC\_00C 1/1  
IAC RNAV(GNSS) RWY 15