

**INSTRUMENT APPROACH  
CHART (IAC)**

**CUIABÁ / Marechal Rondon, INTL (SBCY)**

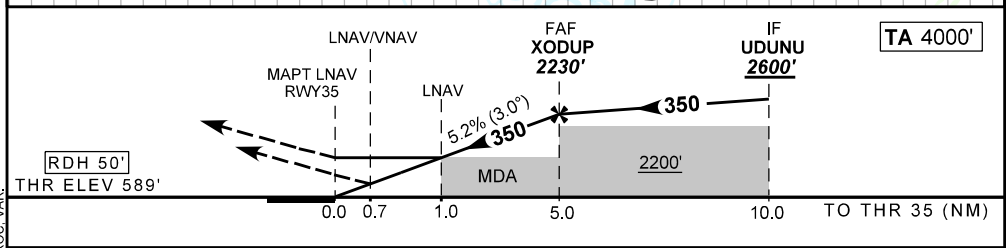
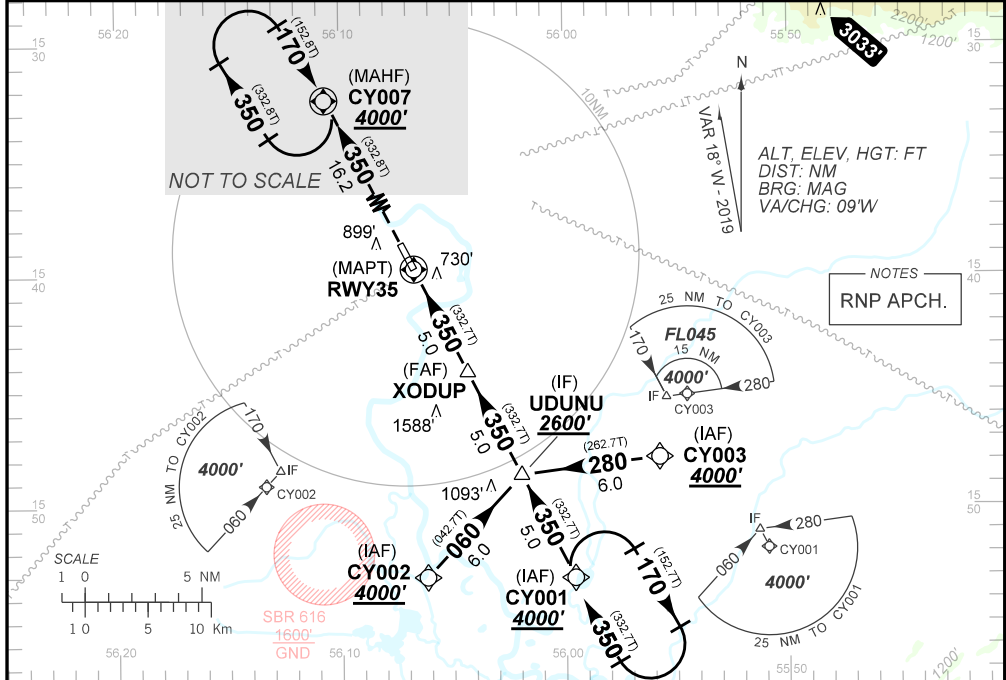
**AD ELEV: 617'**

**RNAV(GNSS) X RWY 35**

D-ATIS <b>127.85</b>	APP CUIABÁ <b>119.40 120.35 128.90 121.50</b>	TWR CUIABÁ <b>118.10 121.50</b>	GNDC CUIABÁ <b>121.90</b>
N/A	FINAL CRS <b>350°</b>	FAF: <b>2230'</b>	LNAV/VNAV DA / (OCH): <b>877' / (290')</b>
			LNAV MDA / (OCH): <b>950' / (370')</b>

APCH Perdida: Subir para **4000'**. Manter rumo **350** até CY007 para espera.  
Missed APCH: Climb up to **4000'**. Maintain course **350** to CY007 for holding.

RMK: 1) Para sistemas não compensados, LNAV/VNAV não autorizado abaixo de 0°C e acima de 55°C.  
1) For uncompensated systems, LNAV/VNAV procedure not authorized below 0°C and above 55°C.



RWY35	1.0	2.0	3.0	4.0	XODUP		KT	090	110	130	150	170	190
ALT	950	1276	1595	1913	2230		FPM	500	600	700	800	900	NA
(HGT)	370	687	1006	1324	1641		FAF-MAPT	NA					

STRAIGHT-IN	CAT	A	B	C	D	E	
	DA / (OCH)	877' / (290')					NA
LNAV/VNAV	ALS/NO ALS/ RVR ALS (m)	NIL / 1400 / NIL					
	MDA / (OCH)	950' / (370')					
LNAV	ALS/NO ALS/ RVR ALS (m)	NIL / 1600 / NIL		NIL / 1700 / NIL			
CIRCLING	MDA / (OCH)	NA					
	VIS (m)						

CHANGES: DA, IDENT, LAYOUT, MDA, PROC, VAR.