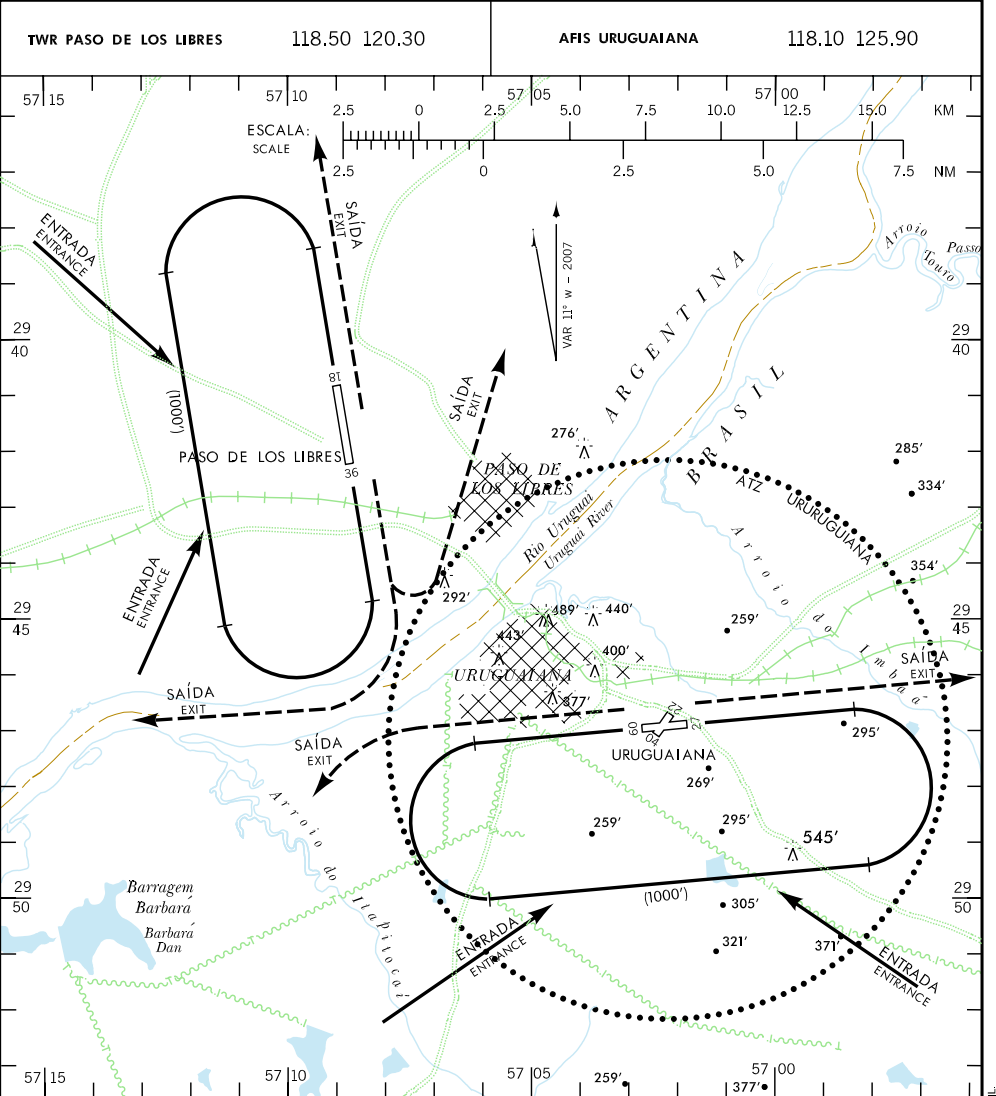


VAC - SBUG WGS-84

RWY 09/27 E / AND 04/22

ELEV 256'



RMK:

1 - AS AERONAVES NO CIRCUITO DE TRÁFEGO NÃO DEVERÃO ULTRAPASSAR O RIO URUGUAI.

1 - AIRCRAFT IN THE TRAFFIC PATTERN MUST NOT GO BEYOND URUGUAI RIVER.