

INSTRUMENT APPROACH
CHART (IAC)

VILHENA / Vilhena (SBVH)

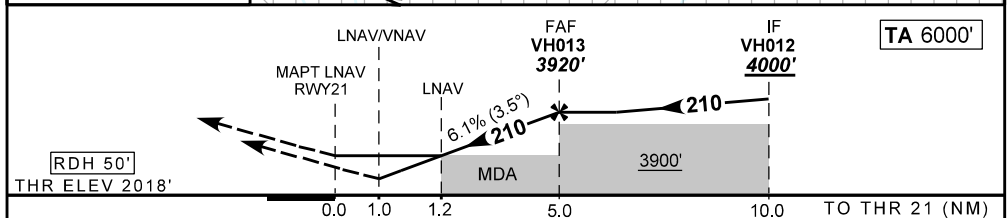
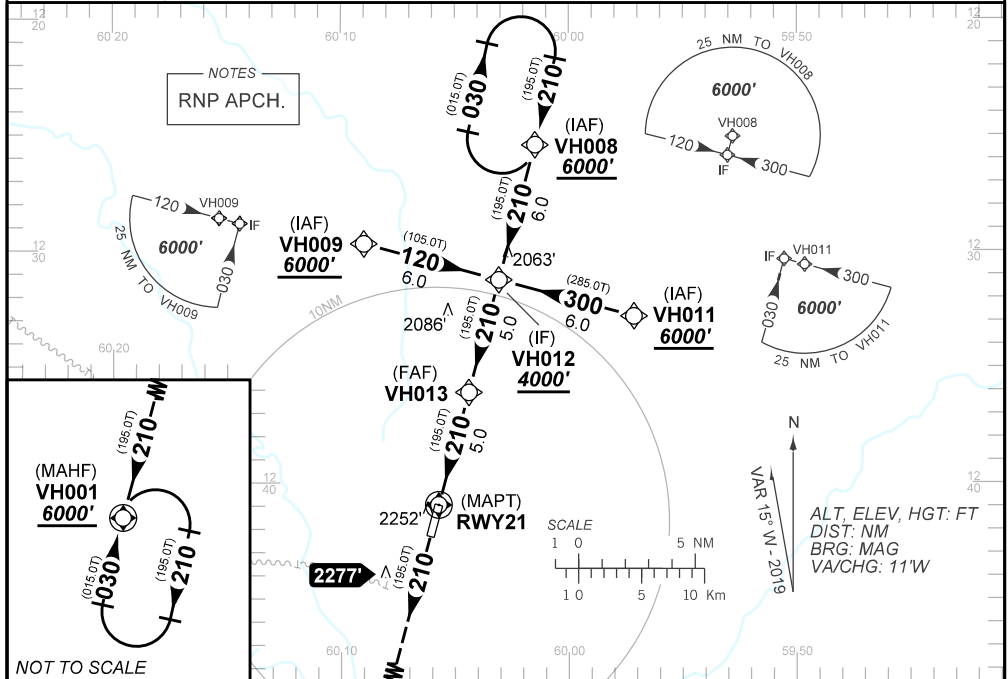
AD ELEV: 2018'

RNAV(GNSS) Y RWY 21

ATIS NIL	ACC AMAZÔNICO 123.55 128.30 123.85 128.05 121.50	R-AFIS VILHENA 125.90	GNDC VILHENA NIL
N/A	FINAL CRS 210°	FAF: 3920'	LNAV/VNAV DA / (OCH): 2451' / (433')
		LNAV MDA / (OCH): 2500' / (490')	

APCH Perdida: Subir para **6000'**. Manter rumo **210** até VH001 para espera.
Missed APCH: Climb to **6000'**. Maintain course **210** until VH001 for holding.

RMK: Para sistemas não compensados, LNAV/VNAV não autorizado abaixo de 0°C e acima de 50°C.
For uncompensated systems, LNAV/VNAV procedure not authorized below 0°C and above 50°C.



RWY21	1.2	2.0	3.0	4.0	VH013	KT	090	110	130	150	170	190
ALT	2500	2705	3183	3555	3920	FPM	560	690	810	930	1060	1180
(HGT)	490	687	1165	1537	1902	FAF-MAPT	NA					

STRAIGHT-IN	CAT	A	B	C	D	E
LNAV/VNAV	DA / (OCH)	2451' / (433')				
	ALS/NO ALS/ RVR ALS (m)	NIL / 2000 / NIL				
LNAV	MDA / (OCH)	2500' / (490')				
	ALS/NO ALS/ RVR ALS (m)	NIL / 2000 / NIL		NIL / 2300 / NIL		
CIRCLING	MDA / (OCH)	NA				
	VIS (m)					

CHANGES: NEW CHART.