

CARTA DE APROXIMAÇÃO
POR INSTRUMENTOS (IAC)
INSTRUMENT APPROACH CHART (IAC)

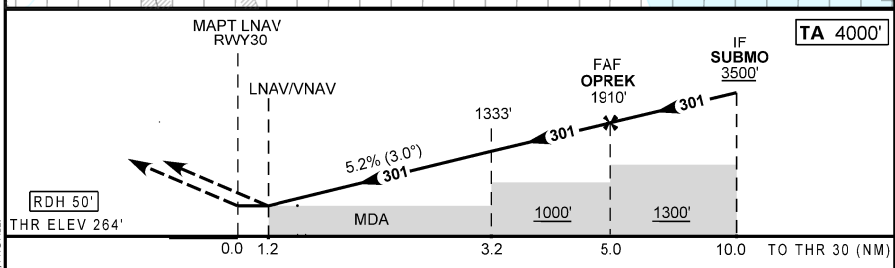
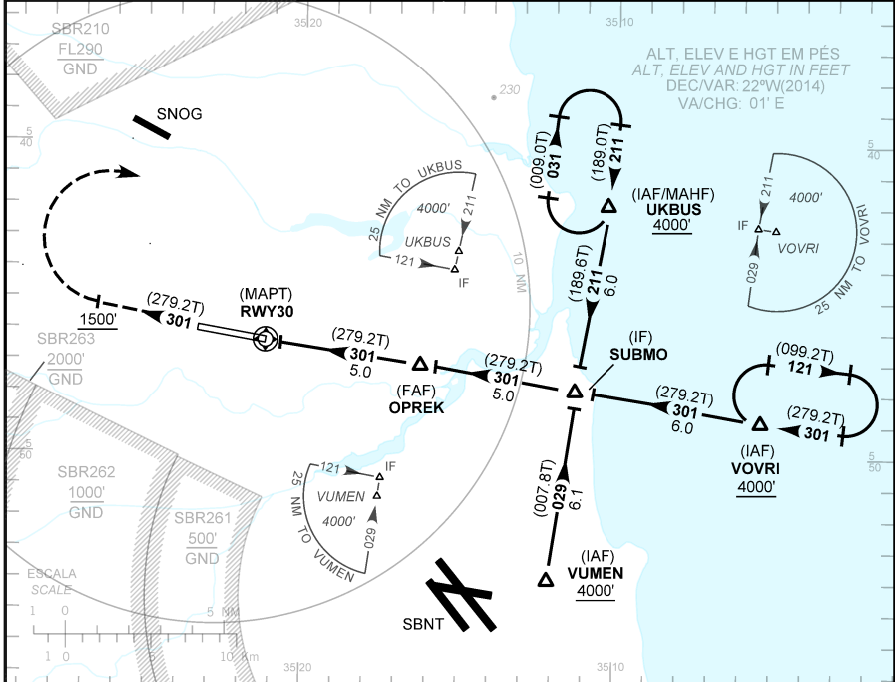
SÃO GONÇALO DO AMARANTE / Gov. Aluizio Alves, INTL (SBSG)

RNAV(GNSS) RWY 30

AD ELEV: 273'	ATIS 127.60	APP NATAL 119.30 119.65 121.50	TWR SÃO GONÇALO 118.20 118.85 121.50	GNDC SÃO GONÇALO 121.70
---------------	----------------	-----------------------------------	---	----------------------------

RMK: Procedimento BARO-VNAV não autorizado abaixo de 0°C.
RMK: BARO-VNAV procedure not authorized below 0°C.

Aproximação Perdida: 1) Subir para 4000', gradiente MNM 5%. Manter rumo 301 até 1500ft. Após, curvar à direita para espera em UKBUS. 2) IAS MAX 220kt.
Missed Approach: 1) Climb to 4000', MNM gradient 5%. Maintain course 301 until 1500ft. Then, turn right for holding at UKBUS. 2) MAX IAS 220kt.



RWY30	0.6	1.0	2.0	3.0	4.0	OPREK	KT	090	110	130	150	170	190
ALT	510	638	956	1274	1592	1910	FPM	500	600	700	800	900	1000
(HGT)	246	365	683	1001	1319	1637	FAF-MAPT	NIL					

POUSO DIRETO STRAIGHT-IN	CAT	A	B	C	D	E
	DA / OCH / TETO	658 / 394 / 400				
LNNAV / VNAV	ALS/NO ALS/ RVR ALS (m)	NIL / 1800 / NIL				
	MDA / OCH / TETO	658 / 394 / 400				
LNNAV	ALS/NO ALS/RVR ALS (m)	NIL / 1800 / NIL				
	MDA / OCH / TETO	NA				
CIRCULAR TO CIRCLE	VIS (m)	NA				

MODIFICAÇÕES / CHANGES: DIST. MDA, PERFIL / PROFILE