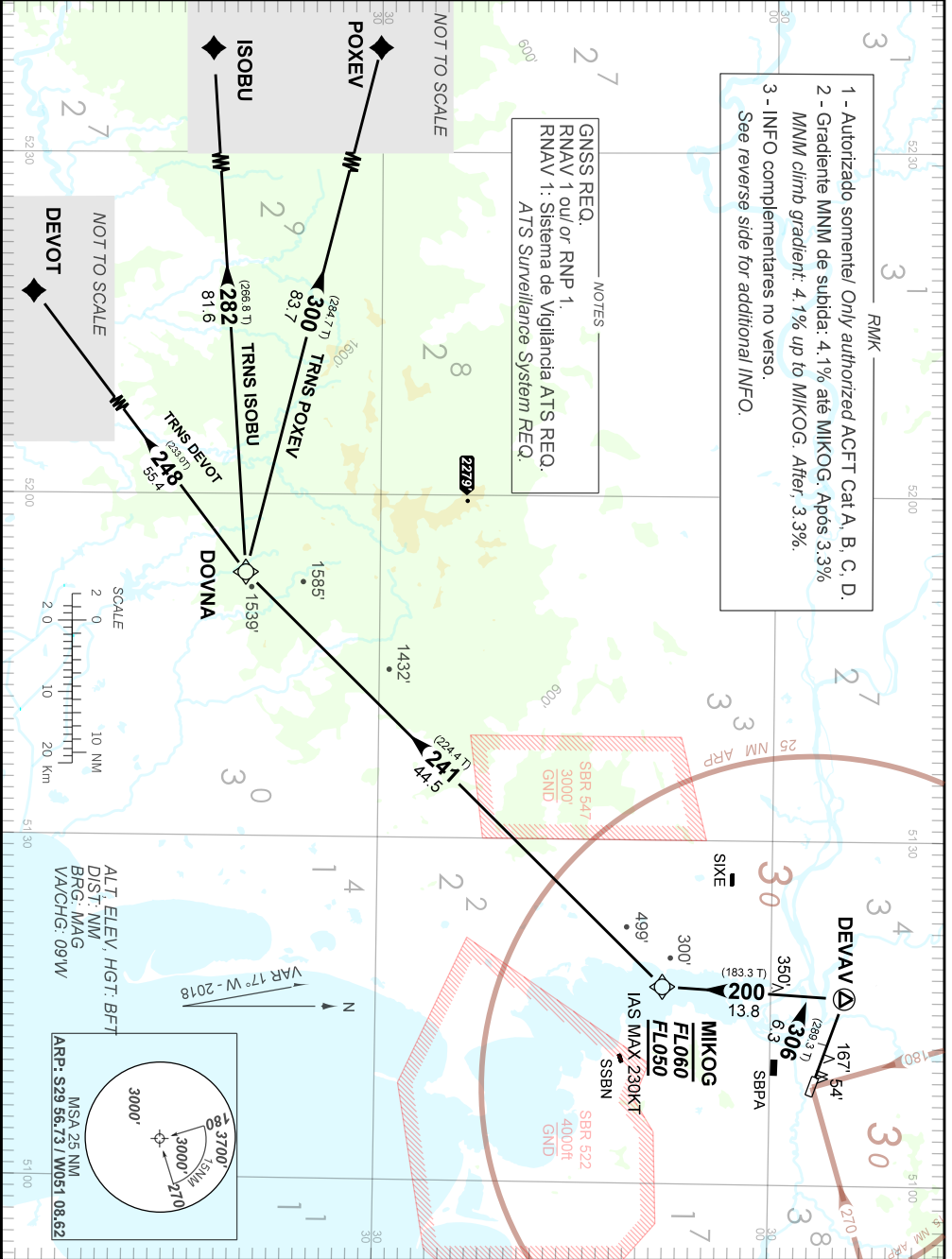


AD ELEV: 26'

| | | | |
|----------|--|---|--|
| TA 4000' | TWR CANOAS 118.50 122.80 (MIL) 121.50 | APP PALEGRE 119.00 120.10 120.55 128.90 121.50 | ACC CURITIBA 135.90 123.725 126.75 127.40 121.50 |
|----------|--|---|--|



CHANGES: IDENT. RWY. RMK.

RMK

- 4 - Obstáculos próximos não considerados para o cálculo do gradiente de subida:
Close-in obstacles not taken into account on climb gradient calculation
Árvores / Trees : a partir de / from THR13, AZM344, DIST 150m, ELEV 54'.
- 5 - Gradiente de subida superior 3.3% devido à restrição de espaço aéreo.
Climb gradient greater than 3.3% due to air space restrictions only.