

INSTRUMENT APPROACH
CHART (IAC)

RIO DE JANEIRO / Galeão - Antônio Carlos Jobim, INTL (SBGL)

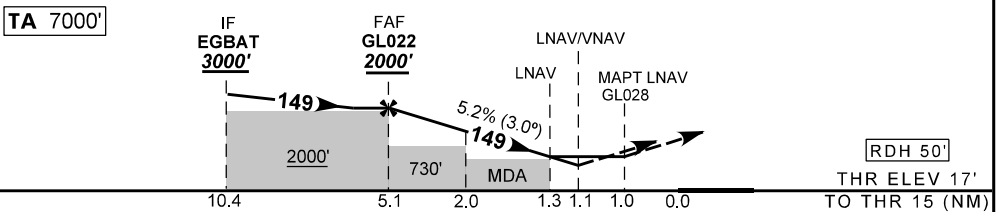
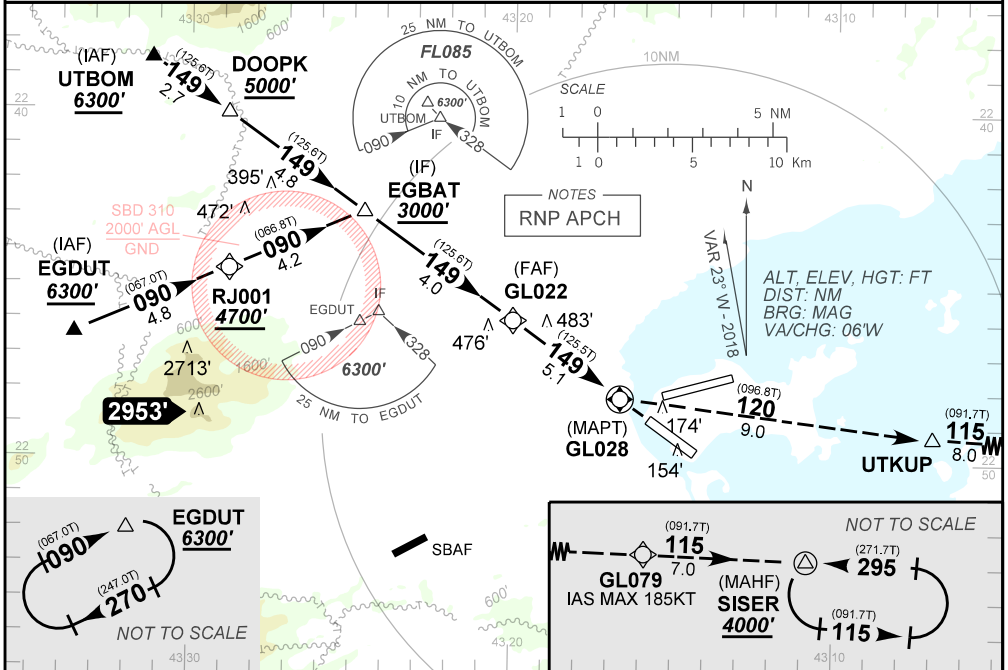
RNAV (GNSS) Z RWY 15

AD ELEV: 28'

D-ATIS 127.60	126.20 133.30 125.95 128.90	APP RIO 134.40 121.25 129.80 119.35 121.50	TWR GALEÃO 118.00 118.20 121.50	GNDC GALEÃO 128.35 121.65
N/A	FINAL CRS 149°	FAF 2000'	LNAV/VNAV DA / (OCH): 331' / (314')	LNAV MDA / (OCH): 420' / (410')

APCH Perdida: 1) Subir para **4000'**. Curvar à ESQUERDA rumo **120** até UTKUP. Curvar à ESQUERDA rumo **115** até GL079. Manter rumo **115** até SISER para espera.
Missed APCH: 1) Climb to **4000'**. Turn LEFT course **120** up to UTKUP. Turn LEFT course **115** up to GL079. Maintain course **115** up to SISER for holding.

RMK: 1) Para sistemas não compensados Baro-VNAV, LNAV/VNAV NÃO AUTORIZADO abaixo de 0°C ou acima de 42°C.
1) For uncompensated systems Baro-VNAV, LNAV/VNAV NOT AUTHORIZED below 0°C or above 42°C.



GL022	4.0	3.0	2.0	1.3	RWY15	KT	090	110	130	150	170	190
2000	1341	1023	704	420	ALT	FPM	500	600	700	800	900	NA
1983	1325	1007	688	404	(HGT)	FAF-MAPT	NA					

STRAIGHT-IN	CAT	A	B	C	D	E
	DA / (OCH)	331' / (314')				
LNAV/VNAV	ALS/NO ALS/ RVR ALS (m)	800/ 1600 / 700				
	MDA / (OCH)	420' / (410')				
LNAV	ALS/NO ALS/ RVR ALS (m)	800/ 1600 / 700			1200 / 1900 / 1100	
	MDA / (OCH)	NA				
CIRCLING	MDA / (OCH)	NA				
	VIS (m)	NA				

CHANGES: THR: