

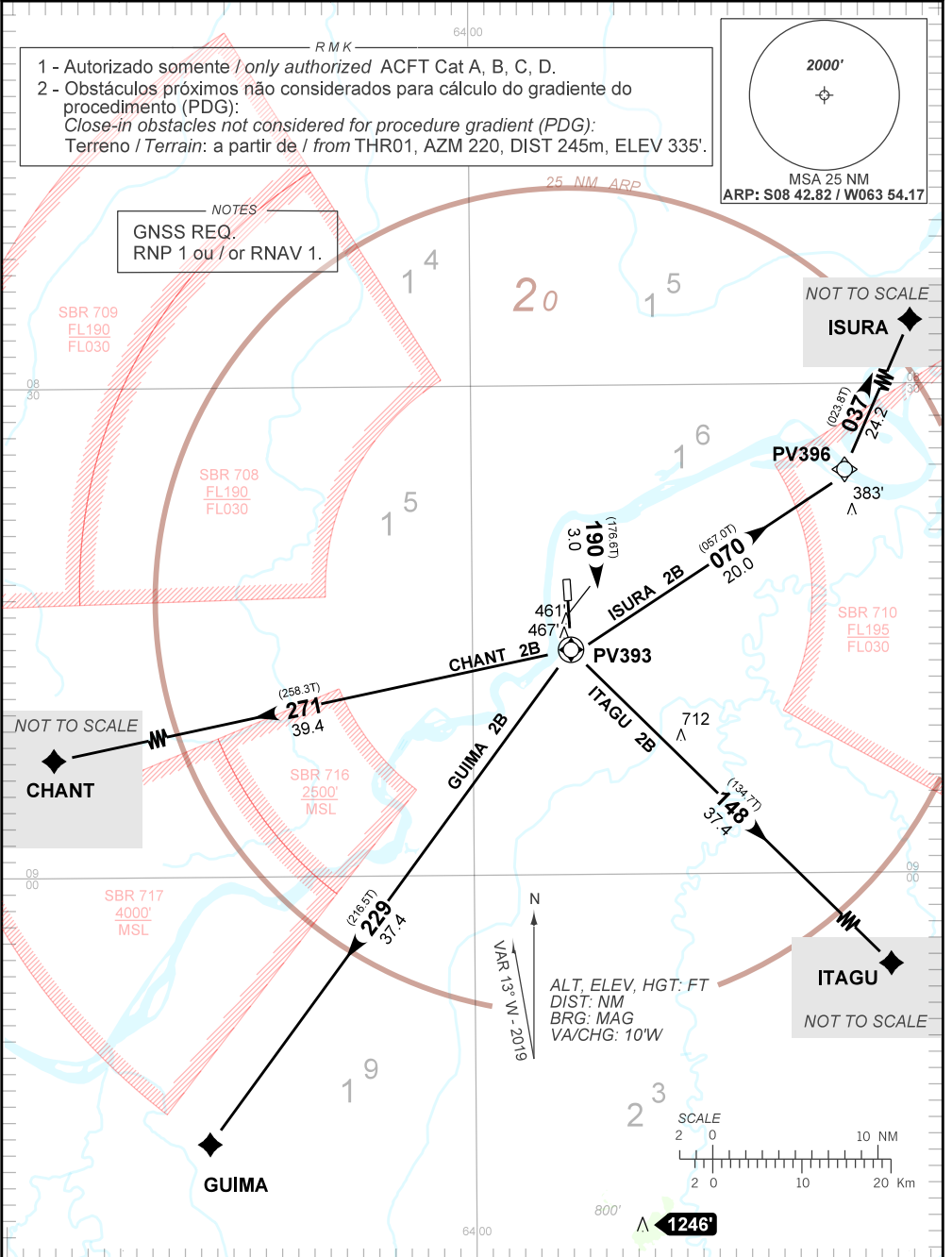
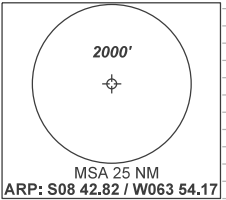
AD ELEV: 295'

RNAV CHANT 2B - GUIMA 2B - ISURA 2B - ITAGU 2B

TA 3000'	TWR PORTO VELHO 118.20 121.50	APP PORTO VELHO 120.25 120.80	ACC AMAZÔNICO 125.85 128.30 126.50 135.25 121.50
-----------------	--	--	---

RMK
1 - Autorizado somente / only authorized ACFT Cat A, B, C, D.
2 - Obstáculos próximos não considerados para cálculo do gradiente do procedimento (PDG):
Close-in obstacles not considered for procedure gradient (PDG):
Terreno / Terrain: a partir de / from THR01, AZM 220, DIST 245m, ELEV 335'.

NOTES
GNSS REQ.
RNP 1 ou / or RNAV 1.



CHANGES: DEC. LAYOUT. RMK.