

INSTRUMENT APPROACH
CHART (IAC)

FLORIANÓPOLIS / Hercílio Luz, INTL (SBFL)

RNAV(GNSS) Z RWY 32

AD ELEV: 17'

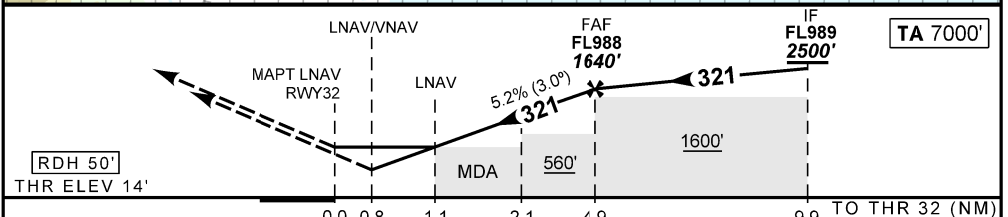
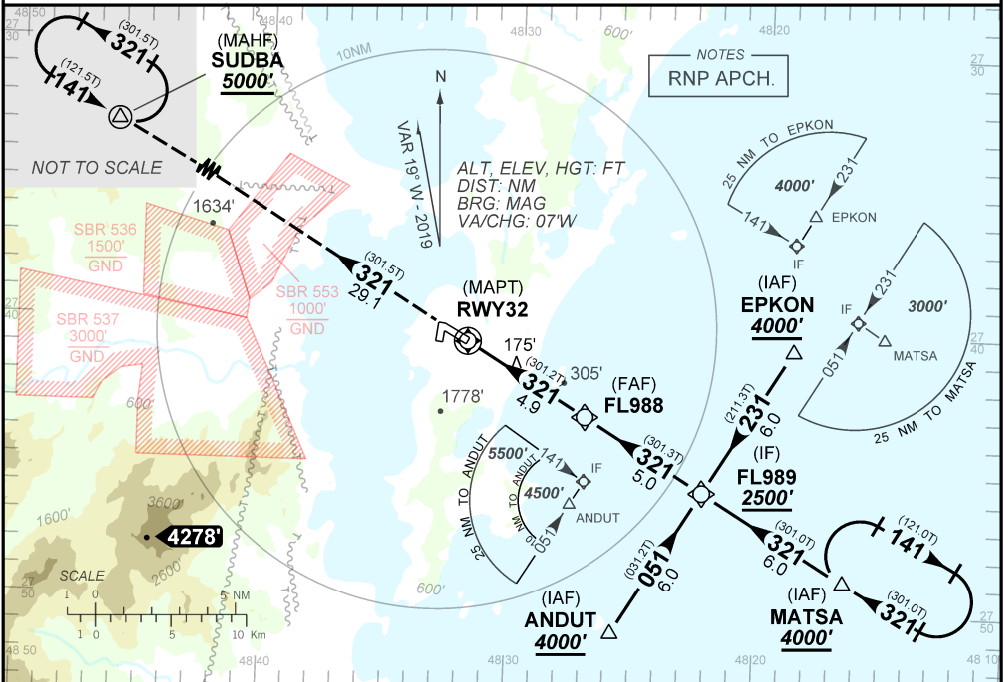
D-ATIS 127.45	APP FLORIANÓPOLIS 119.50 119.65 128.95 129.45 129.60 121.50	TWR FLORIANÓPOLIS 118.70 122.80 (MIL) 121.50	GNDC FLORIANÓPOLIS 121.70
N/A	FINAL CRS 321°	FAF 1640'	LNAV/VNAV DA / (OCH): 330' / (320')
		LNAV MDA / (OCH): 430' / (420')	

APCH Perdida: Subir para **5000'** rumo **321°** para espera em SUDBA.

Missed APCH: Climb to **5000'** on course **321°** to SUDBA for holding.

RMK: 1) Para sistemas BARO-VNAV não compensados, procedimento LNAV/VNAV não autorizado abaixo de -10°C.

1) For uncompensated systems BARO-VNAV, LNAV/VNAV procedure not authorized below -10°C.



RWY 32	1.1	2.1	3.0	4.0	FL988	KT	090	110	130	150	170	190
ALT	430	733	1019	1338	1640	FPM	500	600	700	800	900	NA
(HGT)	416	719	1005	1324	1626	FAF-MAPT	NA					

STRAIGHT-IN	CAT	A	B	C	D	E
	DA / (OCH)	330' / (320')				NA
LNAV/VNAV	ALS / NO ALS / RVR ALS (m)	NIL / 1400 / NIL				
LNAV	MDA / (OCH)	430' / (420')				
CIRCLING	MDA / (OCH)	NA				
	VIS (m)					

CHANGES: DEC. MINM. THR.