

CARTA DE APROXIMAÇÃO
POR INSTRUMENTOS (IAC)
INSTRUMENT APPROACH CHART (IAC)

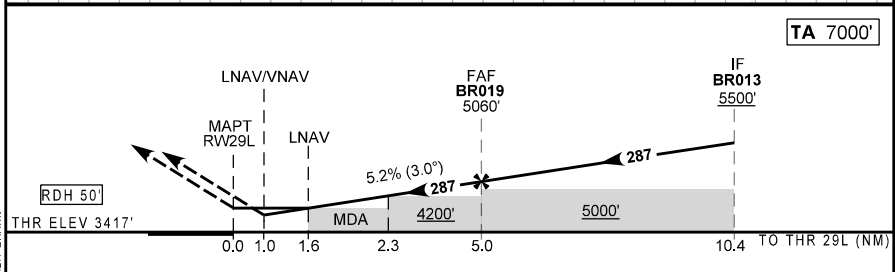
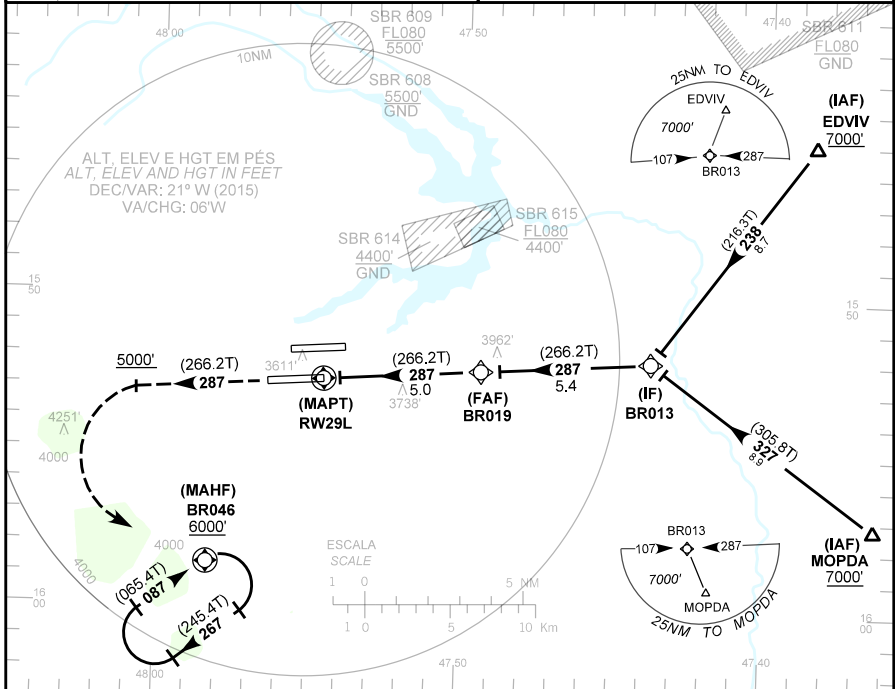
BRASÍLIA / Pres. Juscelino Kubitschek, INTL (SBBR)

RNAV(GNSS) Z RWY 29L

AD ELEV: 3497'	ATIS 127.80	APP BRASÍLIA 119.20 119.50 119.70 120.00 129.60 121.50	TWR BRASÍLIA 118,10 118,45 121,50	GNDC BRASÍLIA 121,80
----------------	----------------	---	--------------------------------------	-------------------------

RMK: 1) Procedimento BARO-VNAV não autorizado abaixo de 0°C.
 2) BARO-VNAV procedure not authorized below 0°C.
 3) Observar compulsoriamente seção CAR da AIP-MAP.
 4) CAR section of AIP-MAP shall be observed.
 5) RNAV 1 ou RNP 1.
 6) RNAV 1 or RNP 1.

Aproximação Perdida: 1) Subir para 6000' no rumo 287. Após 5000', curvar à esquerda para espera em BR046. 2) IAS MAX 230KT.
 Missed Approach: 1) Climb to 6000' course 287. After 5000', turn left direct BR046 for holding. 2) MAX IAS 230KT



RWY29L	1.0	2.0	3.0	4.0	BR019		KT	90	110	130	150	170	190
ALT	3797	4104	4422	4741	5060		FPM	500	600	700	800	900	1000
(HGT)	380	687	1005	1324	1642		FAF-MAPT 5NM	NIL					
POUSO DIRETO / STRAIGHT-IN	CAT		A		B		C		D		E		
LNVA / VNAV	DA / OCH / TETO						3797 / 380 / 400						
	ALS/NO ALS/RVR ALS (m)						1000 / 1700 / NIL						
LNVA	MDA / OCH / TETO						3990 / 570 / 600						
	ALS/NO ALS/RVR ALS (m)		1000 / 1700 / NIL				1900 / 2600 / NIL						
CIRCULAR TO CIRCL	MDA / OCH / TETO						NA						
	VIS (m)												

MODIFICAÇÕES / CHANGES: CARTA NOVA / NEW CHART.