

**INSTRUMENT APPROACH  
CHART (IAC)**

**PALMAS / Brigadeiro Lysias Rodrigues (SBPJ)**

**AD ELEV: 774'**

**RNAV(GNSS) RWY 14**

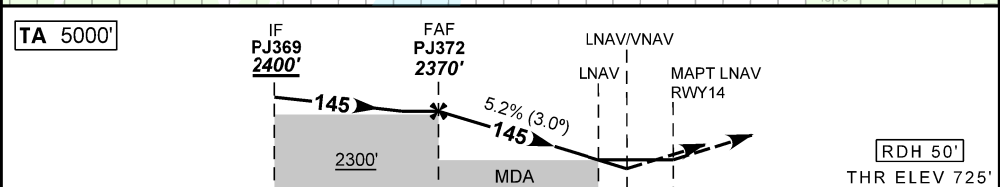
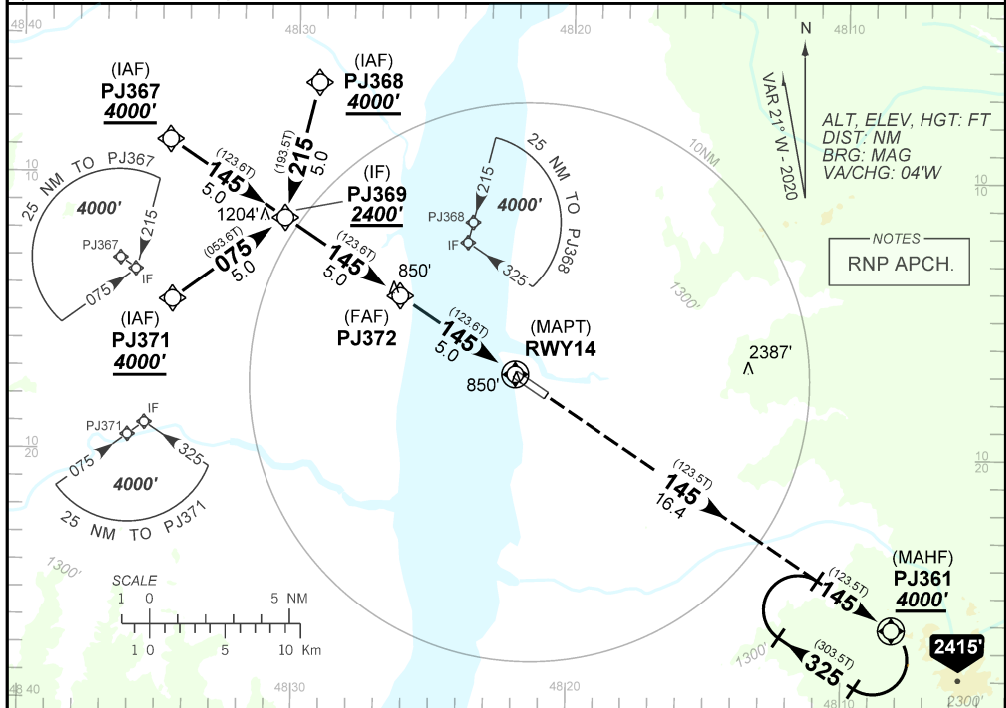
|                    |                                    |                                    |  |
|--------------------|------------------------------------|------------------------------------|--|
| ATIS<br><b>NIL</b> | APP PALMAS<br><b>119.00 121.50</b> | TWR PALMAS<br><b>118.00 121.50</b> | GNDC<br><b>NIL</b>                             |
| N/A                | FINAL CRS<br><b>145°</b>           | FAF<br><b>2370'</b>                | LNAV/VNAV<br>DA / (OCH): <b>1011' / (286')</b> |
|                    |                                    |                                    | LNAV<br>MDA / (OCH): <b>1100' / (380')</b>     |

APCH Perdida: Subir para **4000'**. Manter rumo **145°** até PJ361 para espera.

Missed APCH: Climb to **4000'**. Maintain course **145°** until PJ361 for holding.

RMK: 1) Para sistemas não compensados Baro-VNAV, LNAV/VNAV NÃO AUTORIZADO abaixo de -20°C ou acima de 50°C.

1) For uncompensated systems Baro-VNAV, LNAV/VNAV NOT AUTHORIZED below -20°C or above 50°C.



TO THR 14 (NM) 10.0 5.0 1.0 0.7 0.0

|       |      |      |      |      |      |       |          |     |     |     |     |     |      |
|-------|------|------|------|------|------|-------|----------|-----|-----|-----|-----|-----|------|
| PJ372 | 4.0  | 3.0  | 2.0  | 1.0  | 0.7  | RWY14 | KT       | 090 | 110 | 130 | 150 | 170 | 190  |
| 2370  | 2049 | 1730 | 1412 | 1100 | 1011 | ALT   | FPM      | 500 | 600 | 700 | 800 | 900 | 1000 |
| 1645  | 1324 | 1005 | 687  | 380  | 286  | (HGT) | FAF-MAPT | NA  |     |     |     |     |      |

|             |                         |                  |   |                  |   |   |
|-------------|-------------------------|------------------|---|------------------|---|---|
| STRAIGHT-IN | CAT                     | A                | B | C                | D | E |
|             | DA / (OCH)              | 1011' / (286')   |   |                  |   |   |
| LNAV/VNAV   | ALS/NO ALS/ RVR ALS (m) | NIL / 1400 / NIL |   |                  |   |   |
|             | MDA / (OCH)             | 1100' / (380')   |   |                  |   |   |
| LNAV        | ALS/NO ALS/RVR ALS (m)  | NIL / 1600 / NIL |   | NIL / 1700 / NIL |   |   |
|             | MDA / (OCH)             | NA               |   |                  |   |   |
| CIRCLING    | MDA / (OCH)             | NA               |   |                  |   |   |
|             | VIS (m)                 | NA               |   |                  |   |   |

CHANGES, DEC. LAYOUT, PROC. MDA