

**INSTRUMENT APPROACH CHART (IAC)**

**SÃO PEDRO DA ALDEIA / São Pedro da Aldeia, MIL (SBES)**

**AD ELEV: 61'**

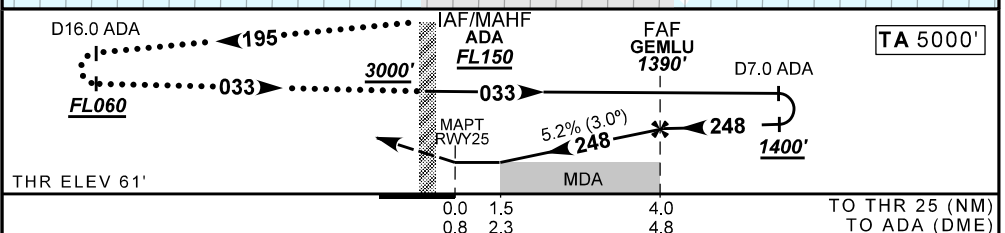
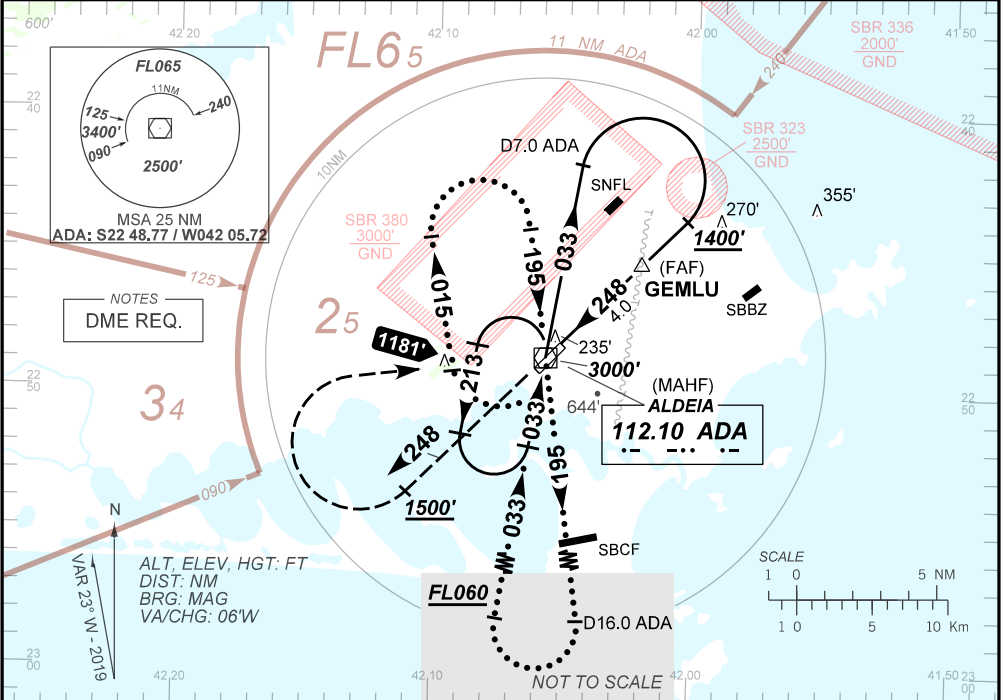
**VOR Y RWY 25**

ATIS NIL	APP ALDEIA 119.45 120.30	TWR ALDEIA 118.30 122.80 (MIL) 121.50	GND ALDEIA 121.90
-------------	-----------------------------	--	----------------------

VOR/DME ADA 112.10 MHz	FINAL CRS 248°	FAF 1390'	N/A	VOR MDA / (OCH): 590' / (528')
---------------------------	-------------------	--------------	-----	-----------------------------------

APCH Perdida: Subir para **3000'**. Manter rumo **248** até cruzar **1500'**. Então, curvar à DIREITA direto VOR Aldeia para espera.  
 Missed APCH: Climb to **3000'**. Maintain course **248** until passing **1500'**. Then, turn RIGHT direct to Aldeia VOR for holding.

RMK: NIL.



RWY25	1.5	2.0	3.0	GEMLU															
ALT (HGT)	590	748	1066	1390															
	528	686	1005	1328															

STRAIGHT-IN	CAT	A	B	C	D	E
	MDA / (OCH)	590' / (528')				
VOR	ALS/SNO ALS/ RVR ALS (m)	NIL / 1600 / NIL			NIL / 2400 / NIL	
	MDA / (OCH)	NA				
CIRCLING	MDA / (OCH)	NA				
	VIS (m)	NA				

CHANGES: LAYOUT, PROC.