

INSTRUMENT APPROACH  
CHART (IAC)

ITUMBIARA / Hidrelétrica de Itumbiara (SBIT)

AD ELEV: 1631'

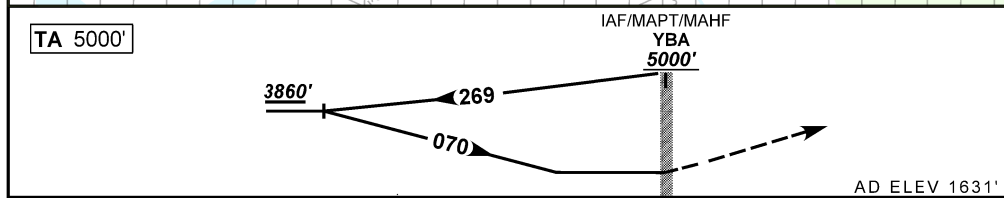
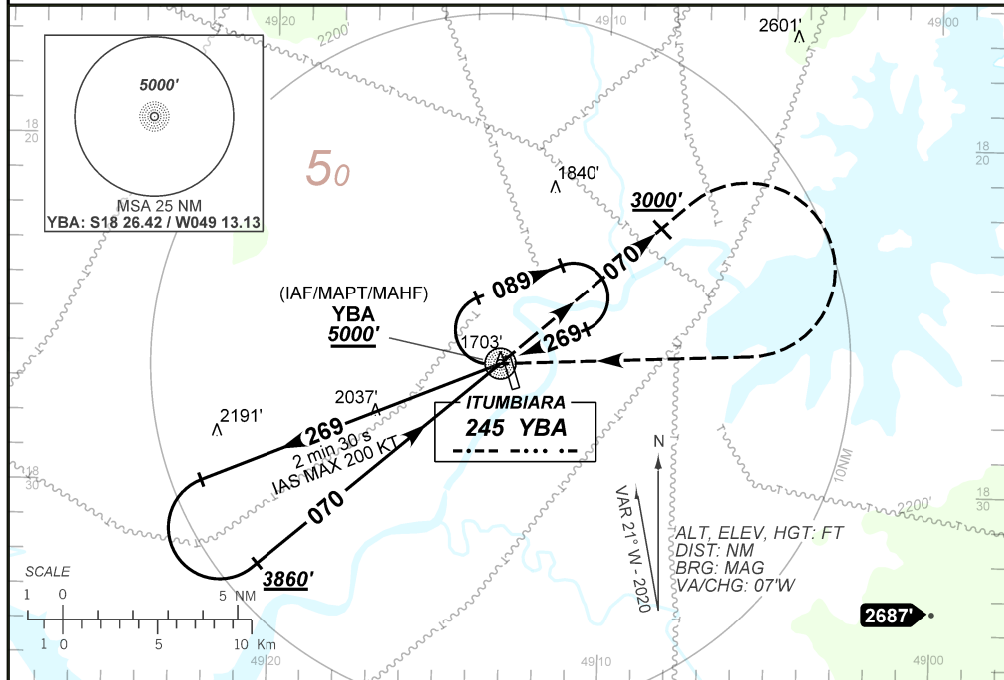
NDB A RWY 18/36

ATIS NIL		APP NIL		AFIS ITUMBIARA 130.30		GNDC NIL	
-------------	--	------------	--	--------------------------	--	-------------	--

NDB YBA 245 kHz	FINAL CRS 070°	N/A	N/A	NDB MDA / (OCH): N/A			
--------------------	-------------------	-----	-----	-------------------------	--	--	--

APCH Perdida: Subir para **5000'**. Manter QDR **070** até **3000'**. Após, curvar à DIREITA direto NDB YBA para espera. IAS MAX 200KT.  
Missed APCH: Climb to **5000'**. Maintain QDR **070** until **3000'**. After, turn RIGHT direct YBA NDB for holding. IAS MAX 200KT.

RMK: CIRCLING: IAS MAX 150KT.



NIL	RWY 18/36	KT	090	110	130	150	170	190
NIL	ALT	FPM	650			NA		
NIL	(HGT)	FAF-MAPT	NA					

STRAIGHT-IN	CAT	A	B	C	D	E
NDB	MDA / (OCH)	NA				NA
	ALS/NO ALS/ RVR ALS (m)					
CIRCLING	MDA / (OCH)	2270' / (640')				NA
	VIS (m)	NIL / 1600 / NIL		NIL / 2800 / NIL		

CHANGES: DEC. LAYOUT. PROC.