

**INSTRUMENT APPROACH
CHART (IAC)**

PRESIDENTE PRUDENTE / Presidente Prudente (SBDN)

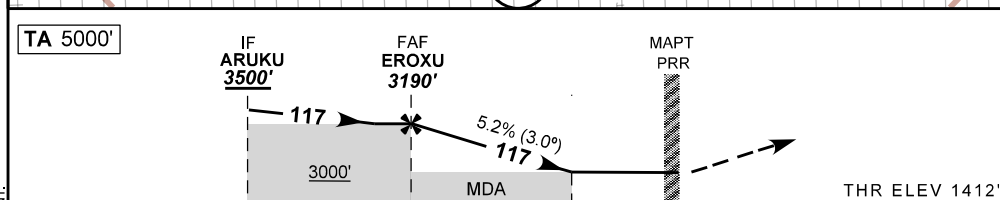
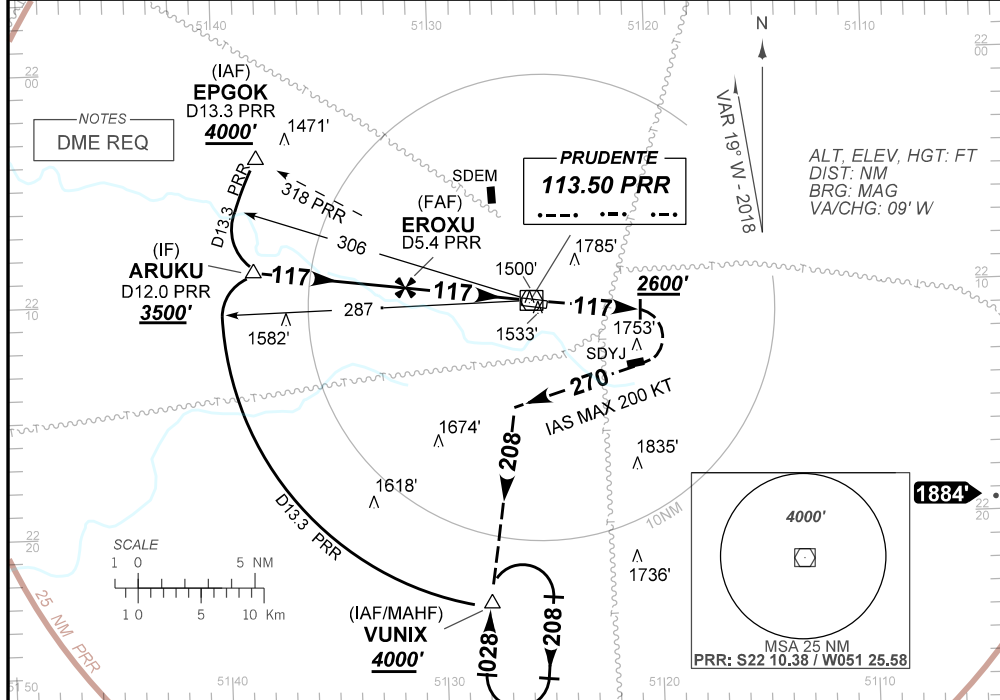
AD ELEV: 1483'

VOR Z RWY 12

ATIS NIL	APP PRUDENTE 125.45	TWR PRUDENTE 118.45	AFIS PRUDENTE 125.45
VOR PRR 113.50 MHz	FINAL CRS 117°	FAF: 3190'	VOR MDA / (OCH): 1770' / (360')

APCH Perdida: 1)Subir para **4000'**. Após **2600'** curvar a DIREITA proa **270°** para interceptar a RDL 208 PRR para espera VUNIX. 2) IAS MAX 200KT até interceptar a RDL 208 PRR.
Missed APCH: 1)Climb to **4000'**. After **2600'** turn RIGHT heading **270°** to intercept 208 RDL PRR for holding at VUNIX. 2) IAS MAX 200KT until intercept 208 RDL PRR.

RMK: NIL



TO THR 12 (NM)	11.6	5.0	1.0	0.0
TO PRR (DME)	12.0	5.4	1.4	0.4

EROXU	4.0	3.0	2.0	1.0	RWY 12
3190	2735	2417	2098	1770	ALT
1779	1323	1005	686	360	(HGT)

KT	090	110	130	150	170	190
FPM	500	600	700	800	900	N/A
FAF-MAPT	NA					

STRAIGHT-IN	CAT	A	B	C	D	E
VOR	MDA / (OCH)	1770' (360')				
	ALS/NO ALS/RVR ALS (m)	NIL / 1600 / NIL				
CIRCLING	MDA / (OCH)	NA				
	VIS (m)					

CHANGES:PROC. LAYOUT. MNM OPR. IDENT.