

**INSTRUMENT APPROACH
CHART (IAC)**

SÃO GABRIEL DA CACHOEIRA / São Gabriel da Cachoeira (SBUA)

RNAV (GNSS) RWY 23

AD ELEV: 251'

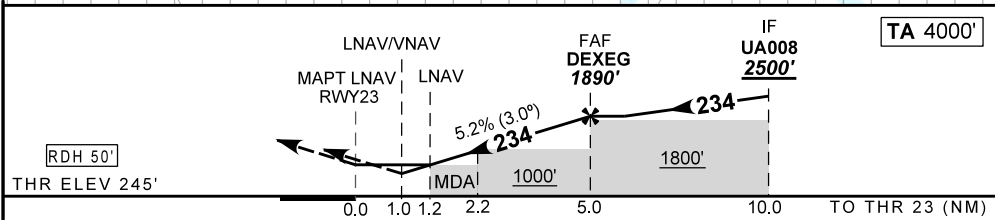
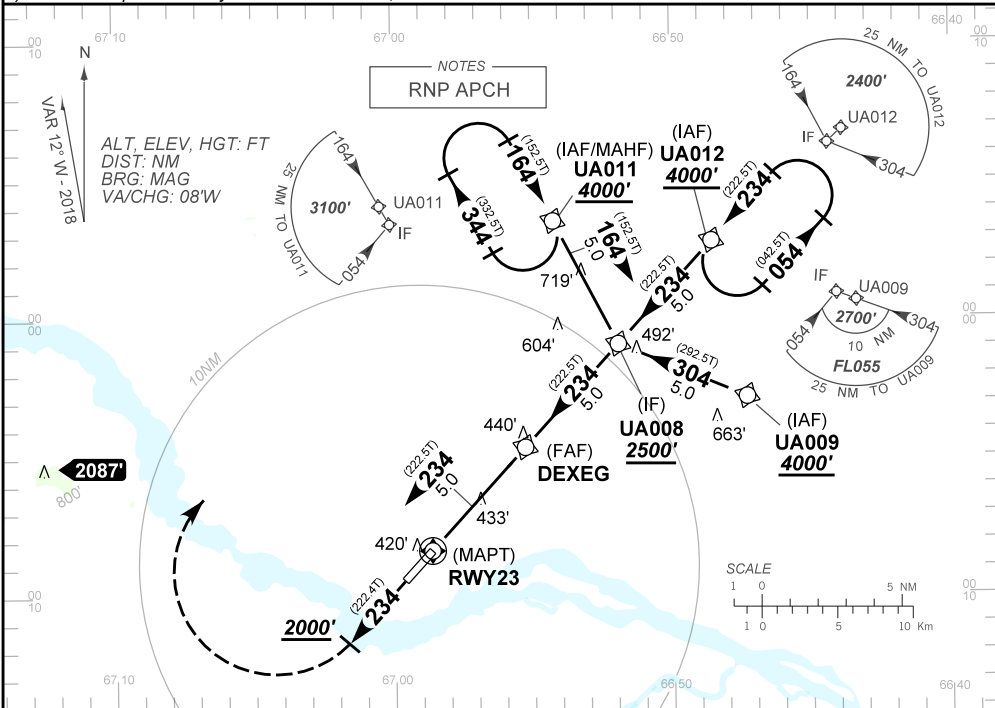
ATIS NIL	APP NIL	AFIS GABRIEL 125.70		GNDC NIL
N/A	FINAL CRS 234°	FAF 1890'	LNAV/VNAV DA / (OCH): 613' / (370')	LNAV MDA / (OCH): 680' / (440')

APCH Perdida: Subir para **4000'** Manter rumo **234** até cruzar **2000'**. Curvar à DIREITA direto UA011 para espera.

Missed APCH: Climb to **4000'** Maintain course **234** until passing **2000'**. Turn RIGHT direct to UA011 for holding.

RMK: 1) Para sistemas não compensados Baro-VNAV, LNAV/VNAV NAO AUTORIZADO abaixo de 0°C ou acima de 50°C.

1) For uncompensated systems Baro-VNAV, LNAV/VNAV NOT AUTHORIZED below 0°C or above 50°C.



RWY23	1.2	2.2	3.0	4.0	DEXEG		KT	090	110	130	150	170	190
ALT	680	1000	1251	1570	1890		FPM	500	600	700	800	900	1000
(HGT)	434	754	1005	1324	1644		FAF-MAPT			NA			

STRAIGHT-IN	CAT	A	B	C	D	E
LNAV/VNAV	DA / (OCH)	613' / (370')				NA
	ALS/NO ALS/ RVR ALS (m)	NIL / 1700 / NIL				
LNAV	MDA / (OCH)	680' / (440')				
	ALS/NO ALS/RVR ALS (m)	NIL / 1700 / NIL			NIL / 2000 / NIL	
CIRCLING	MDA / (OCH)	NA				
	VIS (m)					

CHANGES: FAF, ID.