

**INSTRUMENT APPROACH  
CHART (IAC)**

**FORTALEZA / Pinto Martins, INTL (SBFZ)**

**AD ELEV: 82'**

**RNAV(GNSS) RWY 12**

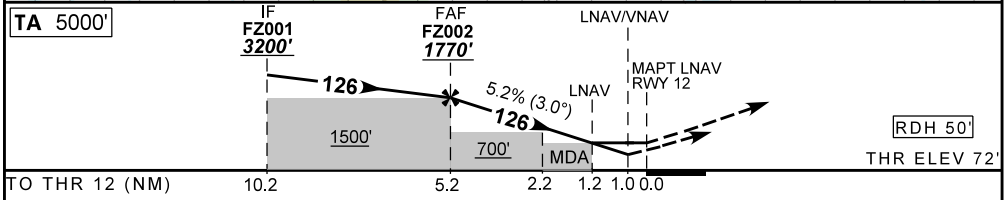
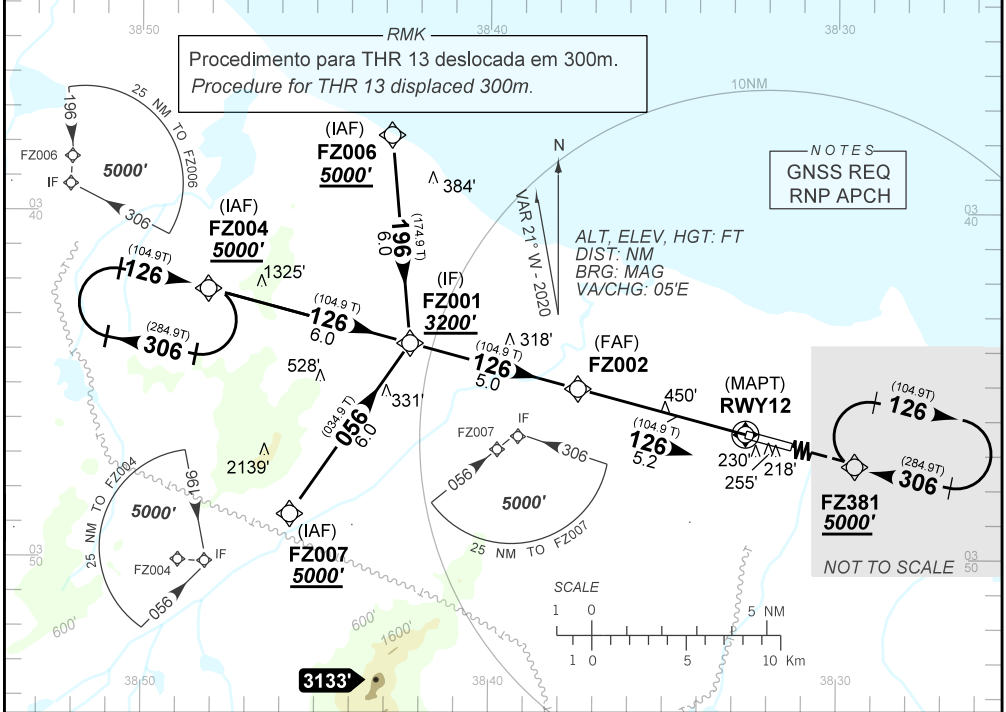
D-ATIS <b>127.70</b>	APP FORTALEZA <b>120.50 133.00 134.55 121.50</b>	TWR FORTALEZA <b>129.00 121.50</b>	GNDC FORTALEZA <b>121.95</b>
N/A	FINAL CRS <b>126°</b>	FAF <b>1770'</b>	MDA / (OCH): <b>510' / (440')</b>
		DA / (OCH): <b>434' / (362')</b>	MDA / (OCH): <b>510' / (440')</b>

APCH Perdida: Subir para **5000'** no rumo **126** para espera em FZ381.

Missed APCH: Climb to **5000'** on course **126** for holding at FZ381.

RMK: 1) Para sistemas não compensados Baro-VNAV, LNAV/VNAV NAO AUTORIZADO abaixo de -10°C ou acima de 50°C.

1) For uncompensated systems Baro-VNAV, LNAV/VNAV NOT AUTHORIZED below -10°C or above 50°C.



	<b>FZ002</b>	<b>4.0</b>	<b>3.0</b>	<b>2.0</b>	<b>1.2</b>	<b>RWY12</b>		<b>KT</b>	<b>090</b>	<b>110</b>	<b>130</b>	<b>150</b>	<b>170</b>	<b>190</b>
	<b>1770</b>	<b>1400</b>	<b>1085</b>	<b>770</b>	<b>510</b>	<b>ALT</b>		<b>FPM</b>	<b>500</b>	<b>600</b>	<b>700</b>	<b>800</b>	<b>900</b>	<b>1000</b>
	<b>1698</b>	<b>1328</b>	<b>1013</b>	<b>698</b>	<b>438</b>	<b>(HGT)</b>		<b>FAF-MAPT</b>	<b>NA</b>					

STRAIGHT-IN	<b>CAT</b>	<b>A</b>	<b>B</b>	<b>C</b>	<b>D</b>	<b>E</b>
	DA / (OCH)	<b>434' / (362')</b>				<b>NA</b>
	ALS/NO ALS/ RVR ALS (m)	<b>NIL / 1600 / NIL</b>				<b>NIL / 1700 / NIL</b>
LNAV	MDA / (OCH)	<b>510' / (440')</b>				
	ALS/NO ALS/ RVR ALS (m)	<b>NIL / 1600 / NIL</b>				<b>NIL / 2000 / NIL</b>
CIRCLING	MDA / (OCH)	<b>NA</b>				
	VIS (m)	<b>NA</b>				

CHANGES: NEW CHART