

**INSTRUMENT APPROACH
CHART (IAC)**

CAMPINAS / Viracopos, INTL (SBKP)

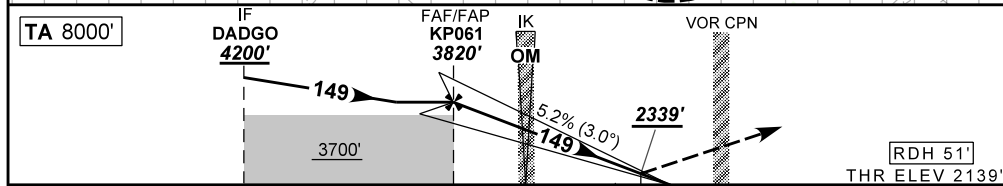
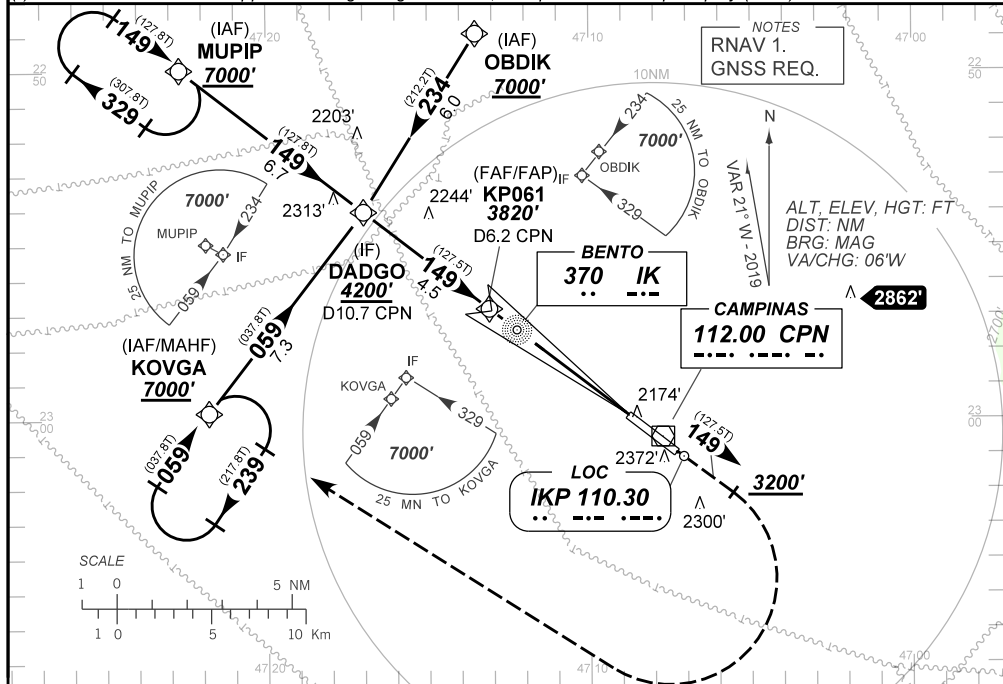
AD ELEV: 2170'

ILS W RWY 15

ATIS 127.825	APP SÃO PAULO 132.10 120.25 119.80 119.25 129.75 121.50	TWR CAMPINAS 118.25 121.50	GNDC CAMPINAS 121.90
LOC IKP 110.30 MHz	FINAL CRS 149°	FAF/FAP 3820'	CAT I DA / (OCH): 2339' / (200')
			N/A

APCH Perdida: 1) Subir para **7000'**, gradiente MNM 5% até **3200'**. Manter rumo **149°** até **3200'**. Após, curvar à DIREITA direto KOVGA para espera. 2) IAS MAX 220KT.
Missed APCH: 1) Climb to **7000'**, MNM gradient 5% up to **3200'**. Maintain course **149°** until **3200'**. Then, turn RIGHT direct to KOVGA for holding. 2) MAX IAS 220KT.

RMK: (*) VIS RVR ALS 550m para aproximação utilizando Diretor de Voo, Piloto Automático ou Head-Up Display (HUD).
(*) RVR VIS ALS 550m for approach using a Flight Director, Autopilot or Head-Up Display (HUD).



TO THR 15 (NM)	9.5	5.0	4.0	0.5	0.0
TO CPN (DME)	10.7	6.2	5.2	1.7	1.2

NIL	RWY15	KT	090	110	130	150	170	190
NIL	ALT	FPM	500	600	700	800	900	NA
NIL	(HGT)	FAF-MAPT	NA					

STRAIGHT-IN	CAT	A	B	C	D	E	
CAT I	DA / (OCH)	2339' / (200')					N/A
	ALS/NO ALS/ RVR ALS (m)	800 / 1200 / 700					
CIRCLING	MDA / (OCH)	NA					
	VIS (m)	NA					

CHANGES: FREQ, IDENT, LAYOUT, PROC.