

STANDARD ARRIVAL CHART
INSTRUMENT (STAR)

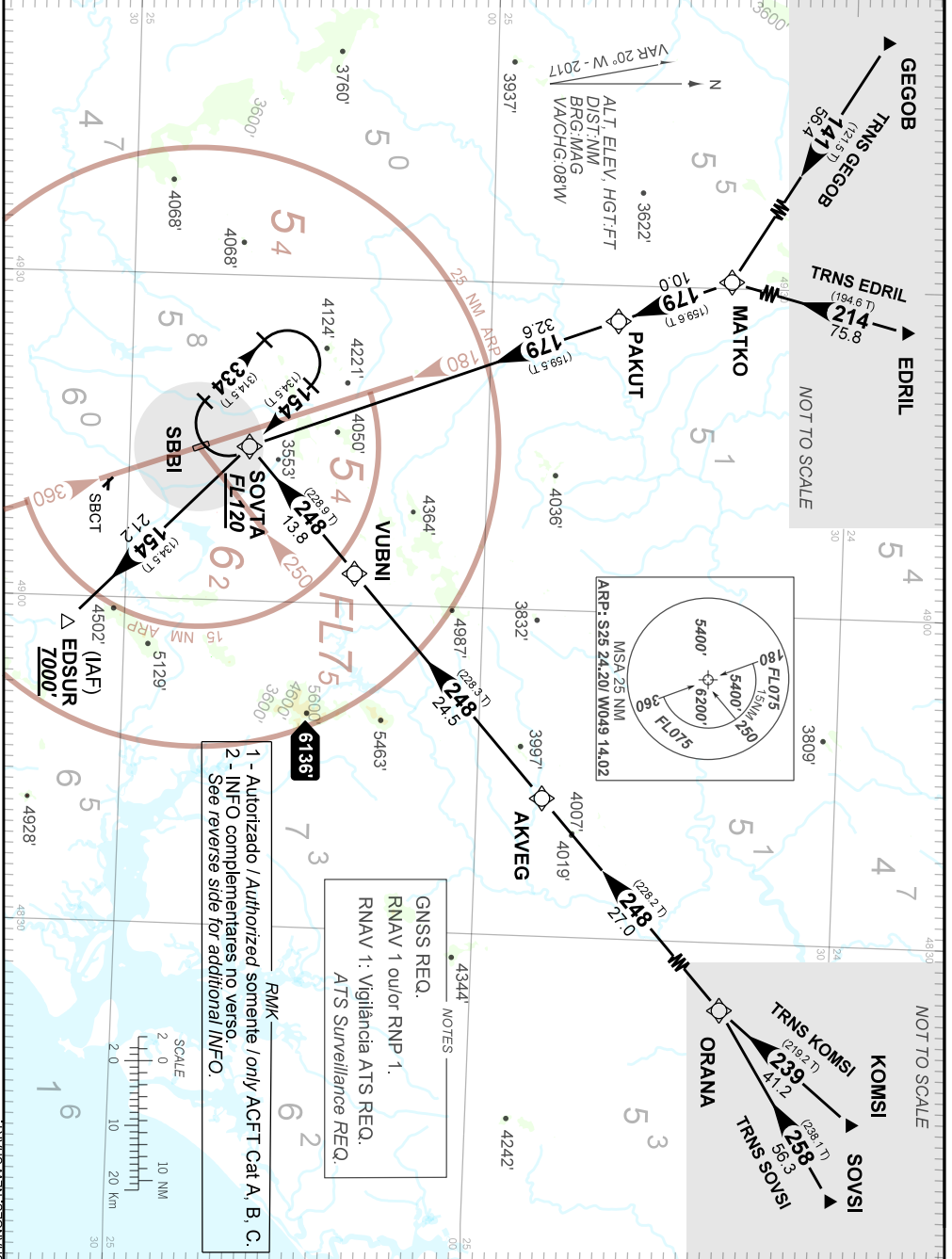
CURITIBA / Baccheri (SBBI)

RWY 36

RNAV SOVTA 1A

AD ELEV: 3059'

TA 7000'	ATIS 132.325	ACC CURITIBA 126.95 128.25 125.80 127.00 132.80 126.50 121.50	APP CURITIBA 119.95 120.65 120.95 129.55 133.15 121.50	TWR BACCHERI 118.90
----------	-----------------	---	--	------------------------



1 - Autorizado / Authorized somente / only ACFT Cat. A, B, C.
2 - INFO complementares no verso.
See reverse side for additional INFO.

NOTES
GNSSE REQ.
RNAV 1 ou/ou RNP 1.
RNAV 1: Vigilancia ATIS REQ.
ATIS Surveillance REQ.

RMK 6136



CHANGES: NEW CHART

FALHA DE COMUNICAÇÃO
COMMUNICATION FAILURE

Acionar transponder A7600, completar chegada until EDSUR e executar procedimento em uso pelo ATC.
Set transponder A7600, complete arrival until EDSUR and perform procedure in use by ATC.

CHANGES: NEW CHART.