

INSTRUMENT APPROACH  
CHART (IAC)

PONTA PORÃ / Ponta Porã, INTL (SBPP)

AD ELEV: 2156'

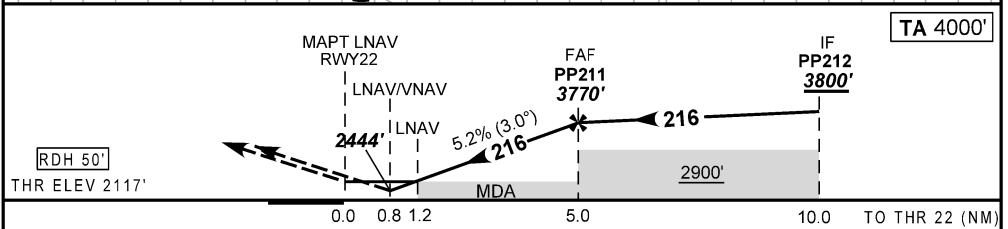
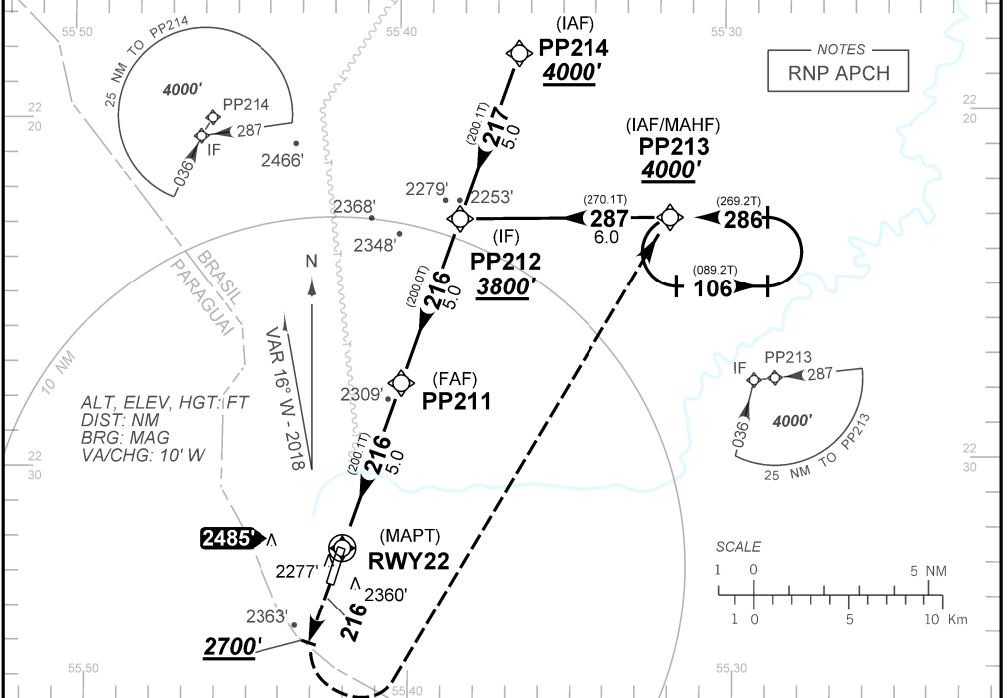
RNAV (GNSS) RWY 22

ATIS NIL	APP NIL	AFIS PONTA PORÃ 125.90	GNDC NIL
N/A	FINAL CRS 216°	FAF 3770'	LNNAV MDA / (OCH): 2560' / (440')

APCH Perdida: Subir para **4000'**. Manter rumo **216** até cruzar **2700'**. Curvar à ESQUERDA direto PP213 para espera  
Missed APCH: Climb to **4000'**. Maintain course **216** until passing **2700'**. Turn LEFT direct to PP213 for holding.

RMK: Para sistemas não compensados Baro-VNAV, LNAV/VNAV NÃO AUTORIZADO abaixo de -10°C ou acima de 53°C.

For uncompensated systems Baro-VNAV, LNAV/VNAV NOT AUTHORIZED below -10°C or above 53°C.



RWY22	1.2	2.2	3.0	4.0	PP211					
ALT	2556	2810	3129	3447	3770					
(HGT)	439	693	1012	1330	1653					

STRAIGHT-IN	CAT	A	B	C	D	E
	DA / (OCH)	2444' / (330')				
LNNAV/VNAV	ALS/NO ALS/ RVR ALS (m)	NIL / 1500 / NIL				
	MDA / (OCH)	2560' / (450')				
LNNAV	ALS/NO ALS/ RVR ALS (m)	NIL / 1600 / NIL		NIL / 2000 / NIL		
	MDA / (OCH)	NA				
CIRCLING	VIS (m)	NA				

CHANGES: TAA