

**INSTRUMENT APPROACH  
CHART (IAC)**

**PORTO ALEGRE / Salgado Filho, INTL (SBPA)**

**AD ELEV: 12'**

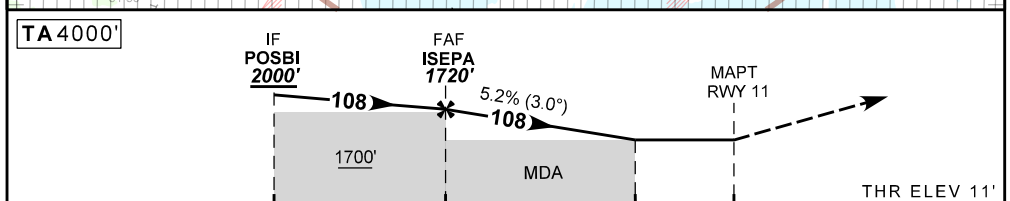
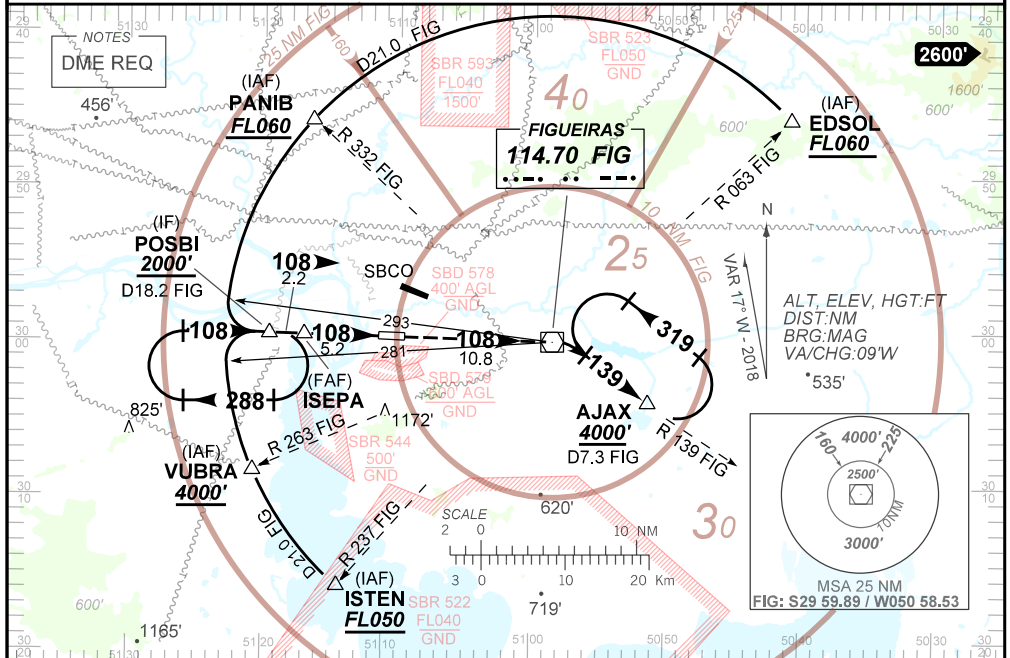
**VOR Z RWY 11**

D-ATIS <b>132.35</b>	APP PORTO ALEGRE <b>119.00 120.10 120.55 128.90 121.50</b>	TWR PORTO ALEGRE <b>118.10 121.50</b>	GNDC PORTO ALEGRE <b>121.90 121.50</b>
-------------------------	---	--	---

VOR FIG <b>114.70 MHz</b>	FINAL CRS <b>108°</b>	FAF: <b>1720'</b>	N/A	VOR MDA / (OCH): <b>620' (610')</b>
------------------------------	--------------------------	----------------------	-----	--

APCH Perdida: 1) Subir para **4000'**, manter rumo **108** até VOR FIG. Após curvar à DIREITA, RDL **139** FIG para espera em AJAX.  
Missed APCH: 1) Climb to **4000'**, maintain course **108** until FIG VOR. Turn RIGHT, **139** FIG RDL for holding at AJAX.

**RMK: NIL.**



TO THR 11 (NM)	7.4	5.2	1.7	0.0
TO FIG (DME)	18.2	16.0	12.5	10.8

	ISEPA	4.0	3.0	2.0	1.7	RWY11					
	1720	1335	1017	698	620	ALT					
	1709	1324	1006	687	610	(HGT)					

STRAIGHT-IN	CAT	A	B	C	D	E
	MDA / (OCH)	620' / (610')				
VOR	ALS/NO ALS/ RVR ALS (m)	NIL / 1600 / NIL		NIL / 2800 / NIL		
CIRCLING	MDA / (OCH)	NA				
	VIS (m)					

CHANGES: LAYOUT.