

**INSTRUMENT APPROACH
CHART (IAC)**

ANÁPOLIS / Base Aérea, MIL (SBAN)

AD ELEV: 3732'

VOR X RWY 24R

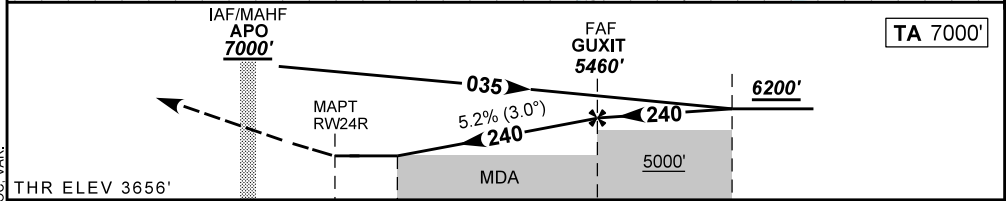
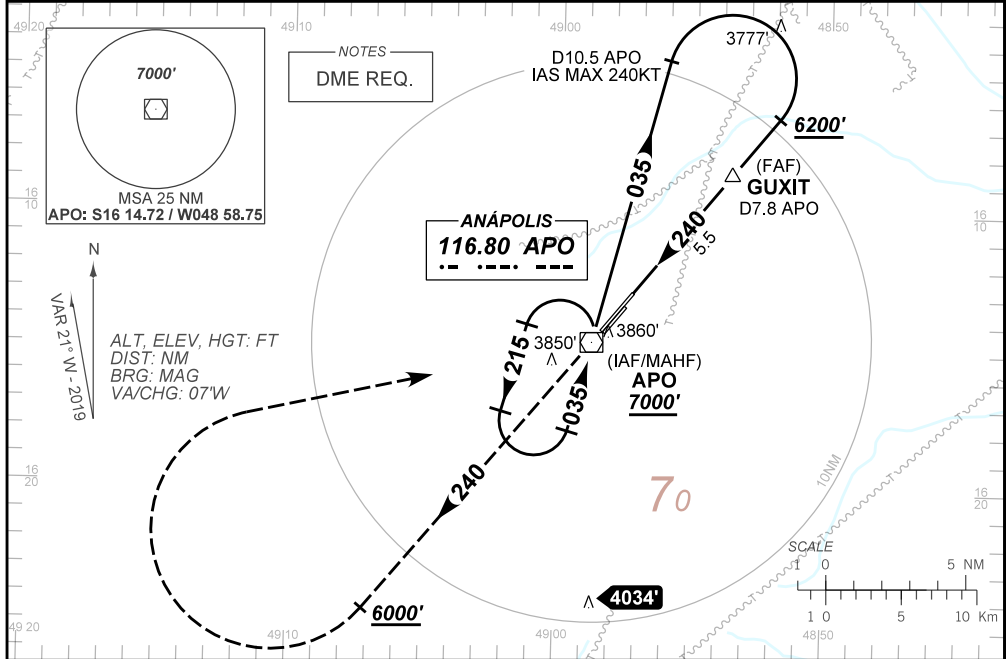
ATIS NIL	APP ANÁPOLIS 119.15 120.55 129.45 133.00 121.50	TWR ANÁPOLIS 118.30 121.25 121.50	GNDC ANÁPOLIS 121.90
--------------------	---	---	--------------------------------

VOR APO 116.80 MHz	FINAL CRS 240°	FAF: 5460'	N/A	VOR MDA / (OCH): 4110' / (460')
------------------------------	--------------------------	----------------------	------------	---

APCH Perdida: Subir para **7000'**. Manter a RDL **240** do VOR APO até **6000'**. Curvar à DIREITA direto VOR APO para espera.

Missed APCH: Climb to **7000'**. Maintain **240** RDL APO VOR up to **6000'**. Turn RIGHT direct APO VOR for holding.

RMK: NIL.



	0.0	1.3		5.5	8.2	TO THR 24R (NM)
	2.3	3.6		7.8	10.5	TO APO (DME)

RWY24R	1.3	2.0	3.0	4.0	5.0	GUXIT	KT	090	110	130	150	170	190
ALT	4110	4343	4661	4980	5298	5460	FPM	500	600	700	800	900	1000
(HGT)	460	687	1005	1324	1642	1804	FAF-MAPT	NA					

STRAIGHT-IN	CAT	A	B	C	D	E
	MDA / (OCH)	4110' / (460')				
VOR	ALS/NO ALS/ RVR ALS (m)	NIL / 1600 / NIL		NIL / 2100 / NIL		
CIRCLING	MDA / (OCH)	NA				
	VIS (m)					

CHANGES: ADEL, IDENT, LAYOUT, MDA, MSA, PROC, VAR.