

**INSTRUMENT APPROACH
CHART (IAC)**

ANGRA DOS REIS / Angra dos Reis (SDAG)

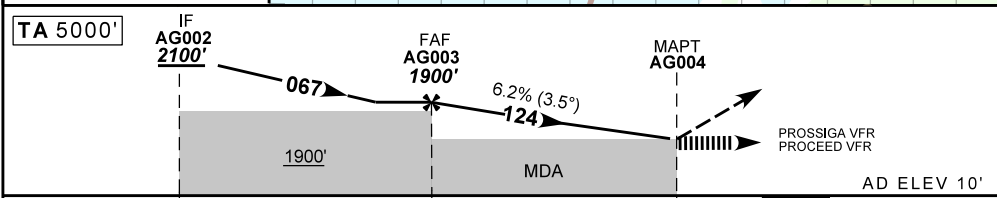
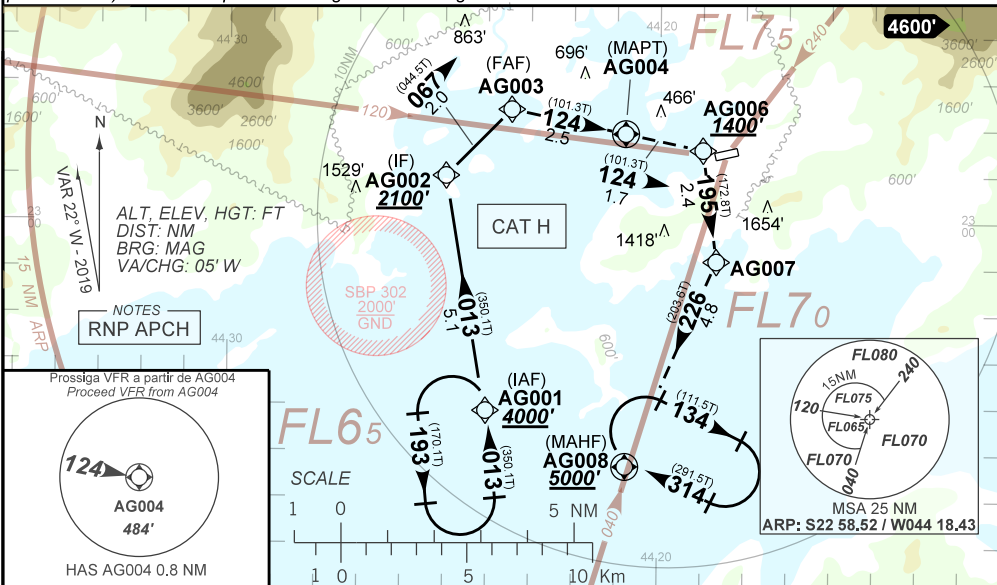
AD ELEV: 10'

RNAV(GNSS) 124

D-ATIS	119.00 119.35 120.55 126.20 128.90 129.20 129.80 133.30 121.50				APP RIO	FCA	GNDC
N/A	FINAL CRS 124°	FAF: 1900'	N/A	LNAV MDA / (OCH): 950' / (940')			

APCH Perdida: Subir para **5000'**. Gradiente MNM de 7.5% até **3000'**. Manter o rumo **124** até AG006. Após, curvar à DIREITA direto AG007. Curvar à DIREITA direto AG008 para espera. IAS MAX 70KT até AG007.
 Missed APCH: Climb to **5000'**, MNM gradient 7.5% until **3000'**. Maintain course **124** until AG006. After, turn RIGHT direct AG007. After, turn RIGHT to AG008 for holding. IAS MAX 70KT until AG007.

RMK: 1) Contato obrigatório na FCA. Proibido iniciar aproximação enquanto houver outro tráfego executando procedimento de decolagem 2) Requerido FPL "Y" com mudança de regras em AG004.
 1) Aircraft must contact FCA. Prohibited start approaching while there is another traffic executing departure procedure 2) FPL "Y" required with flight rules change at AG004.



	AG003	4.0	3.0	2.0	RWY10	KT	060	070	080	090
	1900	1710	1320	950	ALT	FPM	390	460	520	590
	1890	1700	1310	940	(HGT)	FAF-MAPT	NA			

STRAIGHT-IN	CAT	H
LNAV	MDA / (OCH)	950' / (940')
	VIS (m)	1500
CIRCLING	MDA / (OCH)	NA
	VIS (m)	

CHANGES: NEW CHART.