

**INSTRUMENT APPROACH  
CHART (IAC)**

**NAVEGANTES / Ministro Victor Konder, INTL (SBNF)**

**RNAV(GNSS) RWY25**

**AD ELEV: 18'**

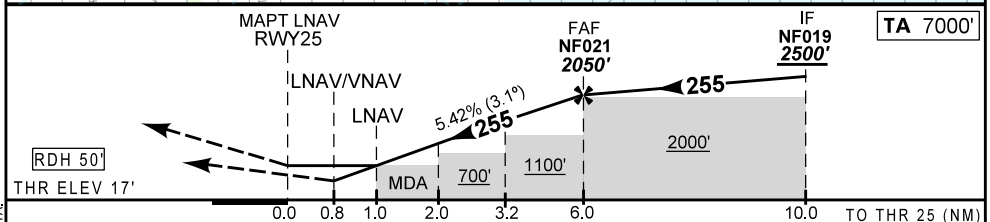
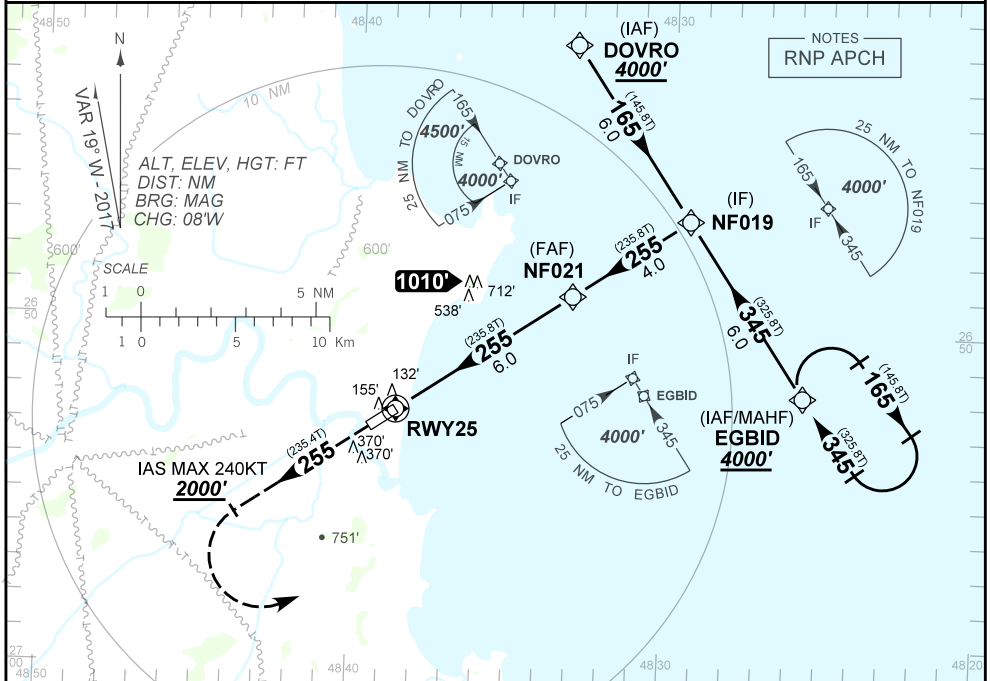
|                        |   |                                 |   |
|------------------------|---|---------------------------------|---|
| ATIS<br><b>127.625</b> | APP FLORIANÓPOLIS<br><b>119.50 119.65 128.95<br/>129.45 129.60 121.50</b> | TWR NAVEGANTES<br><b>118.20</b> | GND C NAVEGANTES<br><b>NIL</b>                |
| <b>N/A</b>             | FINAL CRS<br><b>255°</b>  | FAF:<br><b>2050'</b>            | LNAV/VNAV<br>DA / (OCH): <b>322' / (310')</b> |
|                        |   |                                 | LNAV:<br>MDA / (OCH): <b>400' (390')</b>      |

APCH Perdida: subir para **4000'** no rumo 255. Após passar **2000'**, curvar à ESQUERDA direto para EGBID para espera.

*Missed APCH: climb to **4000'** on course 255. After passing **2000'**, turn LEFT direct to EGBID for holding.*

RMK: Para sistemas não compensados, LNAV/VNAV NÃO AUTORIZADO abaixo de -10°C ou acima de 44°C.

*For uncompensated systems, LNAV/VNAV procedure NOT AUTHORIZED below -10°C or above 44°C.*



|       |     |     |     |      |      |       |          |     |     |     |     |     |     |
|-------|-----|-----|-----|------|------|-------|----------|-----|-----|-----|-----|-----|-----|
| RWY25 | 0.8 | 1.0 | 2.0 | 3.0  | 4.0  | NF021 | KT       | 090 | 110 | 130 | 150 | 170 | 190 |
| ALT   | 322 | 397 | 726 | 1055 | 1384 | 2050  | FPM      | 500 | 600 | 700 | 800 | 900 | NA  |
| (HGT) | 305 | 380 | 709 | 1038 | 1367 | 2033  | FAF-MAPT | NIL |     |     |     |     |     |

|             |                         |                      |   |                   |   |    |
|-------------|-------------------------|----------------------|---|-------------------|---|----|
| STRAIGHT-IN | CAT                     | A                    | B | C                 | D | E  |
| LNAV/VNAV   | DA / OCH / TETO         | 322' / (310') / 400' |   |                   |   | NA |
|             | ALS/NO ALS/ RVR ALS (m) | NIL / 1400' / NIL    |   |                   |   |    |
| LNAV        | MDA / OCH / TETO        | 400' / (390') / 400' |   |                   |   |    |
|             | ALS/NO ALS/ RVR ALS (m) | NIL / 1600' / NIL    |   | NIL / 1800' / NIL |   |    |
| CIRCLING    | MDA / OCH / TETO        | NA                   |   |                   |   |    |
|             | VIS (m)                 | NA                   |   |                   |   |    |

CHANGES: DEC/VAR, PROC, LAYOUT, RMK, TA.